

MAGNUM

3000 lb.

Boat House

INSTALLATION INSTRUCTIONS

**Boat Lifts Unlimited
Odenton, Maryland
410-674-3100**

Prior to installation:

- a). To insure that the lift will operate properly, adequate electricity should be available. Electricity will also be needed to install the lift.
- b). If existing ceiling joist are to be used, insure they are not cracked or show any signs of decay.
- c) We recommend that the ceiling joist be doubled-up 2 x 8 or 2 x 10 timbers.
- d). obtain any locally required permits.

DO NOT USE ANY POWER TOOLS WHILE STANDING IN THE WATER. IF ELECTRICITY MUST BE USED NEAR THE WATER, INSURE THAT THE CIRCUIT IS PROTECTED BY A GROUND FAULT INTERRUPTER.

- 1) Assemble the bearing carriers (5), bearings (7) and bearing flanges (6) Using the 1/2 x 1" galvanized carriage bolts (21) and nuts (24). The bearing carriers should be mounted through the center of the boathouse with the motor anchor bracket at one end. Insert the 1 1/2 inch schedule 40 pipe (not supplied) through the bearings. Be sure to install the bearing locks over the pipe. The locks keep the pipe from walking. (Figure 002, 008)

IMPORTANT

A GOOD HEAVY GREASE MUST BE APPLIED TO THE GEAR UNIT PRIOR TO LIFTING A BOAT. THE GREASE THAT COMES ON THE GEARS FOR SHIPMENT, IS NOT ENOUGH TO INSURE PROPER LUBRICATION. IT IS BEST TO APPLY THE GREASE WHILE THE UNITS ARE RUNNING. UPON LIFTING THE BOAT, IF ANY GRINDING OR FINE POWDER IS OBSERVED COMING FROM THE WORM GEAR, REAPPLY THE GREASE. AFTER THE GEARS HAVE SEATED, ONLY ANNUAL LUBRICATION IS REQUIRED.

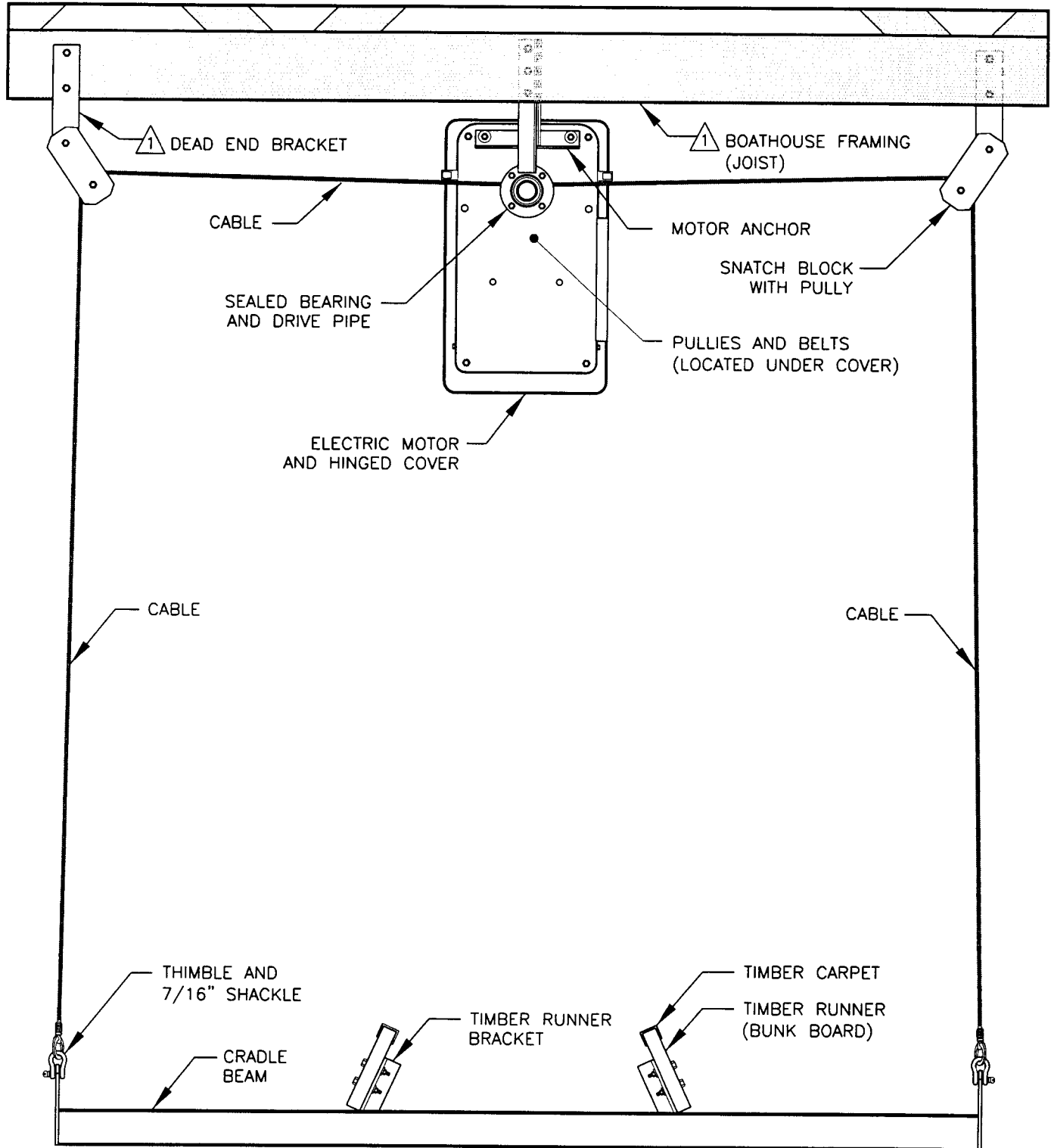
- 2). Install the motor (1) onto the gear plate(2). Install the back cover (3) onto the gear plate as well as the pulley (9) and the belt (10). Install the gear assembly onto the end of the pipe with the spacer sleeve (8) and attach to the motor anchor bracket. Attach the front cover onto the back cover. (Figure 003, 004)
- 3). Assemble the snatch blocks(13) and sheaves (11) and attach them to four dead end brackets (14). Attach the brackets to the to the joist. They should each be spaced 4'6" away from the drive pipe. (Figure 002, 006).
- 4). Position the lift beams (16) across the slip. Drill 2 holes 7/16 " diameter in the drive pipe between the bearing flanges, close to the bearings. (figure 008). Insert the cables (15) into the holes and install the clamps (27). Route the cables through the system and secure them to the lift beams. Wrap the cables onto the pipe. (figure 009a).
- 5). Install the bunks and fit the boat. Figure 010, 011

**"BOATHOUSE" MODEL LIFT: 3,000 LB
PARTS LIST**

NO.	ITEM DESCRIPTION	QTY
1	3/4 HP MOTOR WITH LONG CORD 15' AND BOXED SWITCH	1
2	GEAR PLATE	1
3	HINGED COVER	1
4	OVERHEAD MOTOR ANCHOR BRACKET	1
5	BEARING CARRIERS	4
6	BEARING FLANGES	4
7	SA 210 BEARINGS WITH BEARING LOCKS	4
8	SPACER SLEEVE	1
9	10" PULLEY	1
10	4L360 BELT	1
11	1/2" BORE PLAIN SHEAVES	4
12	7/16" SHACKLES	4
13	SNATCH BLOCKS	4
14	DEAD END BRACKETS	4
15	1/4" x 20' CABLES WITH NICO AND THIMBLE	4
16	4" CRADLE BEAMS (CRADLE LIFT ONLY)	2
17	ROLLS 14' CARPET (CRADLE LIFT ONLY)	2
18	3/8" x 2 1/2" GALVANIZED CARRAIGE BOLTS (CRADLE LIFT ONLY)	8
19	3/8" GALVANIZED NUTS (CRADLE LIFT ONLY)	8
20	14' WEIGHTED SLINGS (SLING LIFT ONLY-NOT SHOWN)	2
HARDWARE		
21	1/2" x 1" GALVANIZED CARRAIGE BOLTS	16
22	1/2" x 1 1/2" GALVANIZED BOLTS	2
23	1/2" x 2" GALVANIZED BOLTS	2
24	1/2" GALVANIZED NUTS	20
25	1/2" GALVANIZED LOCK WASHERS	2
26	1/2" GALVANIZED FLAT WASHERS	10
27	3/16" WIRE CLIPS	4
28	5/8" x 3" GALVANIZED BOLTS	4
29	5/8" x 6" GALVANIZED BOLTS	18
30	5/8" GALVANIZED NUTS	22
31	STAINLESS STEEL HARDWARE COVERPAK	1
32	1/2" x 3" STAINLESS STEEL BOLTS	8
33	1/2" STAINLESS STEEL LOCK NUTS	8
34	5/8" GALVANIZED WASHERS	18

GENERAL NOTES:

⚠ IMPORTANT—JOIST SHOULD BE ADEQUATE TO SUPPORT THE LOAD, WE RECOMMEND 2 x 10' DIMENSIONAL LUMBER. DEAD END BRACKETS SHOULD BE SECURELY ATTACHED TO THE BOATHOUSE FRAMING.

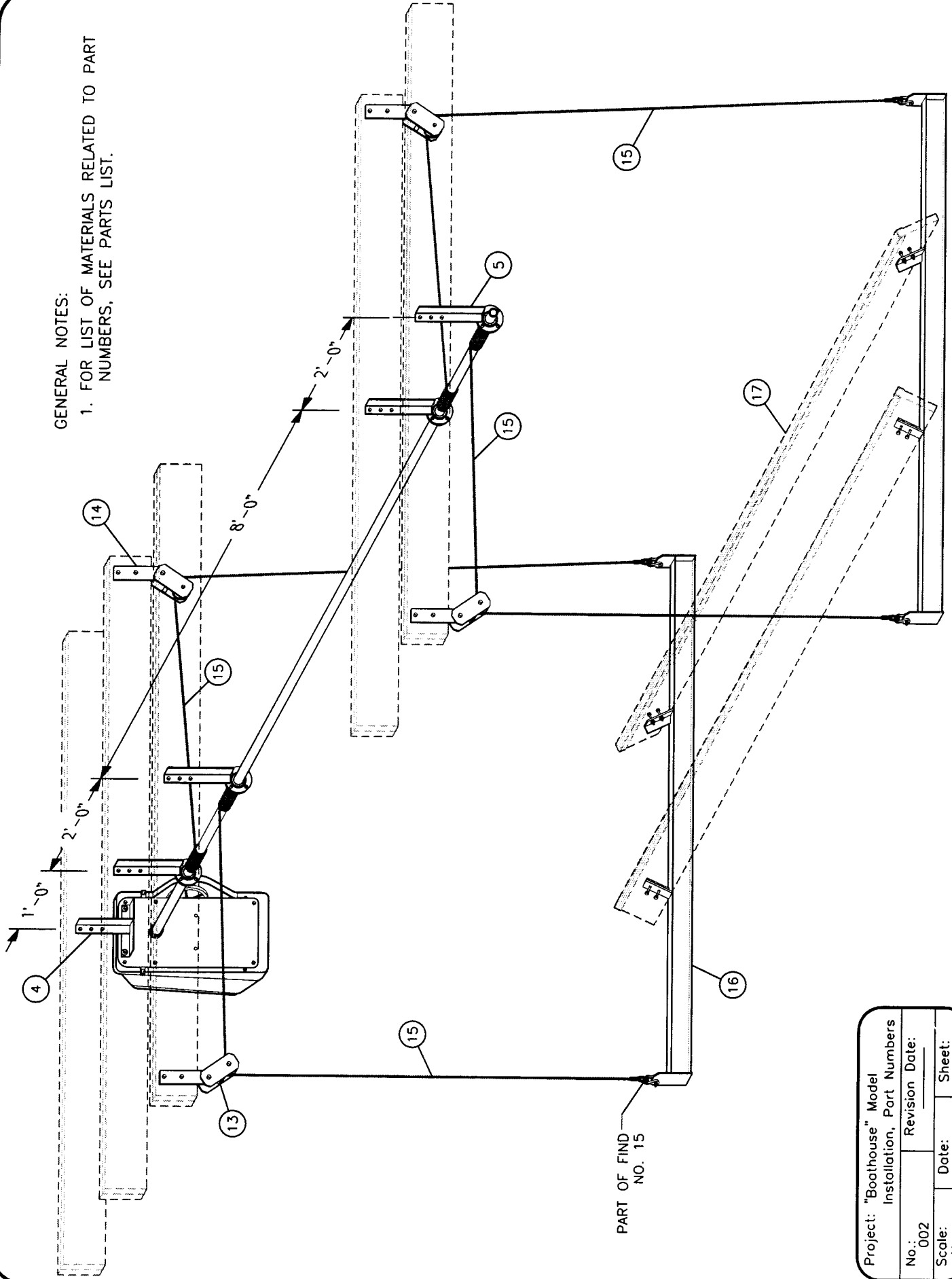


MODEL 3,000 LB LIFT

Project: "Boathouse" Part Names (Model 3,000)		
No.: 001	Revision Date:	
Scale: None	Date: 05-31-01	Sheet: 1 of 1

GENERAL NOTES:

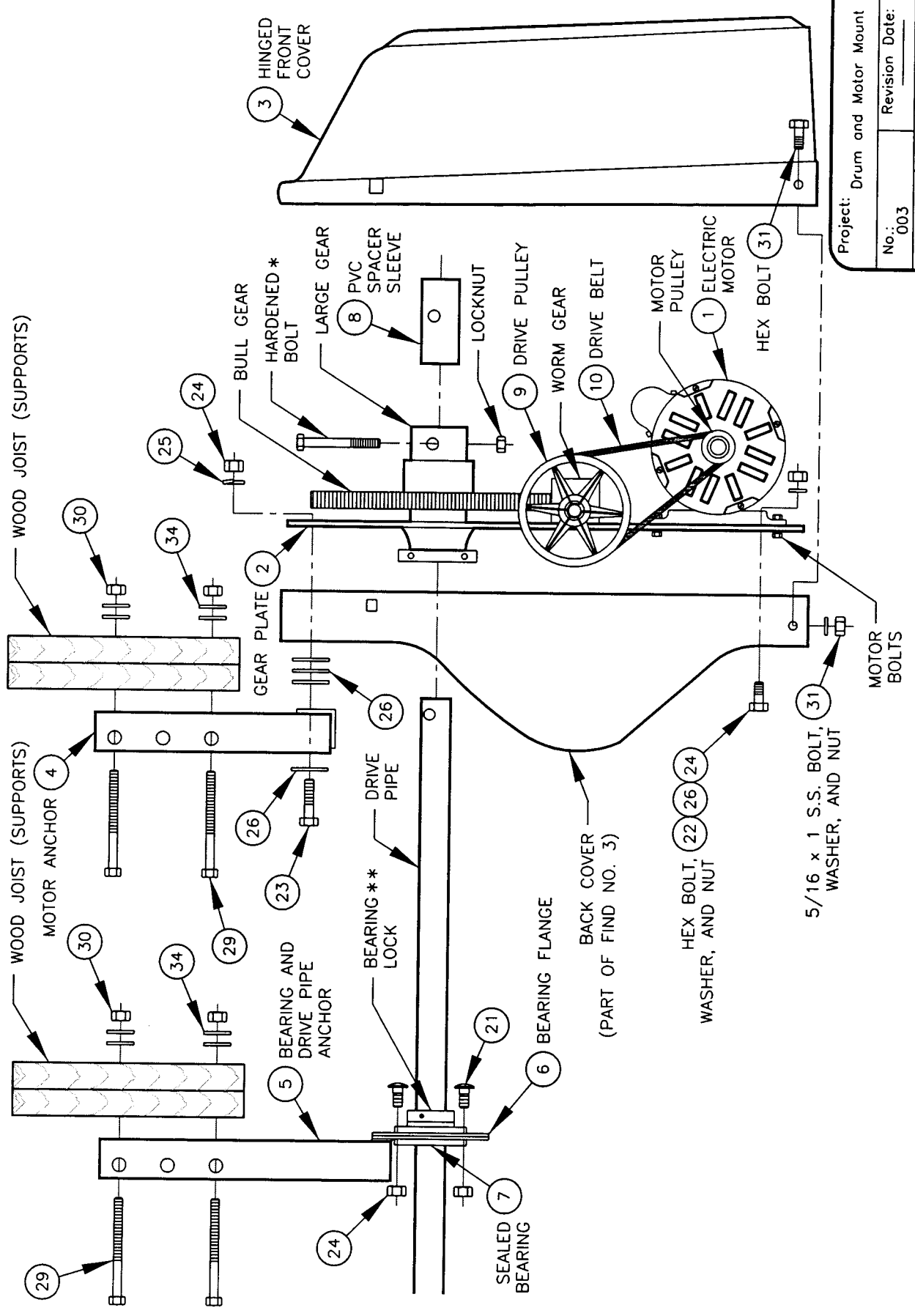
1. FOR LIST OF MATERIALS RELATED TO PART NUMBERS, SEE PARTS LIST.



Project: "Boathouse" Model			
Installation, Part Numbers			
No.:	002	Revision	Date:
Scale:	None	Date:	06-06-01
		Sheet:	1 of 1

GENERAL NOTES:

1. * CAUTION: INSTALL ONLY THE HARDENED BOLT SUPPLIED WITH THE GEAR ASSEMBLY.
2. ** USE BEARING LOCKS ON ALL BEARINGS TO PREVENT THE DRIVE PIPE FROM WALKING.
3. FOR LIST OF MATERIALS RELATED TO PART NUMBERS, SEE PARTS LIST.



Project: Drum and Motor Mount	
No.: 003	Revision Date:
Scale: None	Date: 06-01-01
Sheet: 1 of 1	

5/16 x 1 S.S. BOLT, (22) (26) (24)
WASHER, AND NUT (31)

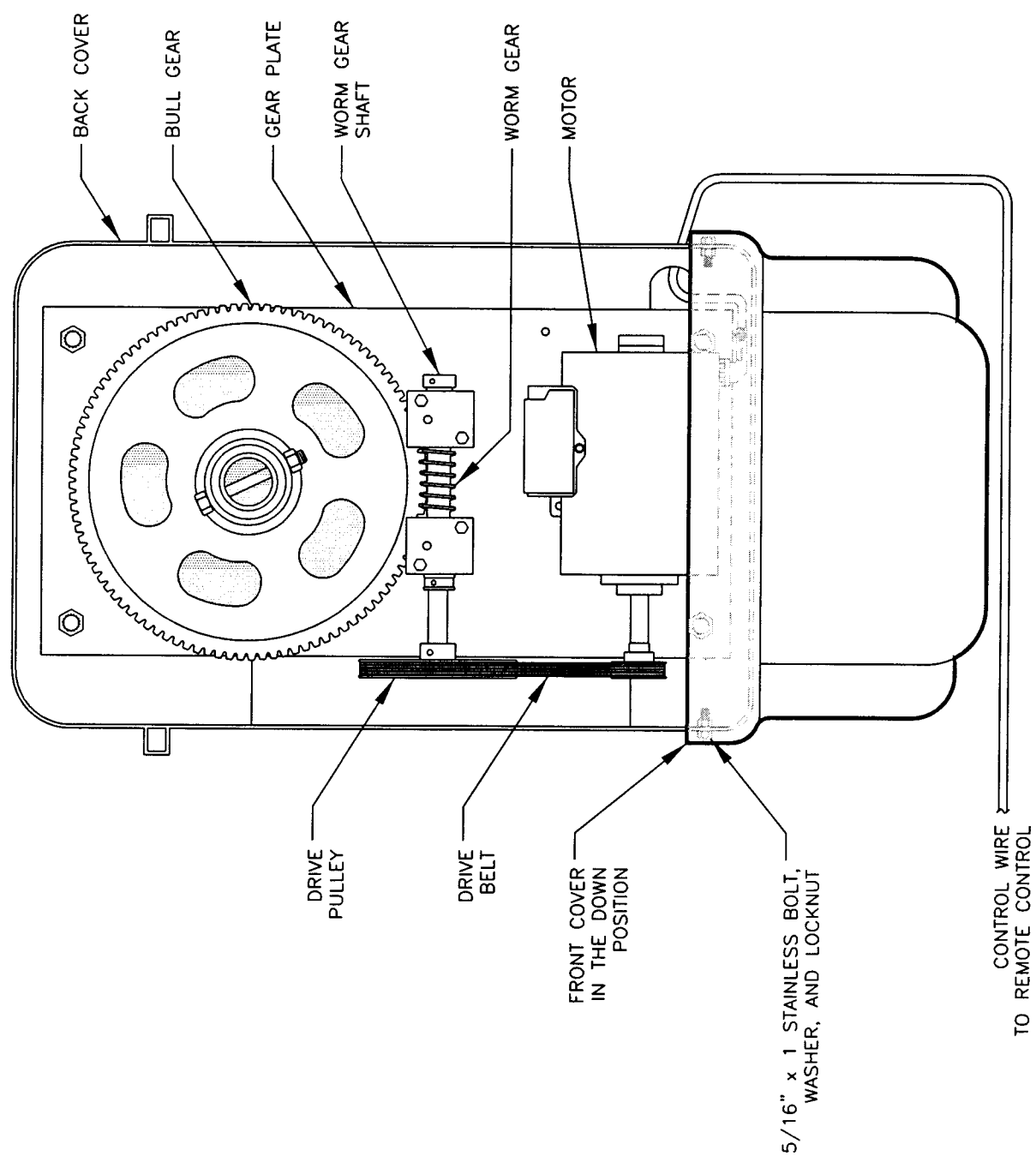
BACK COVER (PART OF FIND NO. 3)

HEX BOLT, (22) (26) (24)
WASHER, AND NUT

MOTOR BOLTS

GENERAL NOTES:

1. SEE DRAWING NO. 003 (DRUM AND MOTOR MOUNT) FOR A SIDE VIEW OF MOTOR AND MOTOR HOUSING.



Project: Motor and Motor Housing	
No.: 004	Revision Date:
Scale: None	Date: 06-01-01
	Sheet: 1 of 1

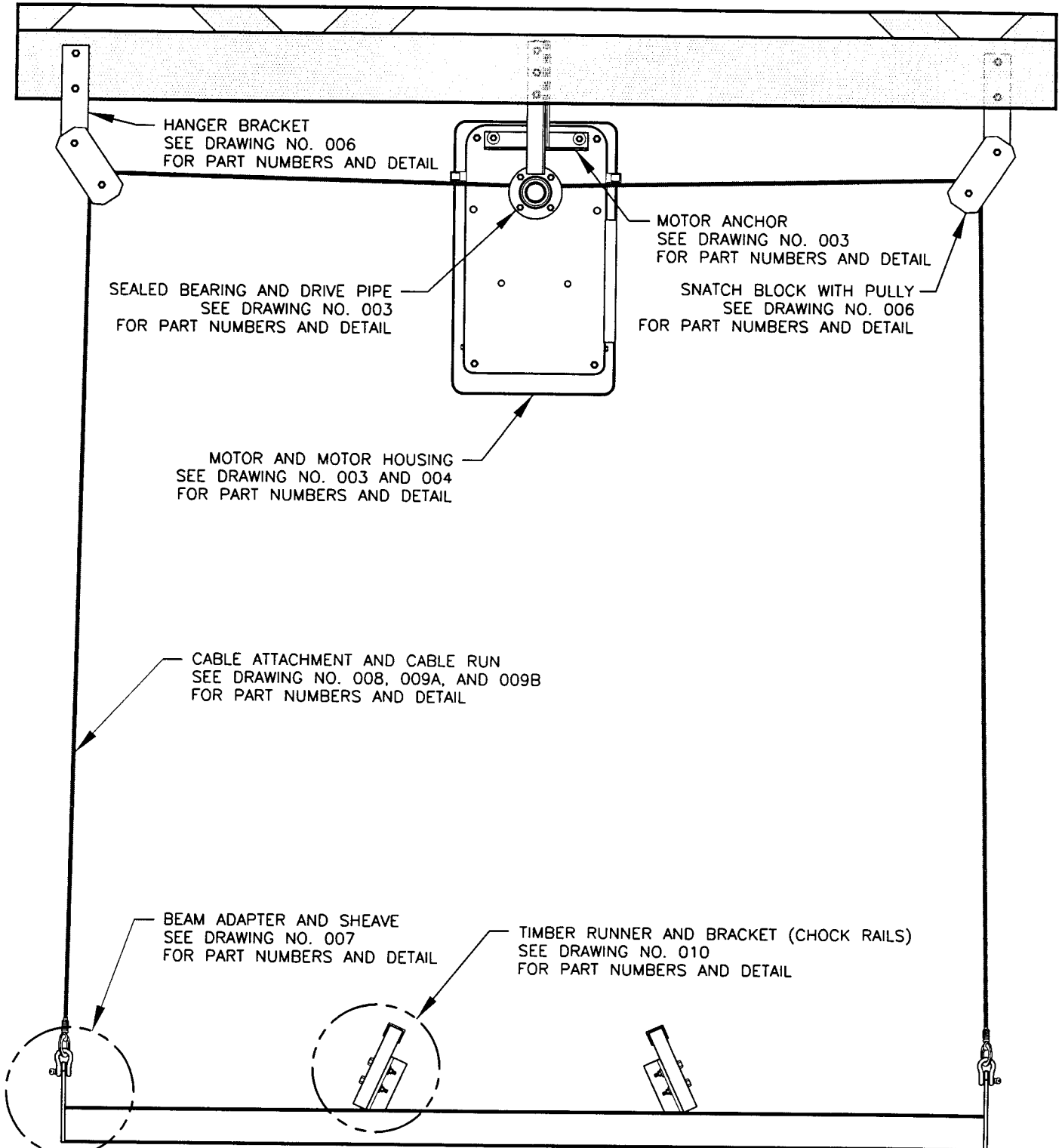
MOTOR HOUSING - FRONT VIEW

(COVER DOWN)

CONTROL WIRE
TO REMOTE CONTROL

GENERAL NOTES:

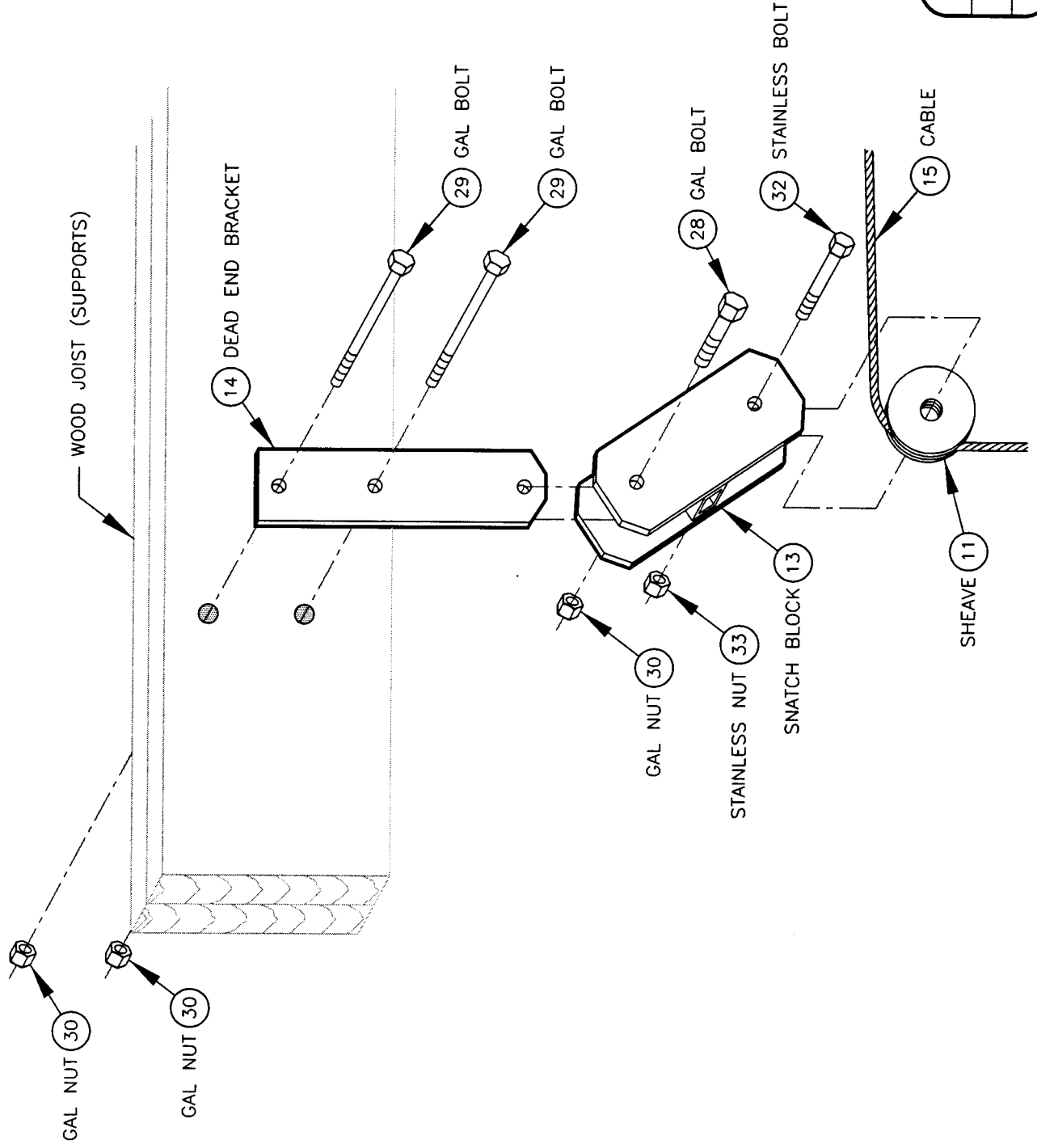
- 1. FOR A DETAIL DRAWING OF VIEW CALLED OUT, GO TO SPECIFIED DRAWING.



Project: Key To Detail Drawings		
No.: 005	Revision Date:	
Scale: None	Date: 06-12-01	Sheet: 1 of 1

GENERAL NOTES:

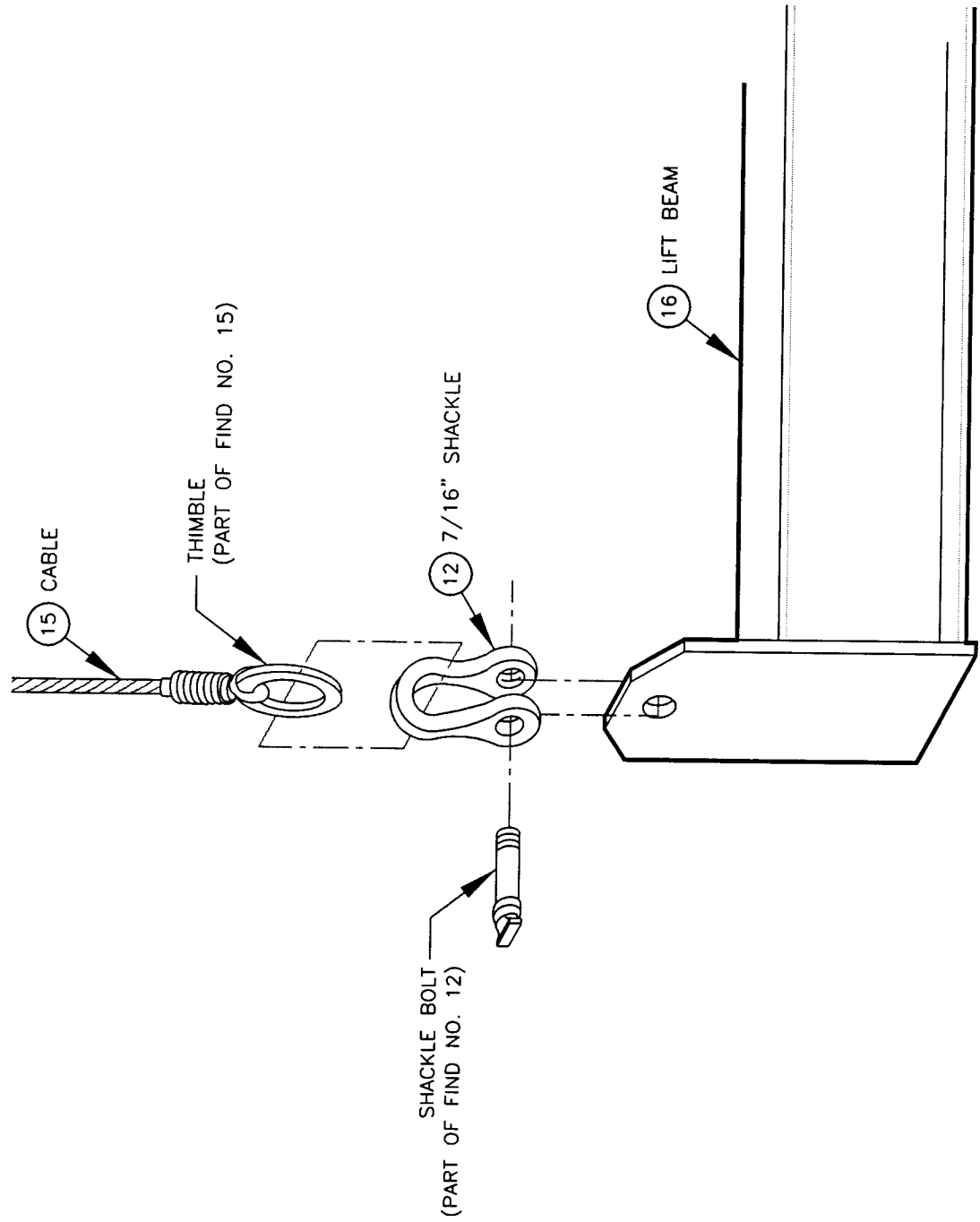
1. FOR LIST OF MATERIALS RELATED TO PART NUMBERS, SEE PARTS LIST.



Project: Snatch Block and Hanger Bracket Detail	
No: 006	Revision Date:
Scale: None	Date: 07-19-01
	Sheet: 1 of 1

GENERAL NOTES:

- 1. FOR LIST OF MATERIALS RELATED TO PART NUMBERS, SEE PARTS LIST.

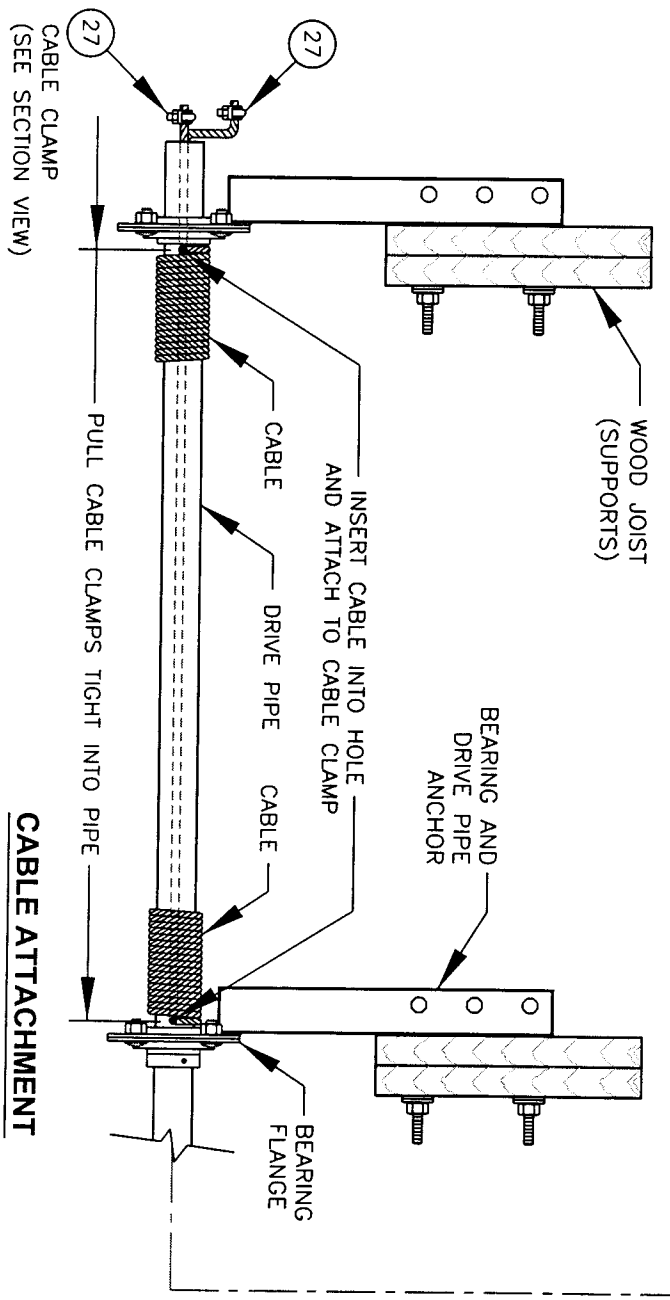
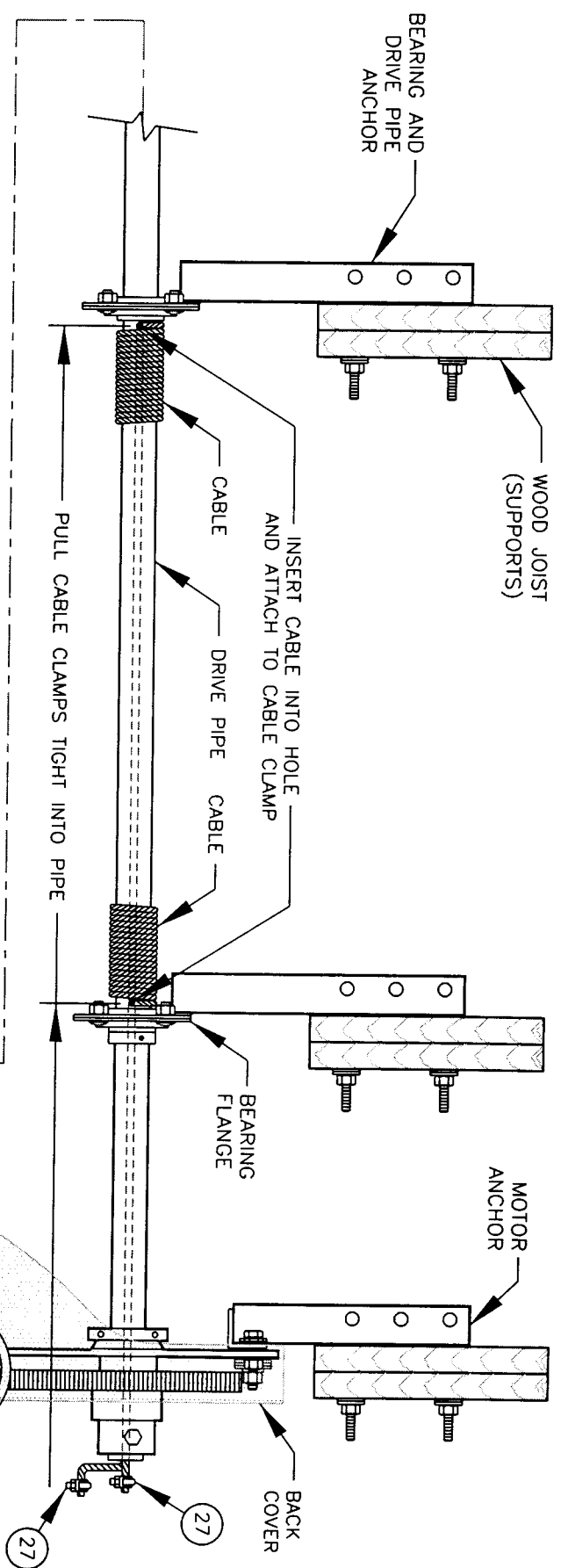


MODEL 3,000

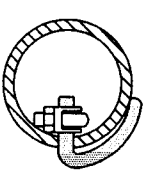
Project: Beam Adapter Detail	
No.: 007	Revision Date:
Scale: None	Date: 06-12-01
Sheet: 1 of 1	

GENERAL NOTES:

1. FOR LIST OF MATERIALS RELATED TO PART NUMBERS, SEE PARTS LIST.



CABLE ATTACHMENT

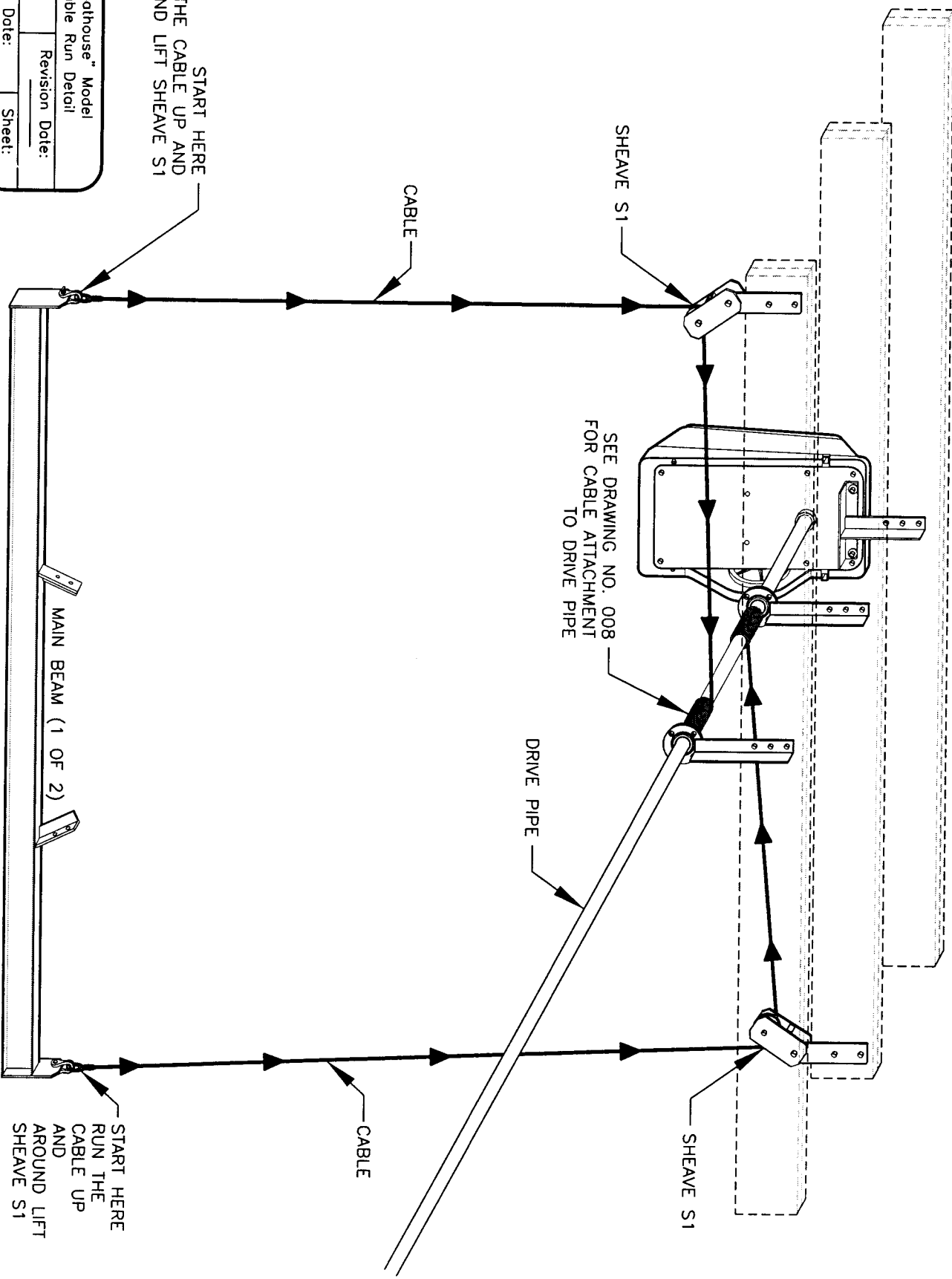


SECTION VIEW
CABLE CLAMP IS PULLED TIGHT INTO DRIVE PIPE

Project: Cable Connections Assembly Detail and Cable Attachment	
No.: 008	Revision Date:
Scale: None	Date: 06-04-01
Sheet: 1 of 1	

GENERAL NOTES:

1. ENOUGH CABLE IS SUPPLIED WITH THE LIFT TO LOWER THE LIFT 15' BELOW SHEAVE BOLT S1. IF A GREATER AMOUNT OF DROP IS REQUIRED, CALL YOUR LIFT SUPPLIER TO ACQUIRE LONGER CABLES.



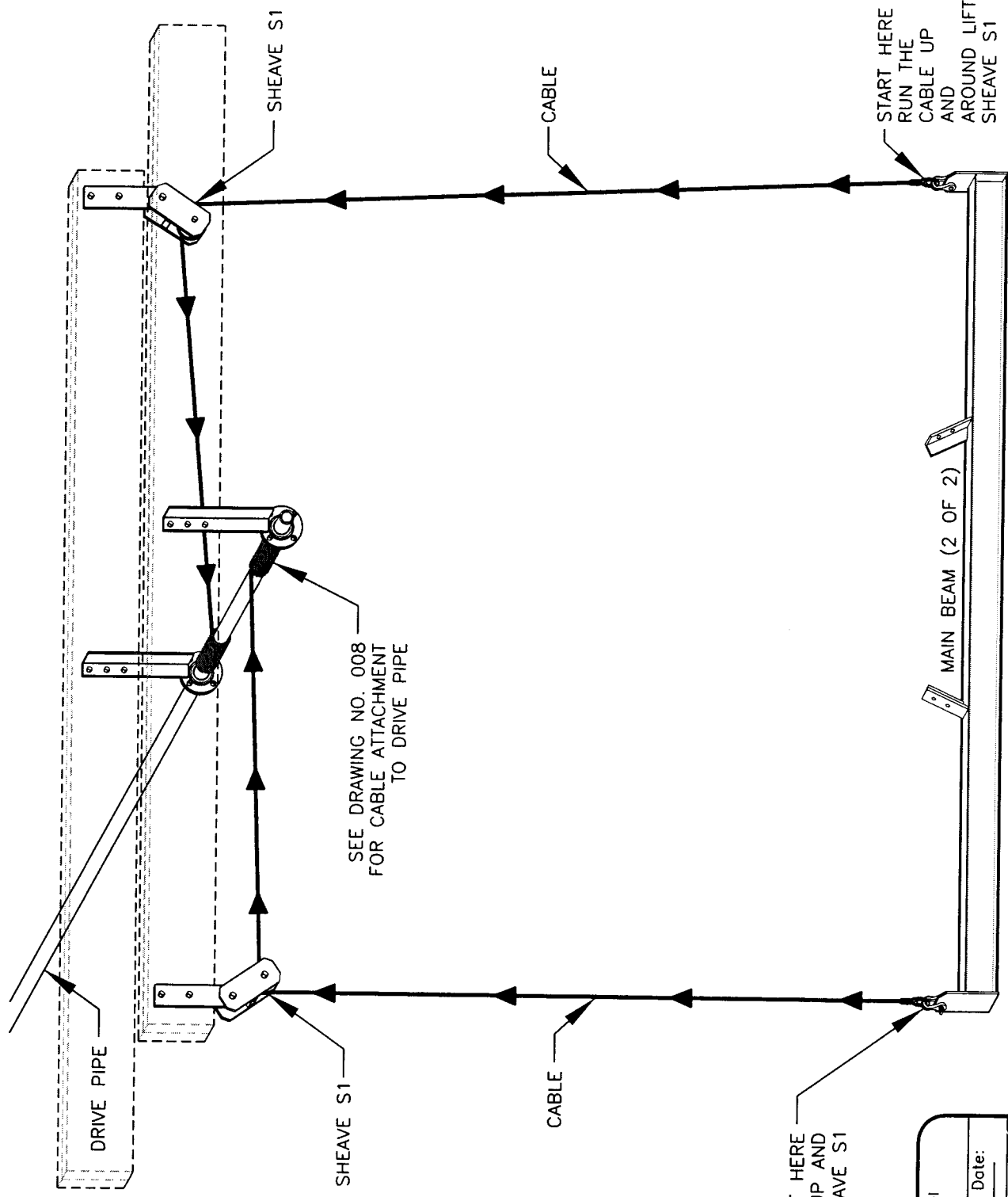
START HERE
RUN THE CABLE UP AND
AROUND LIFT SHEAVE S1

Project: "Boathouse" Model Cable Run Detail			
No.: 009A	Revision:	Date:	Date:
Scale: None	Date: 06-07-01	Sheet: 1 of 2	

START HERE
RUN THE CABLE UP
AND
AROUND LIFT
SHEAVE S1

GENERAL NOTES:

1. ENOUGH CABLE IS SUPPLIED WITH THE LIFT TO LOWER THE LIFT 15' BELOW SHEAVE S1. IF A GREATER AMOUNT OF DROP IS REQUIRED, CALL YOUR LIFT SUPPLIER TO ACQUIRE LONGER CABLES.

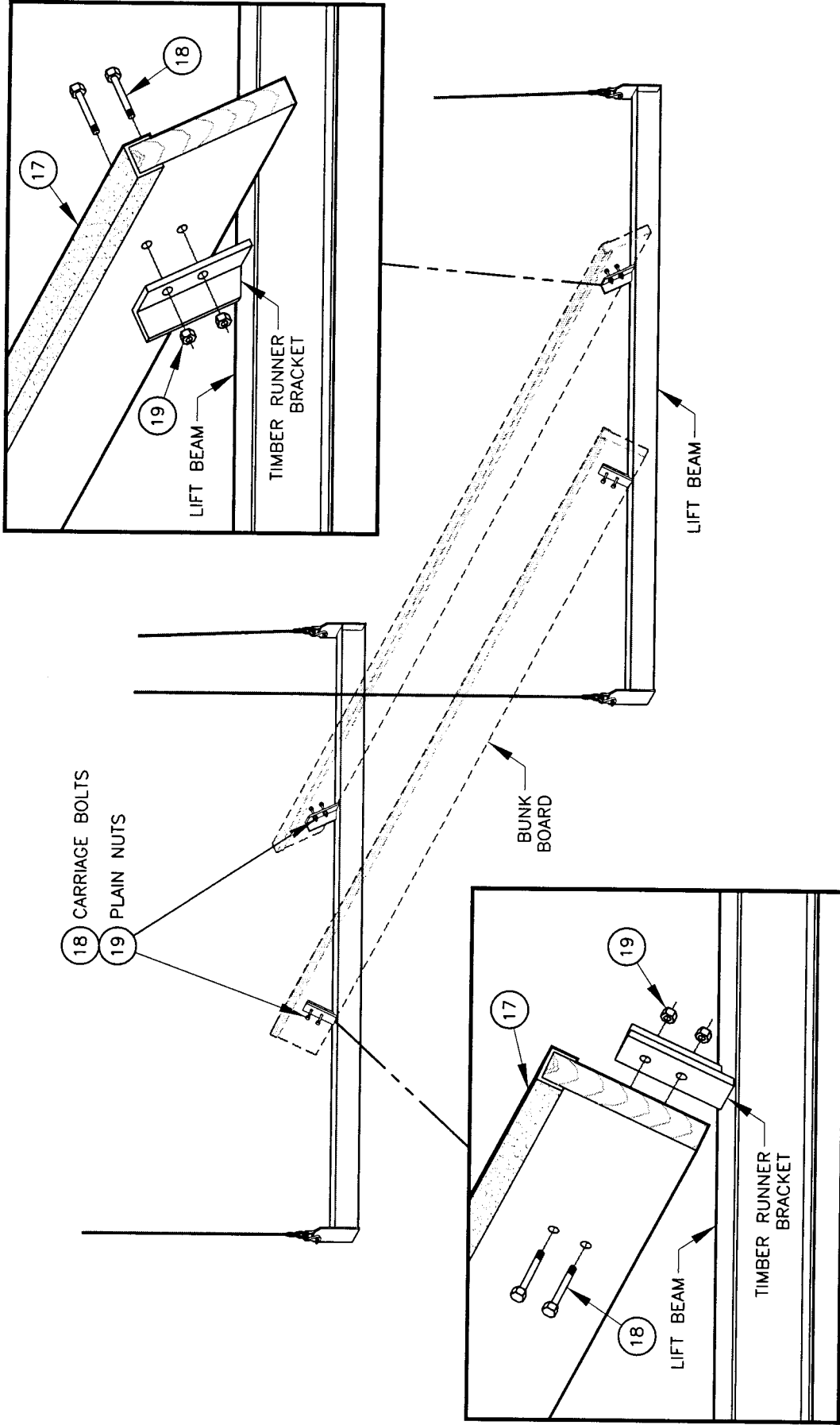


START HERE
RUN THE CABLE UP AND
AROUND LIFT SHEAVE S1

Project: "Boathouse" Model Cable Run Detail			
No:	Q09B	Revision Date:	
Scale:	None	Date:	06-07-01
		Sheet:	2 of 2

GENERAL NOTES:

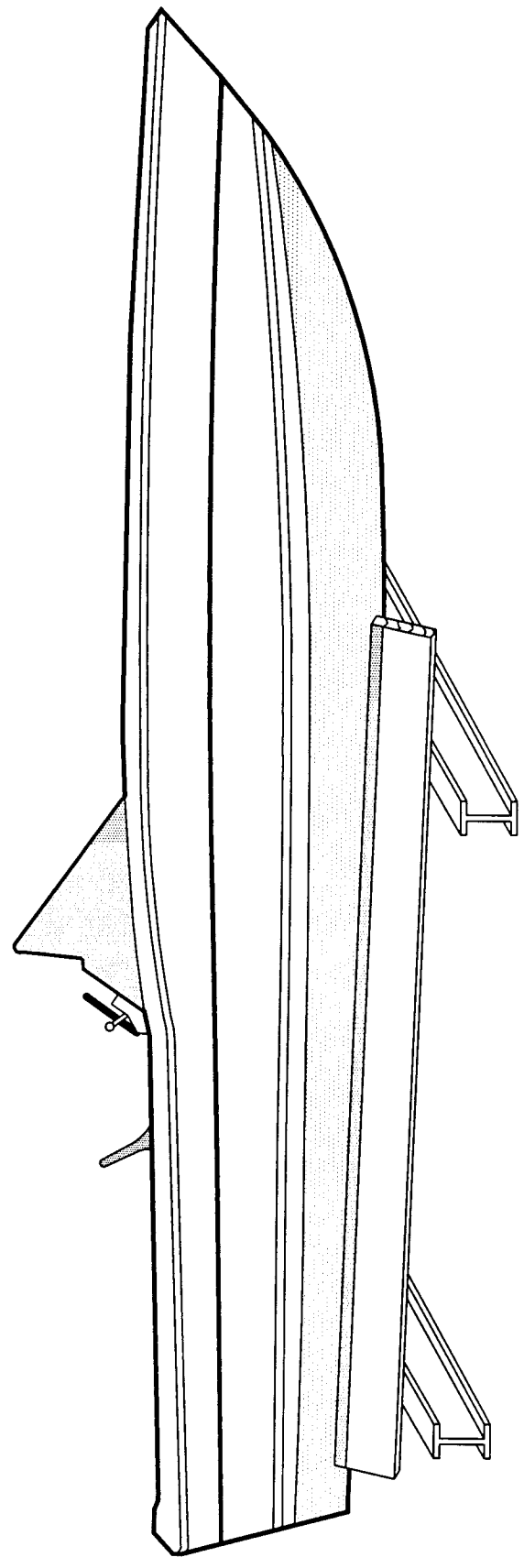
1. BUNK BOARDS, IF NOT SUPPLIED, SHOULD BE 2" x 8" OR 2" x 10" DIMENSIONAL LUMBER.
2. FOR LIST OF MATERIALS RELATED TO PART NUMBERS, SEE PARTS LIST.



Project: Chock Rails	
Assembly Detail	
No.: 010	Revision Date:
Scale: None	Date: 06-11-01
	Sheet: 1 of 1

GENERAL NOTES:

1. FOR OPTIMUM PERFORMANCE, EQUAL WEIGHT DISTRIBUTION IS REQUIRED OVER BOTH CRADLE ARMS.
2. TO OBTAIN EQUAL WEIGHT DISTRIBUTION:
 - A. USE BALANCE POINT OF BOAT.
 - B. DO NOT USE CENTER OF BOAT LENGTH.
3. POSITION THE BOAT IN THE LIFT AS CLOSE TO THE DOCK AS POSSIBLE.



SIDE VIEW OF BOAT

Project: Instructions For Weight Distribution			
No.:	011	Revision Date:	
Scale:	None	Date:	06-11-01
		Sheet:	1 of 1