

MAGNUM

6000 lb.

Boat House

INSTALLATION INSTRUCTIONS

**Boat Lifts Unlimited
Odenton, Maryland
410-674-3100**

Prior to installation:

- a). To insure that the lift will operate properly, Adequate electricity should be available. Electricity will also be needed to install the lift.**
- b). If available ceiling joist are to be used, insure that they are not cracked or show any signs of decay.**
- C). We recommend that the ceiling joist be doubled up 2 x 10 timbers.**
- d). Obtain any required local permits.**

DO NOT USE ANY POWER TOOL WHILE STANDING IN THE WATER. IF ELECTRICITY MUST BE USED NEAR THE WATER, INSURE THAT THE CIRCUIT IS PROTECTED BY A GROUND FAULT INTERRUPTER.

1). Assemble the bearing carriers(5), bearings(7) and the bearing flanges(6) using the $\frac{1}{2} \times 1 \frac{1}{2}$ galvanized carriage bolts(21) and nuts(24). The bearing carriers should be mounted through the center of the boathouse with the motor anchor(4) at one end. Insert the $1 \frac{1}{2}$ schedule 40 plumbing pipe (not supplied) through the bearing. Be sure to install the bearing locks(7) over the pipe. The locks keep the pipe from walking. (Fig 002, 008).

IMPORTANT

A GOOD HEAVY GREASE MUST BE APPLIED TO THE GEAR UNIT PRIOR TO LIFTING THE BOAT. THE GREASE THAT COMES ON THE GEARS FOR SHIPMENT IS NOT SUFFICIENT TO LUBRICATE THE GEARS UNDER LOAD. IT IS BEST TO APPLY THE GREASE WHILE THE UNIT IS RUNNING. UPON LIFTING THE THE BOAT, IF ANY GRINDING OR FINE POWDER IS OBSERVED COMING FROM THE WORM GEAR, REAPPLY THE THE GREASE. AFTER THE GEARS HAVE SEATED, ONLY ANNUAL LUBRICATION IS REQUIRED.

2). Install the motor(1) onto the gear plate(2). Install the back cover (3) onto the gear plate (2) as well as the pulley (9) and the belt (10). Install the gear plate assembly onto the end of the pipe with the spacer sleeve(8) and attach to the motor anchor bracket. Attach the front cover onto the back cover (figure 003, 004).

3). Assemble the snatch blocks(13) and sheaves(11) and attatch them to 4 dead end brackets(14). Attach the brackets to the joist. They should each be spaced 4'6" away from the drive pipe (Figure 002, 006).

4). Install the sheaves (11) into the ends of the lift beams (16) and set them across the slip. Drill two holes $\frac{7}{16}$ dia. Into the drive pipe between the bearing flanges, close to the bearings (figure008). Route the cables through the system and attach the cable to the dead end bracket with the $\frac{7}{16}$ shackle(12). Insert the cables into the drive pipe and install the clamps(27). Wrap the cables onto the drum.

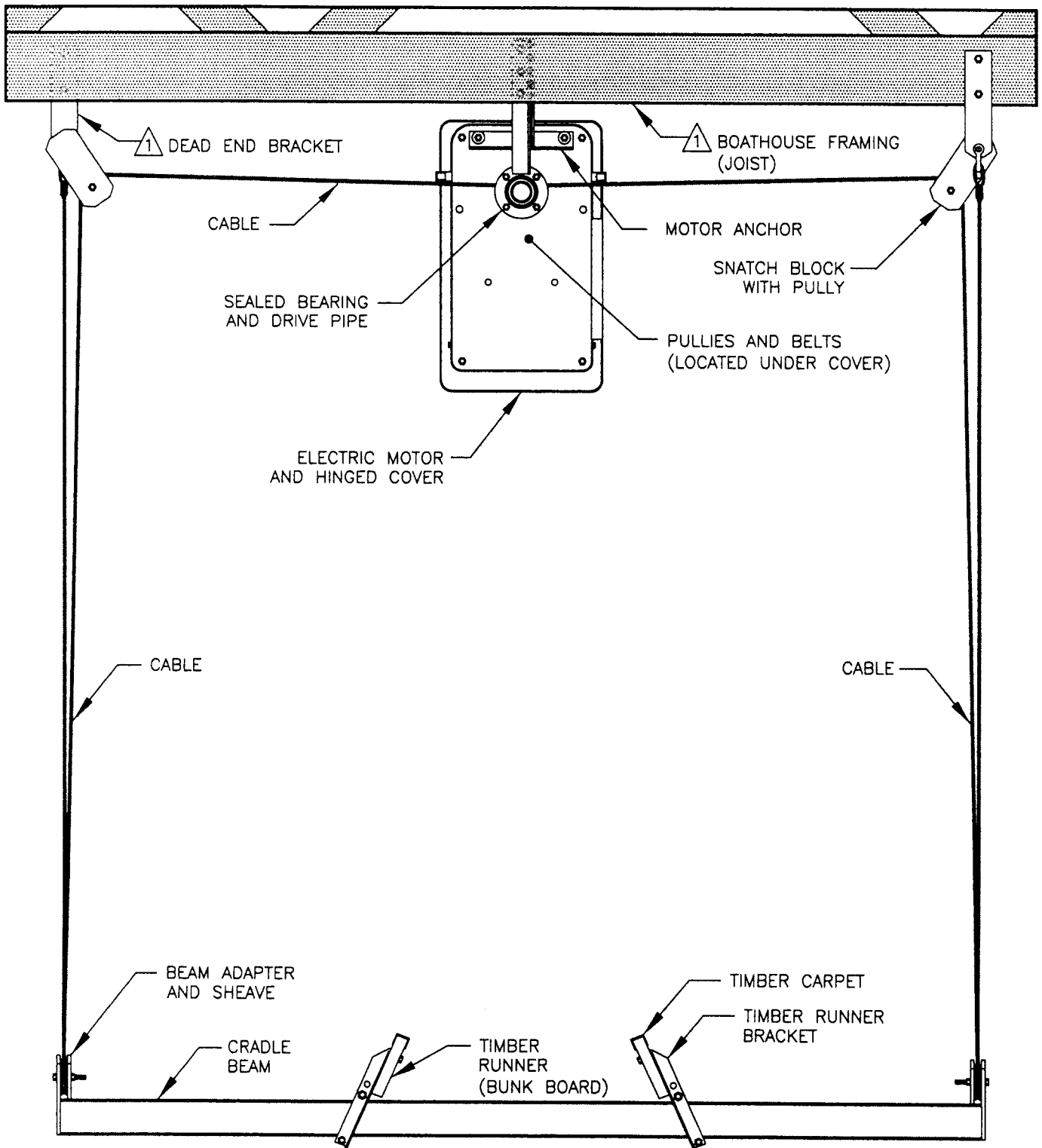
5). Install the bunks and fit the boat (figure 010, 011).

**"BOATHOUSE" MODEL LIFT: 6,000 LB
PARTS LIST**

NO.	ITEM DESCRIPTION	QTY
1	3/4 HP MOTOR WITH LONG CORD 15' AND BOXED SWITCH	1
2	GEAR PLATE	1
3	HINGED COVER	1
4	OVERHEAD MOTOR ANCHOR BRACKET	1
5	BEARING CARRIERS	4
6	BEARING FLANGES	4
7	SA 210 BEARINGS WITH BEARING LOCKS	4
8	SPACER SLEEVE	1
9	10" PULLEY	1
10	4L360 BELT	1
11	1/2" BORE PLAIN SHEAVES	8
12	7/16" SHACKLES	4
13	SNATCH BLOCKS	4
14	DEAD END BRACKETS	8
15	1/4" x 35' CABLES WITH NICO AND THIMBLE	4
16	5" CRADLE BEAMS (CRADLE LIFT ONLY)	2
17	ROLLS 14' CARPET (CRADLE LIFT ONLY)	2
35	TIMBER RUNNER BRACKET	8
18	3/8" x 2 1/2" GALVANIZED CARRAIGE BOLTS (CRADLE LIFT ONLY)	8
19	3/8" GALVANIZED NUTS (CRADLE LIFT ONLY)	8
20	14' WEIGHTED SLINGS (SLING LIFT ONLY--NOT SHOWN)	2
HARDWARE		
21	1/2" x 1" GALVANIZED CARRAIGE BOLTS	16
22	1/2" x 1 1/2" GALVANIZED BOLTS	2
23	1/2" x 2" GALVANIZED BOLTS	2
24	1/2" GALVANIZED NUTS	28
25	1/2" GALVANIZED LOCK WASHERS	2
26	1/2" GALVANIZED FLAT WASHERS	10
27	3/16" WIRE CLIPS	4
28	5/8" x 3" GALVANIZED BOLTS	4
29	5/8" x 6" GALVANIZED BOLTS	18
30	5/8" GALVANIZED NUTS	22
31	STAINLESS STEEL HARDWARE COVERPAK	1
32	1/2" x 3" STAINLESS STEEL BOLTS	8
33	1/2" STAINLESS STEEL LOCK NUTS	8
34	5/8" GALVANIZED WASHERS	18
36	1/2" x 5 1/2" GALVANIZED HEX BOLTS	8

GENERAL NOTES:

⚠ IMPORTANT—JOIST SHOULD BE ADEQUATE TO SUPPORT THE LOAD, WE RECOMMEND 2 x 10' DIMENSIONAL LUMBER. DEAD END BRACKETS SHOULD BE SECURELY ATTACHED TO THE BOATHOUSE FRAMING.

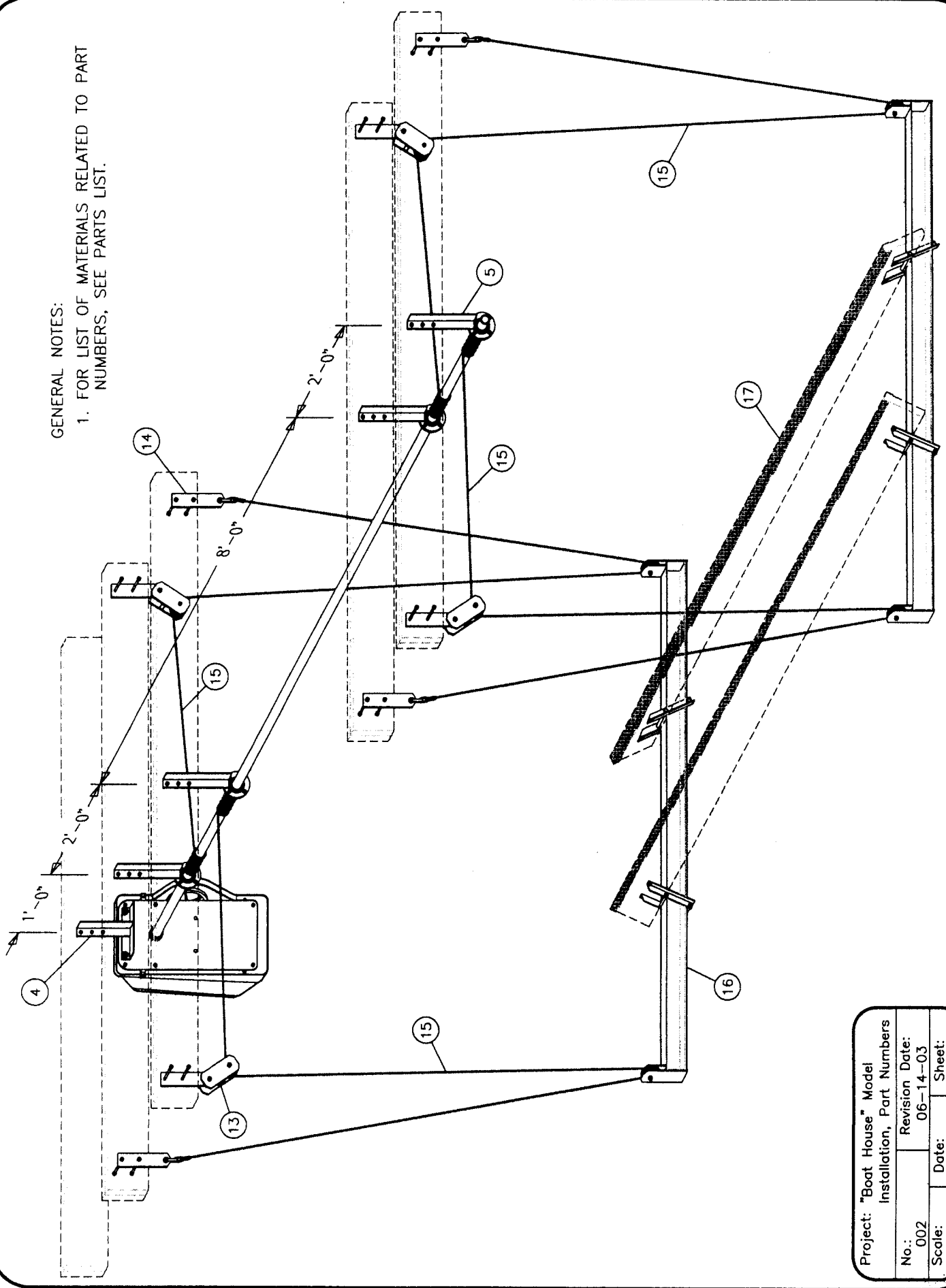


MODEL 6,000 LB LIFT

Project: "Boat House" Part Names (Model 6,000)		
No.: 001	Revision Date: 06-14-03	
Scale: None	Date: 06-27-01	Sheet: 1 of 1

GENERAL NOTES:

1. FOR LIST OF MATERIALS RELATED TO PART NUMBERS, SEE PARTS LIST.

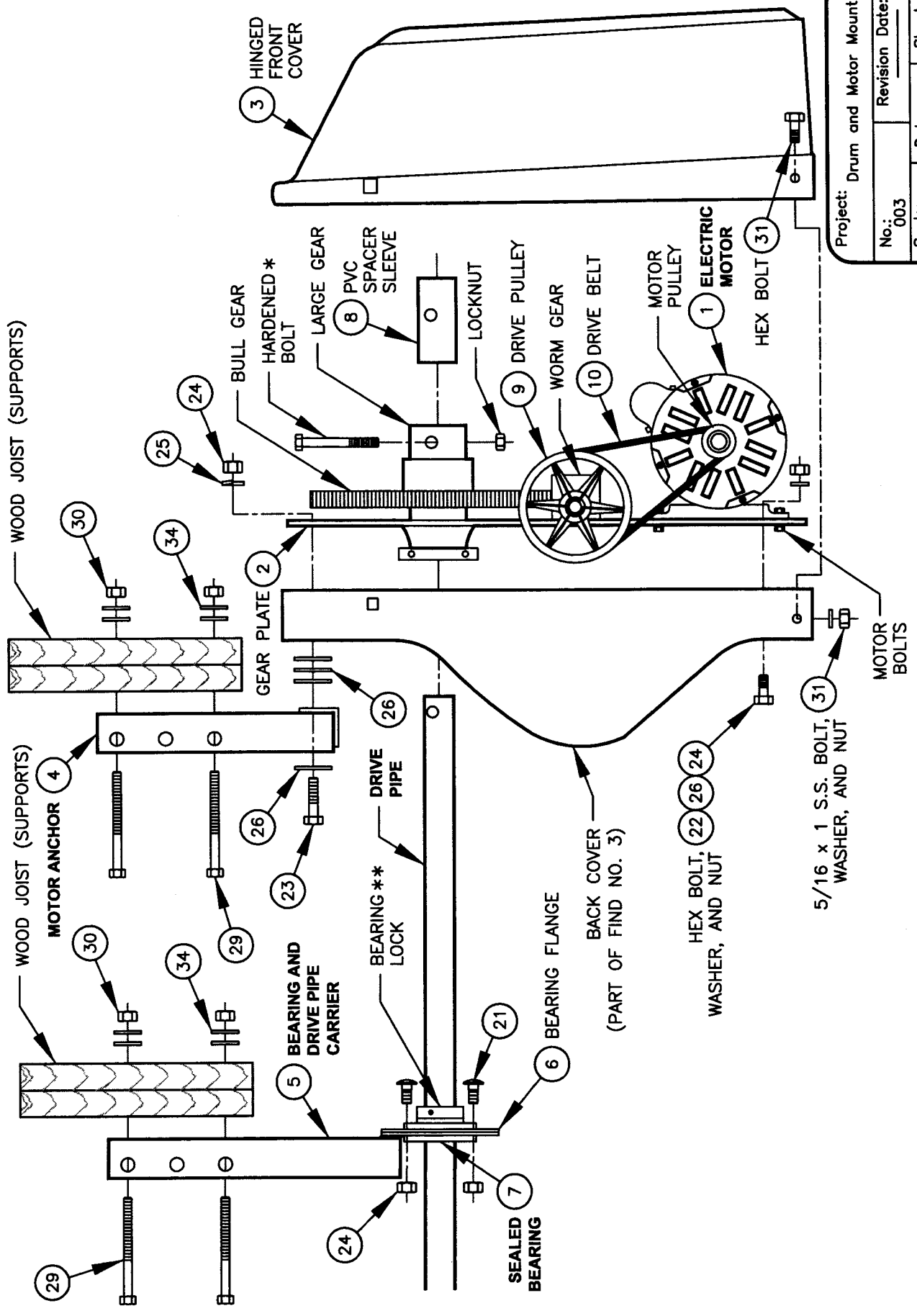


Project: "Boat House" Model			
Installation, Part Numbers			
No.: 002	Revision	Date: 06-14-03	Sheet: 1 of 1
Scale: None	Date: 06-28-01	Sheet: 1 of 1	

BOAT LIFTS UNLIMITED, INC.

GENERAL NOTES:

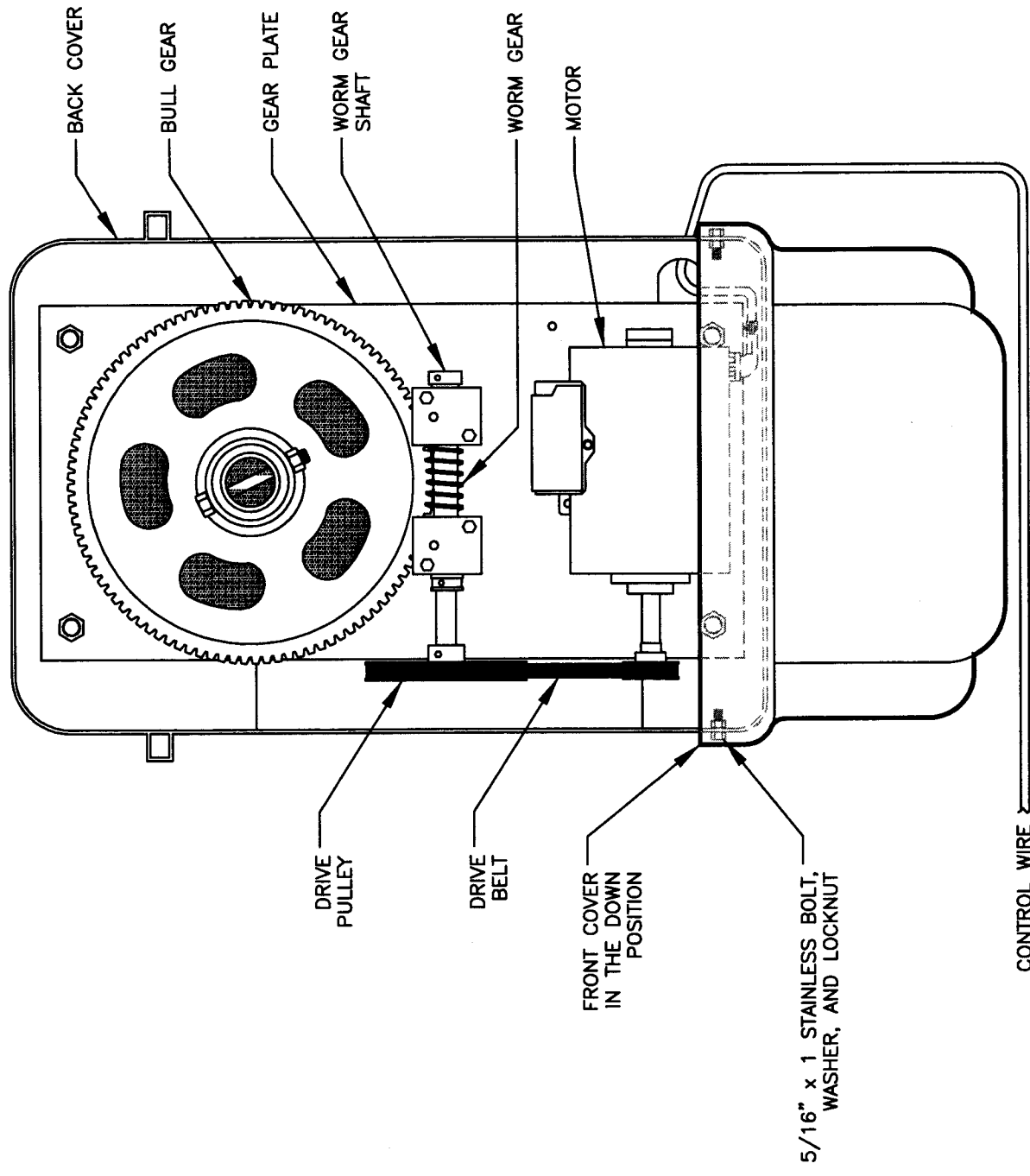
1. *CAUTION: INSTALL ONLY THE HARDENED BOLT SUPPLIED WITH THE GEAR ASSEMBLY.
2. **USE BEARING LOCKS ON ALL BEARINGS TO PREVENT THE DRIVE PIPE FROM WALKING.
3. FOR LIST OF MATERIALS RELATED TO PART NUMBERS, SEE PARTS LIST.



Project: Drum and Motor Mount	
No.: 003	Revision Date: _____
Scale: None	Date: 06-28-01
Sheet: 1 of 1	

GENERAL NOTES:

1. SEE DRAWING NO. 003 (DRUM AND MOTER MOUNT) FOR A SIDE VIEW OF MOTOR AND MOTOR HOUSING.



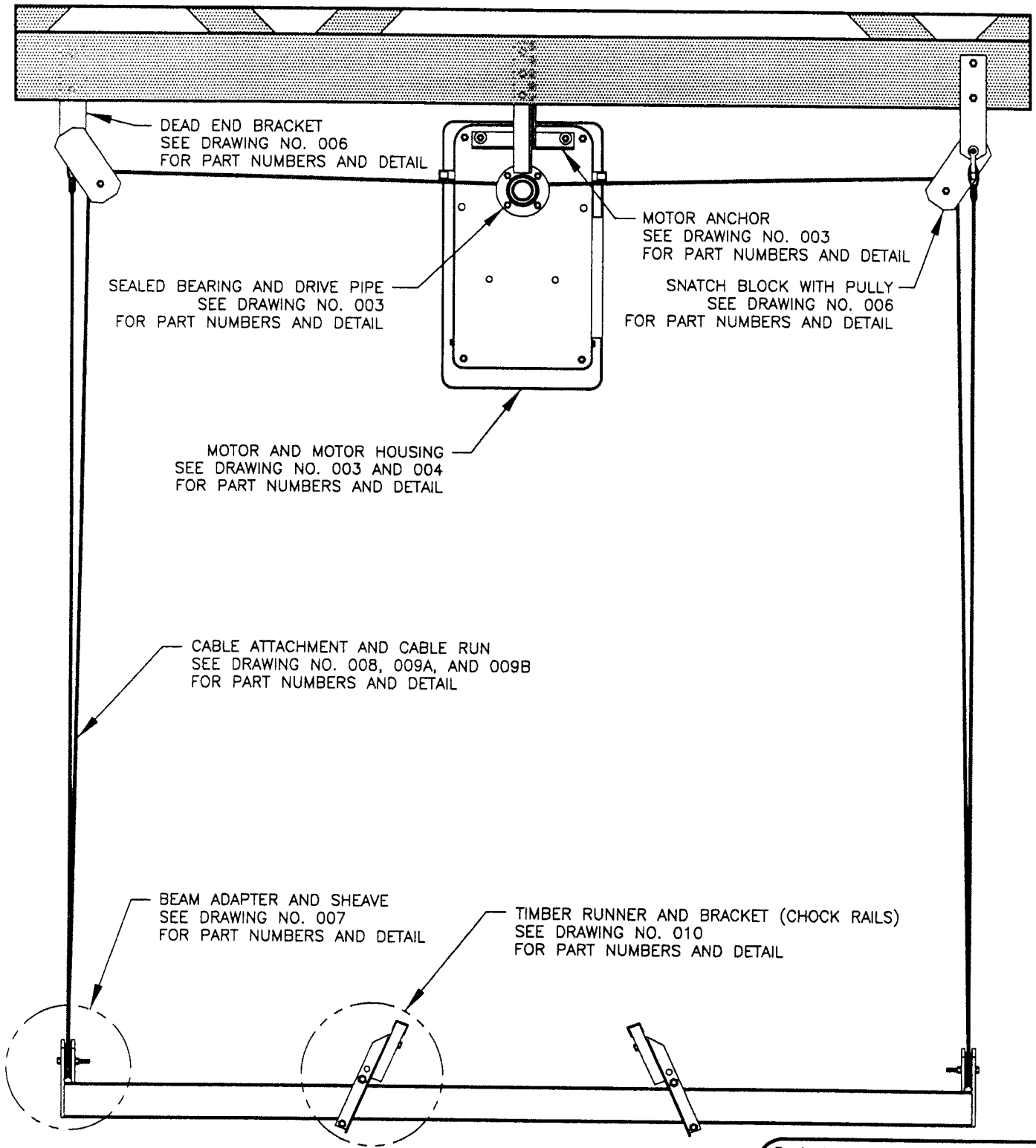
Project: Motor and Motor Housing			
No.: 004	Revision Date:		Sheet: 1 of 1
Scale: None	Date: 06-28-01		

MOTOR HOUSING - FRONT VIEW
(COVER DOWN)

CONTROL WIRE
TO REMOTE CONTROL

GENERAL NOTES:

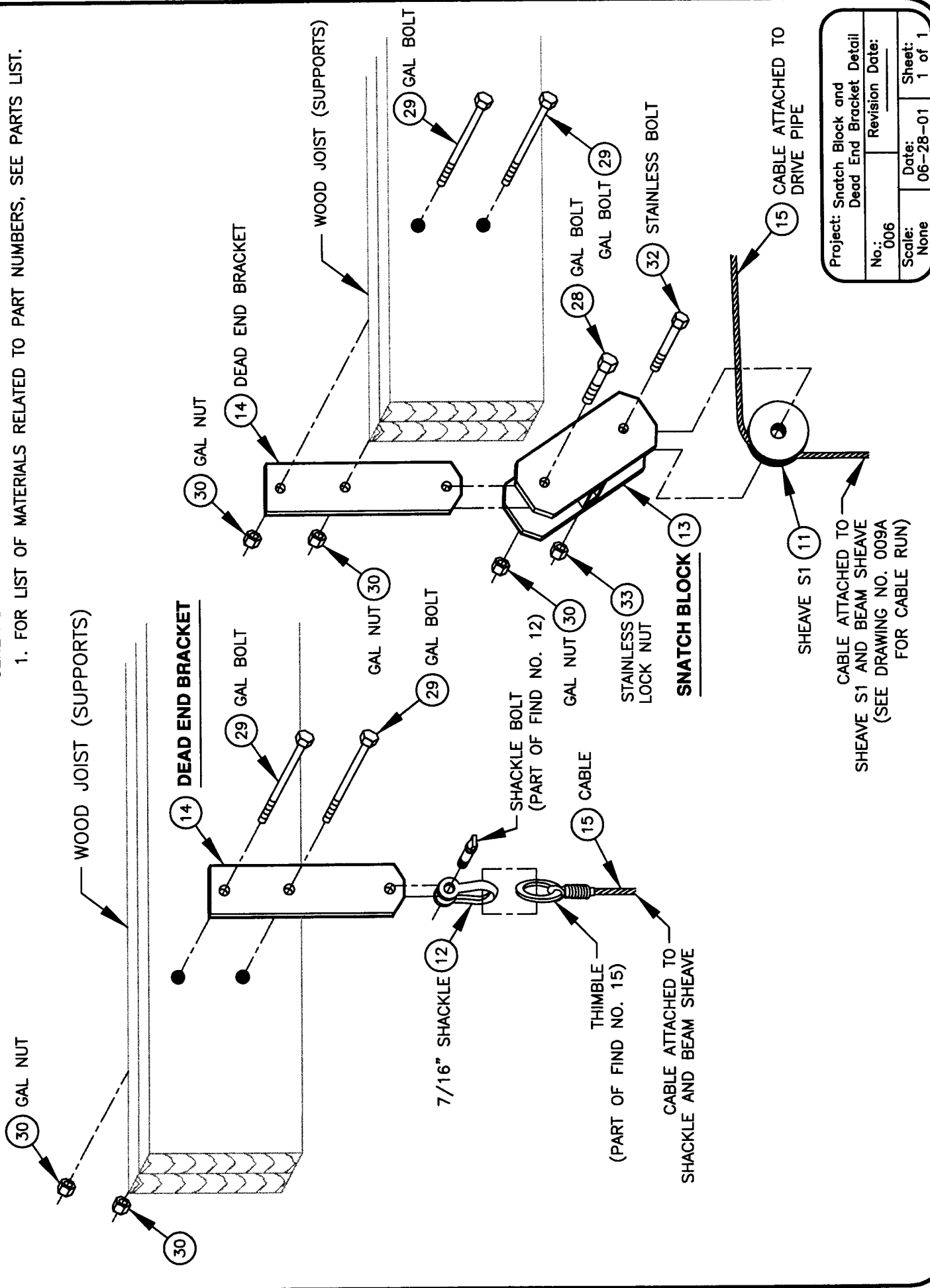
1. FOR A DETAIL DRAWING OF VIEW CALLED OUT, GO TO SPECIFIED DRAWING.



Project: Key To Detail Drawings		
No.: 005	Revision Date: 06-14-03	
Scale: None	Date: 06-28-01	Sheet: 1 of 1

GENERAL NOTES:

1. FOR LIST OF MATERIALS RELATED TO PART NUMBERS, SEE PARTS LIST.



Project: Snatch Block and Dead End Bracket Detail	
No.: 006	Revision Date:
Scale: None	Date: 06-28-01
	Sheet: 1 of 1

CABLE ATTACHED TO SHEAVE S1 AND BEAM SHEAVE (SEE DRAWING NO. 009A FOR CABLE RUN)

SHEAVE S1 11

CABLE ATTACHED TO DRIVE PIPE

SNATCH BLOCK 13

CABLE ATTACHED TO SHACKLE AND BEAM SHEAVE

THIMBLE (PART OF FIND NO. 15)

15 CABLE

SHACKLE BOLT (PART OF FIND NO. 12)

7/16" SHACKLE 12

STAINLESS LOCK NUT 33

GAL NUT 30

GAL BOLT 29

GAL NUT 30

GAL BOLT 29

DEAD END BRACKET 14

GAL NUT 30

DEAD END BRACKET 14

WOOD JOIST (SUPPORTS)

GAL BOLT 29

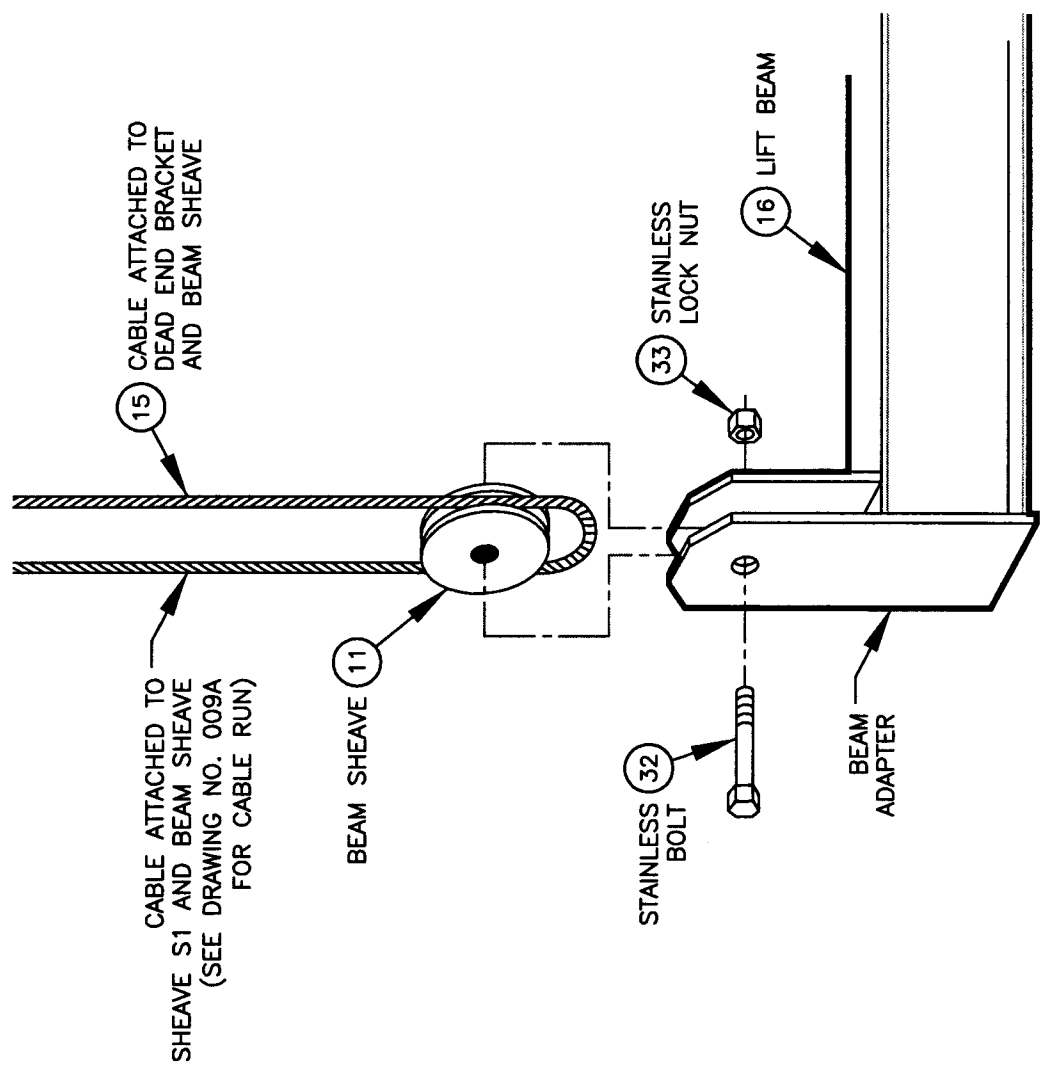
GAL BOLT 29

GAL BOLT 29

STAINLESS BOLT 32

GENERAL NOTES:

- 1. FOR LIST OF MATERIALS RELATED TO PART NUMBERS, SEE PARTS LIST.



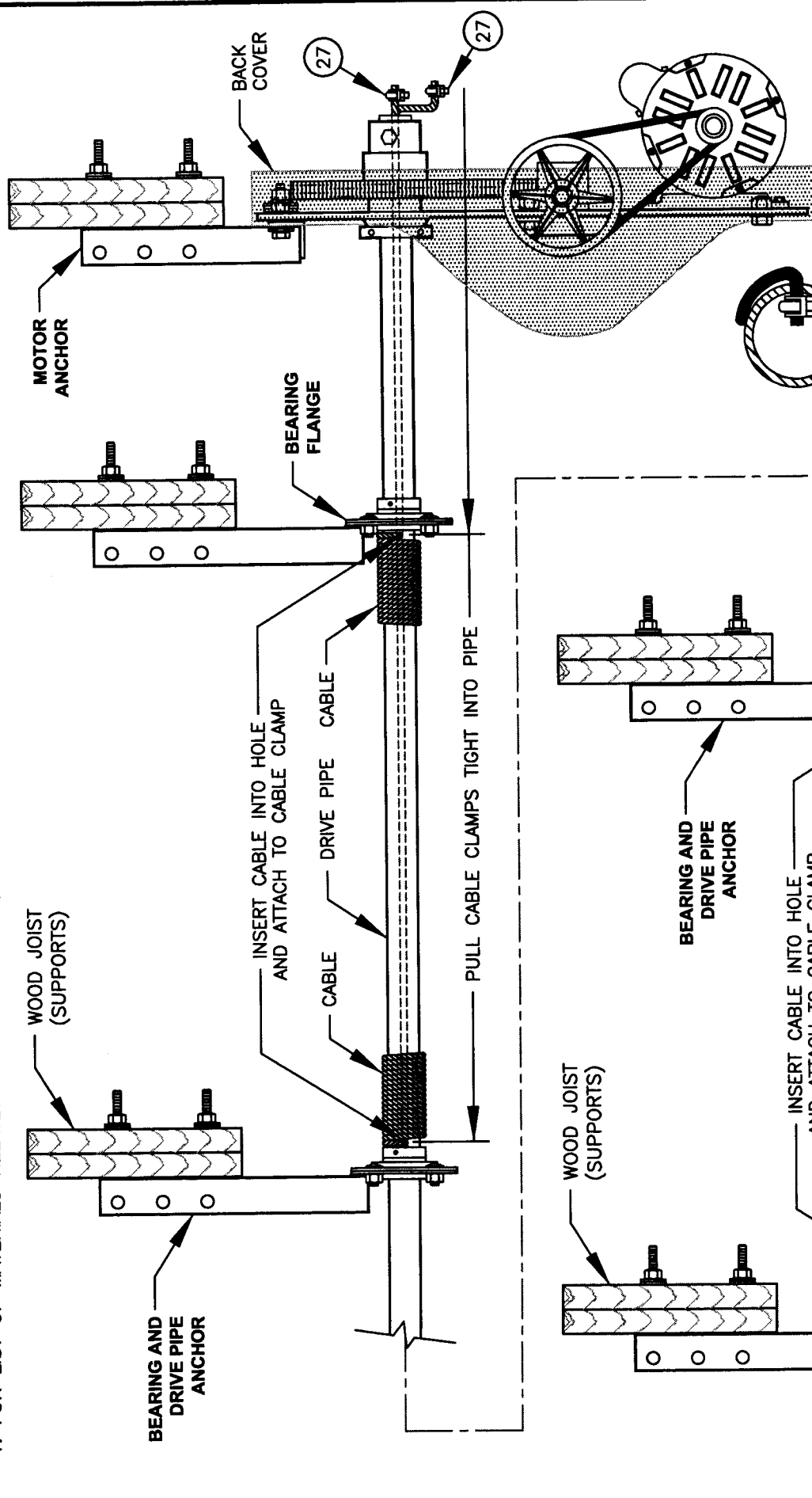
MODEL 6,000

Project: Beam Adapter Detail			
No.:	007	Revision	Date:
Scale:	None	Date:	07-19-01
Sheet:		1 of 1	

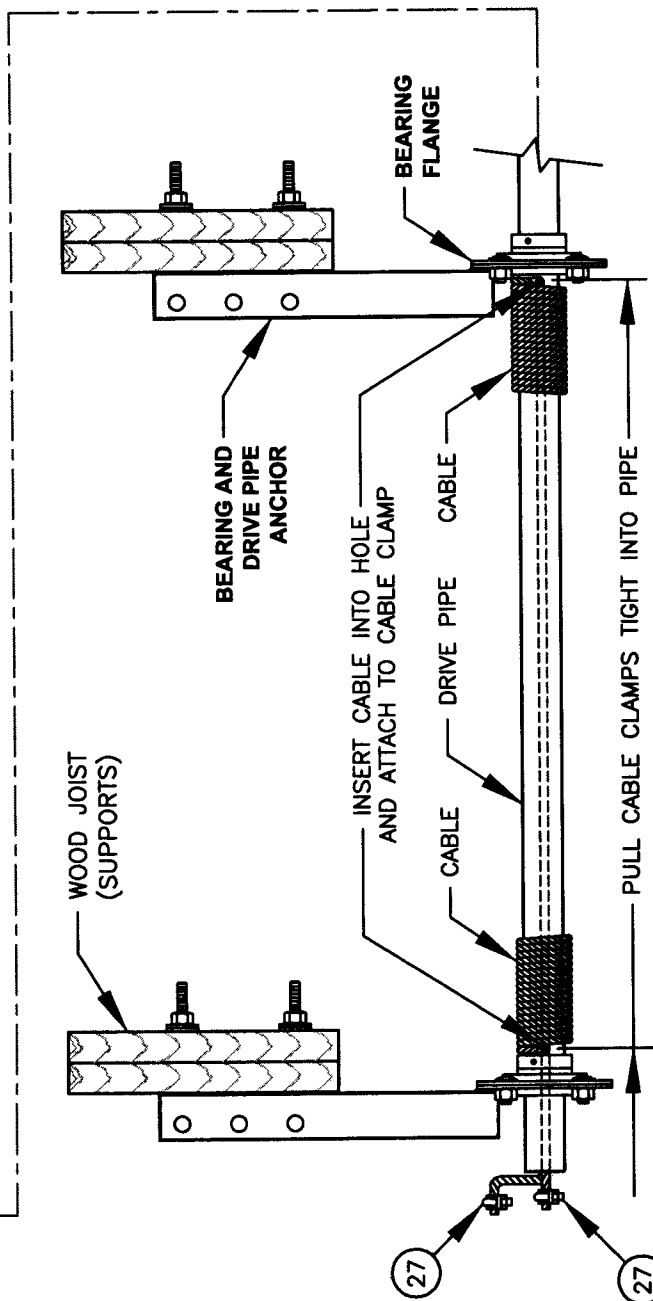
BOAT LIFTS UNLIMITED, INC.

GENERAL NOTES:

1. FOR LIST OF MATERIALS RELATED TO PART NUMBERS, SEE PARTS LIST.



SECTION VIEW
 CABLE CLAMP IS PULLED
 TIGHT INTO DRIVE PIPE



CABLE ATTACHMENT

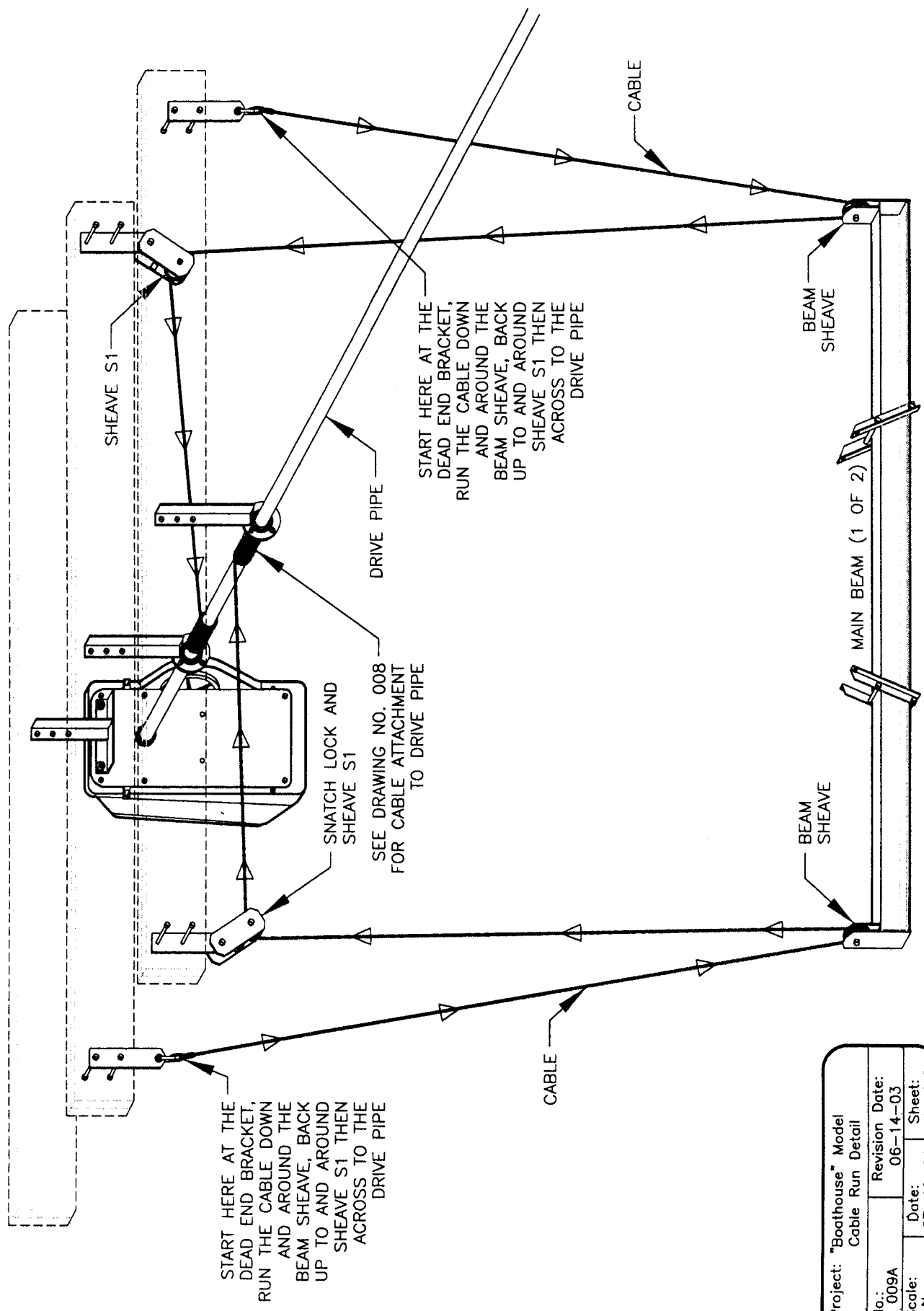
CABLE CLAMP
 (SEE SECTION VIEW)

Project: Cable Connections Assembly Detail and Cable Attachment	
No.: 008	Revision Date:
Scale: None	Date: 06-28-01
	Sheet: 1 of 1

BOAT LIFTS UNLIMITED, INC.

GENERAL NOTES:

1. ENOUGH CABLE IS SUPPLIED WITH THE LIFT TO LOWER THE MAIN BEAM 15' BELOW THE SHEAVE S1 BOLT. IF A GREATER AMOUNT OF DROP IS REQUIRED, CALL YOUR LIFT SUPPLIER TO ACQUIRE LONGER CABLES.



START HERE AT THE DEAD END BRACKET, RUN THE CABLE DOWN AND AROUND THE BEAM SHEAVE, BACK UP TO AND AROUND SHEAVE S1 THEN ACROSS TO THE DRIVE PIPE

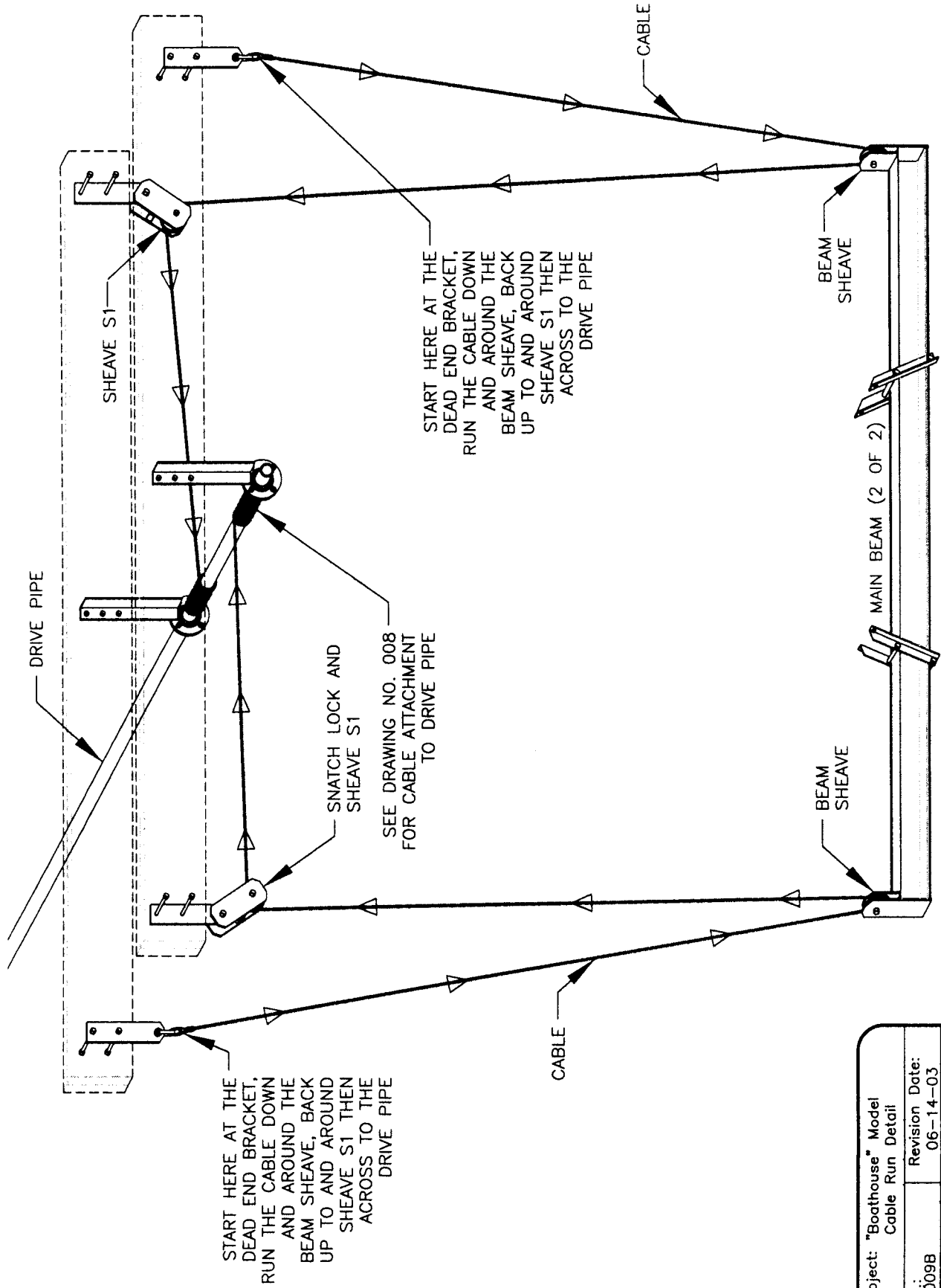
SEE DRAWING NO. 008 FOR CABLE ATTACHMENT TO DRIVE PIPE

START HERE AT THE DEAD END BRACKET, RUN THE CABLE DOWN AND AROUND THE BEAM SHEAVE, BACK UP TO AND AROUND SHEAVE S1 THEN ACROSS TO THE DRIVE PIPE

Project: "Boothouse" Model Cable Run Detail	
No.: 009A	Revision Date: 06-14-03
Scale: None	Date: 07-19-01 Sheet: 1 of 2

GENERAL NOTES:

1. ENOUGH CABLE IS SUPPLIED WITH THE LIFT TO LOWER THE MAIN BEAM 15' BELOW THE SHEAVE S1 BOLT. IF A GREATER AMOUNT OF DROP IS REQUIRED, CALL YOUR LIFT SUPPLIER TO ACQUIRE LONGER CABLES.



START HERE AT THE DEAD END BRACKET, RUN THE CABLE DOWN AND AROUND THE BEAM SHEAVE, BACK UP TO AND AROUND SHEAVE S1 THEN ACROSS TO THE DRIVE PIPE

SEE DRAWING NO. 008 FOR CABLE ATTACHMENT TO DRIVE PIPE

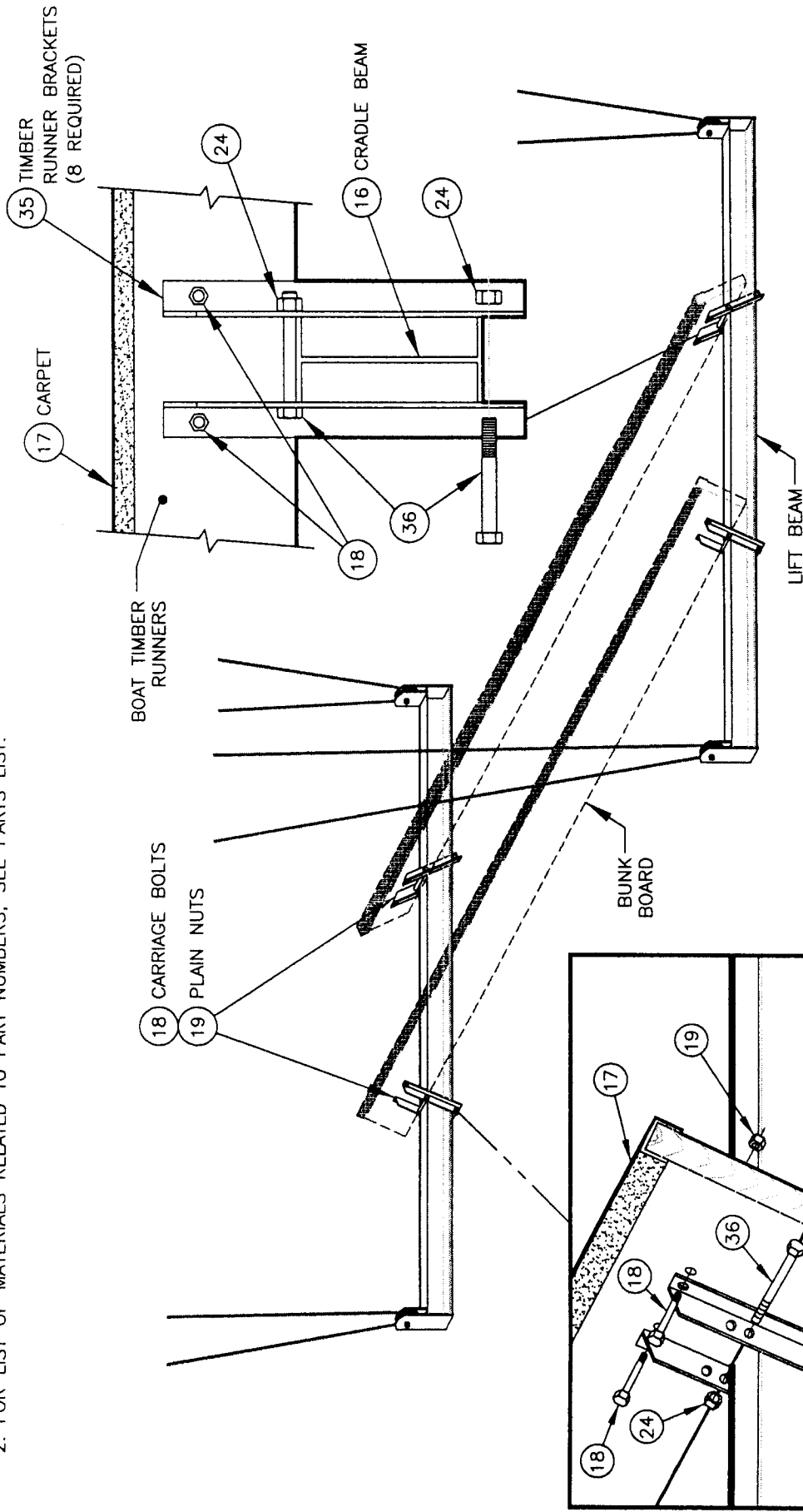
START HERE AT THE DEAD END BRACKET, RUN THE CABLE DOWN AND AROUND THE BEAM SHEAVE, BACK UP TO AND AROUND SHEAVE S1 THEN ACROSS TO THE DRIVE PIPE

Project: "Boathouse" Model Cable Run Detail	
No: 009B	Revision Date: 06-14-03
Scale: None	Date: 07-19-01
	Sheet: 2 of 2

BOAT LIFTS UNLIMITED, INC.

GENERAL NOTES:

1. BUNK BOARDS, IF NOT SUPPLIED, SHOULD BE 2" x 8" OR 2" x 10" DIMENSIONAL LUMBER.
2. FOR LIST OF MATERIALS RELATED TO PART NUMBERS, SEE PARTS LIST.

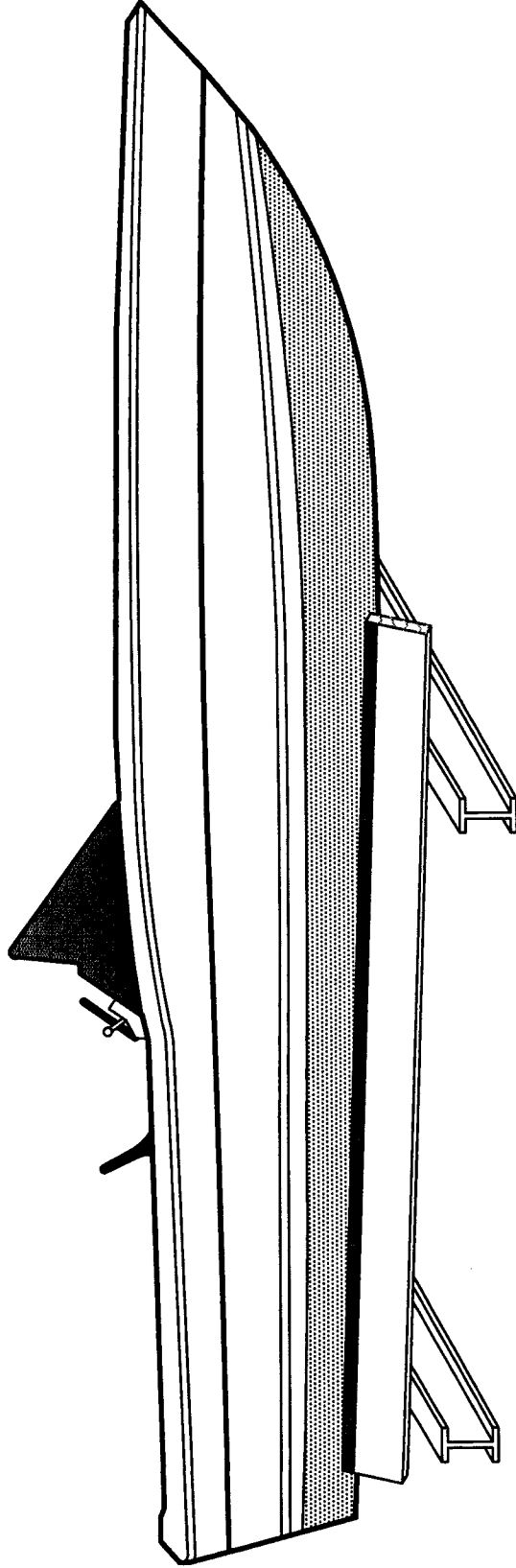


Project: Chock Rails Assembly Detail	
No.: 010	Revision Date: 06-14-03
Scale: None	Date: 07-19-01
	Sheet: 1 of 1

BOAT LIFTS UNLIMITED, INC.

GENERAL NOTES:

1. FOR OPTIMUM PERFORMANCE, EQUAL WEIGHT DISTRIBUTION IS REQUIRED OVER BOTH CRADLE ARMS.
2. TO OBTAIN EQUAL WEIGHT DISTRIBUTION:
 - A. USE BALANCE POINT OF BOAT.
 - B. DO NOT USE CENTER OF BOAT LENGTH.



SIDE VIEW OF BOAT

Project: Instructions For	
Weight Distribution	
No.: 011	Revision Date:
Scale: None	Date: 07-19-01
	Sheet: 1 of 1