

MAGNUM

8000 lb.

Boat House INSTALLATION INSTRUCTIONS

**Boat Lifts Unlimited
Odenton, Maryland
410-674-3100**

Prior to installation:

- a). To insure that the lift will operate properly, Adequate electricity should be available. Electricity will also be needed to install the lift.**
- b). If available ceiling joist are to be used, insure that they are not cracked or show any signs of decay.**
- c). We recommend that the ceiling joist be doubled up 2 x 10 timbers.**
- d). Obtain any required local permits.**

DO NOT USE ANY POWER TOOL WHILE STANDING IN THE WATER. IF ELECTRICITY MUST BE USED NEAR THE WATER, INSURE THAT THE CIRCUIT IS PROTECTED BY A GROUND FAULT INTERRUPTER.

1). Assemble the bearing carriers(5), bearings(7) and the bearing flanges(6) using the ½ x 1 ½ galvanized carriage bolts(21) and nuts(24). The bearing carriers should be mounted as in figure 002. One where the stern of the boat will sit and one approximately 10 feet forward in the boathouse with the motor anchors (4) at one end. Insert the 1 ½ schedule 40 plumbing pipe (not supplied) through the bearings. Be sure to install the bearing locks(7) over the pipe. The locks keep the pipes from walking. (Fig 002, 008).

IMPORTANT

A GOOD HEAVY GREASE MUST BE APPLIED TO THE GEAR UNITS PRIOR TO LIFTING THE BOAT. THE GREASE THAT COMES ON THE GEARS FOR SHIPMENT IS NOT SUFFICIENT TO LUBRICATE THE GEARS UNDER LOAD. IT IS BEST TO APPLY THE GREASE WHILE THE UNITS ARE RUNNING. UPON LIFTING THE THE BOAT, IF ANY GRINDING OR FINE POWDER IS OBSERVED COMING FROM THE WORM GEAR, REAPPLY THE THE GREASE. AFTER THE GEARS HAVE SEATED, ONLY ANNUAL LUBRICATION IS REQUIRED.

2). Install the motors (1) onto the gear plates (2). Install the back covers (3) onto the gear plates (2) as well as the pulleys (9) and the belts (10). Install the gear plate assemblies onto the ends of the pipes with the spacer sleeves(8) and attach to the motor anchor brackets. Attach the front covers onto the back covers (figure 003, 004).

3). Install the sheaves (11) into the ends of the lift beams (16) and set them across the slip. Drill one hole, 7/16 dia. into the drive pipe between the bearing flanges, close to the bearings (figure008). Route the cables through the system and attach the cable to the dead end bracket with the 7/16 shackle(12). Insert the cables into the drive pipe and install the clamps(27). Wrap the cables onto the drum.

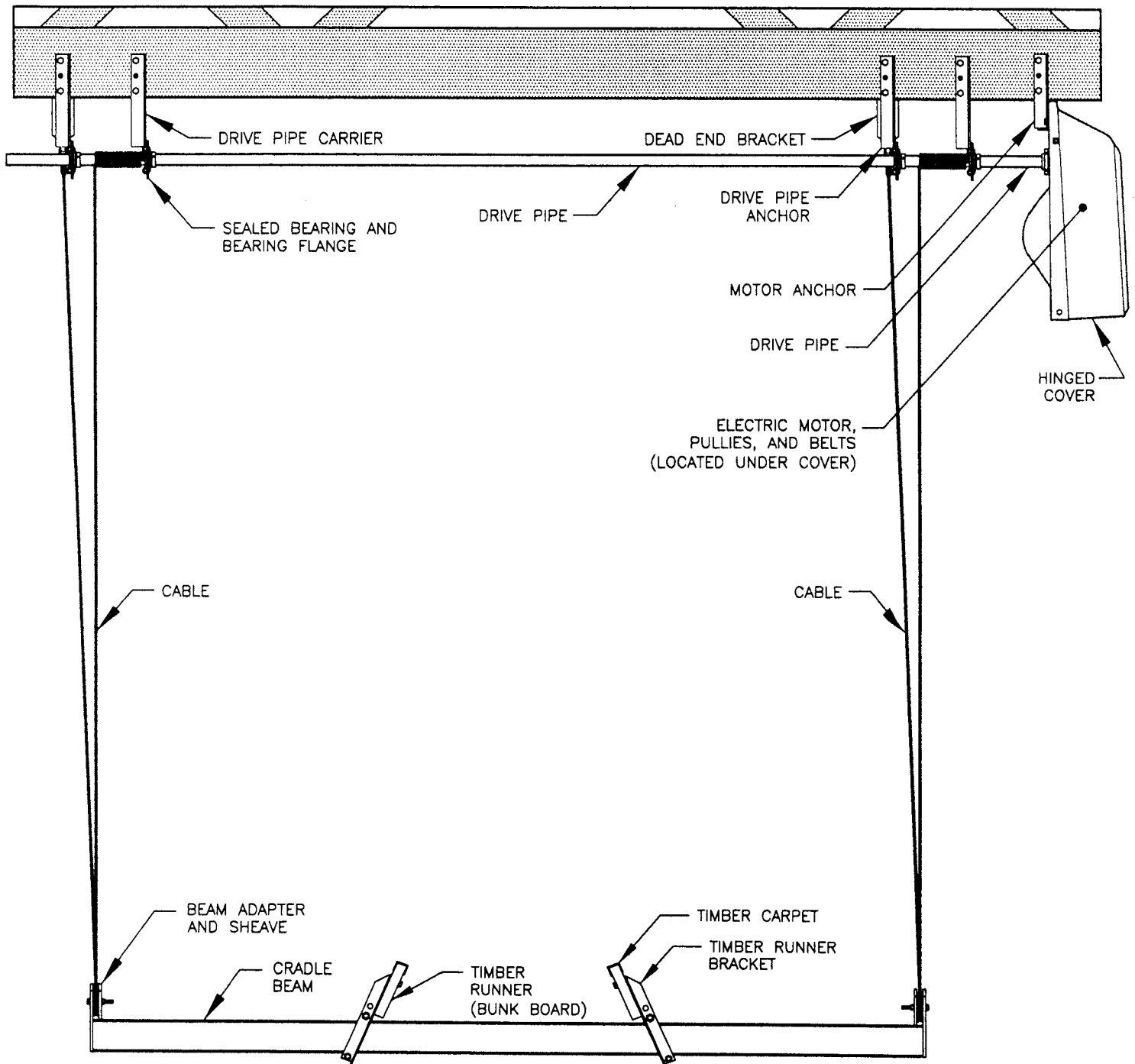
5). Install the bunks and fit the boat (figure 010, 011).

**"BOATHOUSE" MODEL LIFT: 8,000 LB
PARTS LIST**

NO.	ITEM DESCRIPTION	QTY
1	3/4 HP MOTOR WITH LONG CORD 15' AND BOXED SWITCH	2
2	GEAR PLATE	2
3	HINGED COVER	2
4	OVERHEAD MOTOR ANCHOR BRACKET	2
5	BEARING CARRIERS	8
6	BEARING FLANGES	8
7	SA 210 BEARINGS WITH BEARING LOCKS	8
8	SPACER SLEEVE	2
9	10" PULLEY	2
10	4L360 BELT	2
11	1/2" BORE PLAIN SHEAVES	4
12	7/16" SHACKLES	4
13	SNATCH BLOCKS (SLING LIFT ONLY)	4
14	DEAD END BRACKETS	4
15	1/4" x 30' CABLES WITH NICO AND THIMBLE	4
16	5" CRADLE BEAMS (CRADLE LIFT ONLY)	2
17	ROLLS 14' CARPET (CRADLE LIFT ONLY)	2
35	TIMBER RUNNER BRACKET	8
18	3/8" x 2 1/2" GALVANIZED CARRAIGE BOLTS (CRADLE LIFT ONLY)	8
19	3/8" GALVANIZED NUTS (CRADLE LIFT ONLY)	8
20	14' WEIGHTED SLINGS (SLING LIFT ONLY--NOT SHOWN)	2
HARDWARE		
21	1/2" x 1" GALVANIZED CARRAIGE BOLTS	32
22	1/2" x 1 1/2" GALVANIZED BOLTS	4
23	1/2" x 2" GALVANIZED BOLTS	4
24	1/2" GALVANIZED NUTS	40
25	1/2" GALVANIZED LOCK WASHERS	4
26	1/2" GALVANIZED FLAT WASHERS	20
27	3/16" WIRE CLIPS	4
28	5/8" x 3" GALVANIZED BOLTS (SLING LIFT ONLY)	4
29	5/8" x 6" GALVANIZED BOLTS	28
30	5/8" GALVANIZED NUTS	28
31	STAINLESS STEEL HARDWARE COVERPAK	2
32	1/2" x 3" STAINLESS STEEL BOLTS	4
33	1/2" STAINLESS STEEL LOCK NUTS	4
34	5/8" GALVANIZED WASHERS	28
36	1/2" x 5 1/2" GALVANIZED HEX BOLTS	8

GENERAL NOTES:

⚠ IMPORTANT—JOIST SHOULD BE ADEQUATE TO SUPPORT THE LOAD, WE RECOMMEND 2 x 10' DIMENSIONAL LUMBER. DEAD END BRACKETS SHOULD BE SECURELY ATTACHED TO THE BOATHOUSE FRAMING.

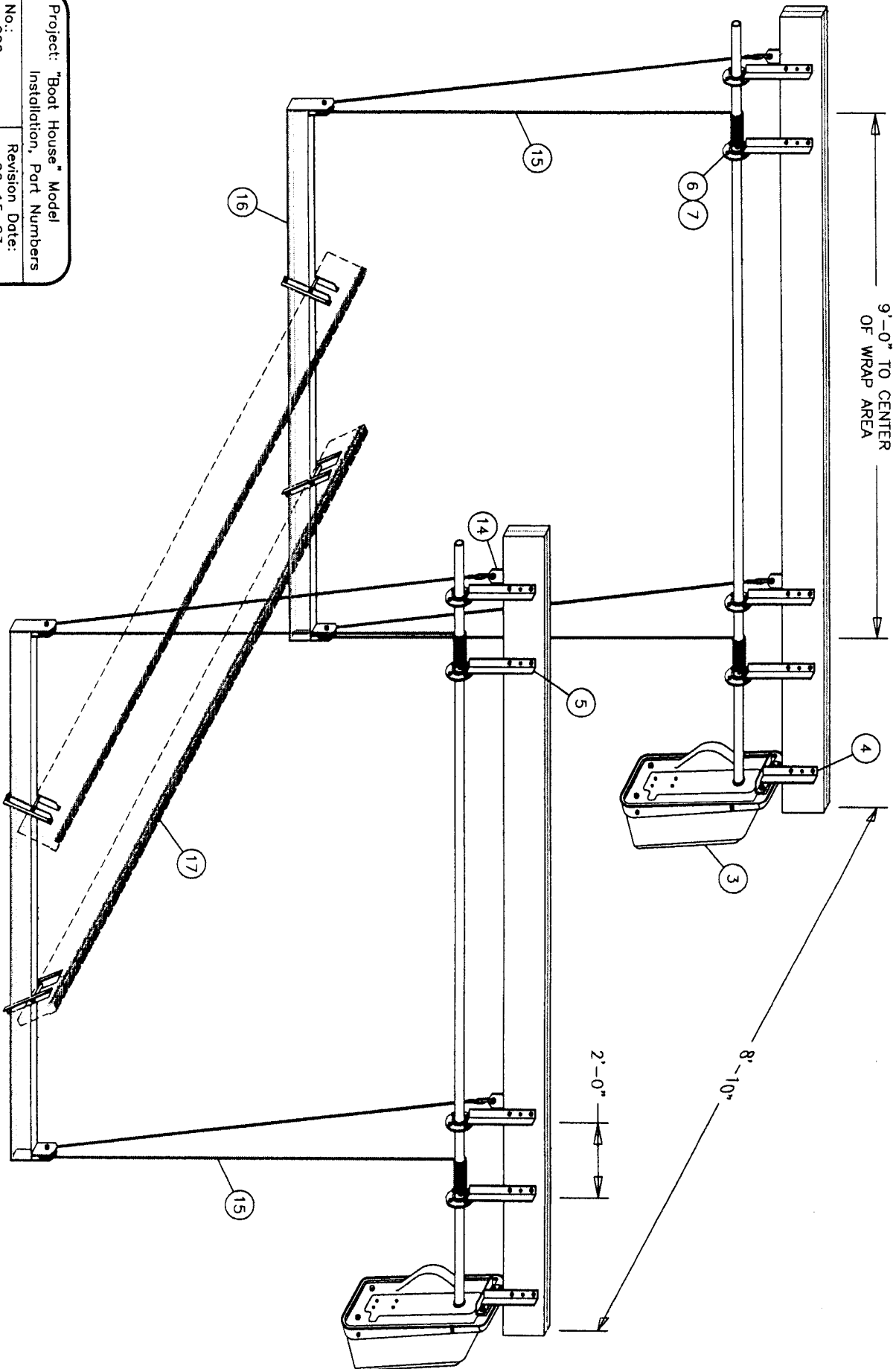


MODEL 8,000 LB LIFT

Project: "Boat House" Part Names (Model 8,000)		
No.: 001	Revision Date: 06-15-03	
Scale: None	Date: 08-07-01	Sheet: 1 of 1

GENERAL NOTES:

1. FOR LIST OF MATERIALS RELATED TO PART NUMBERS, SEE PARTS LIST.

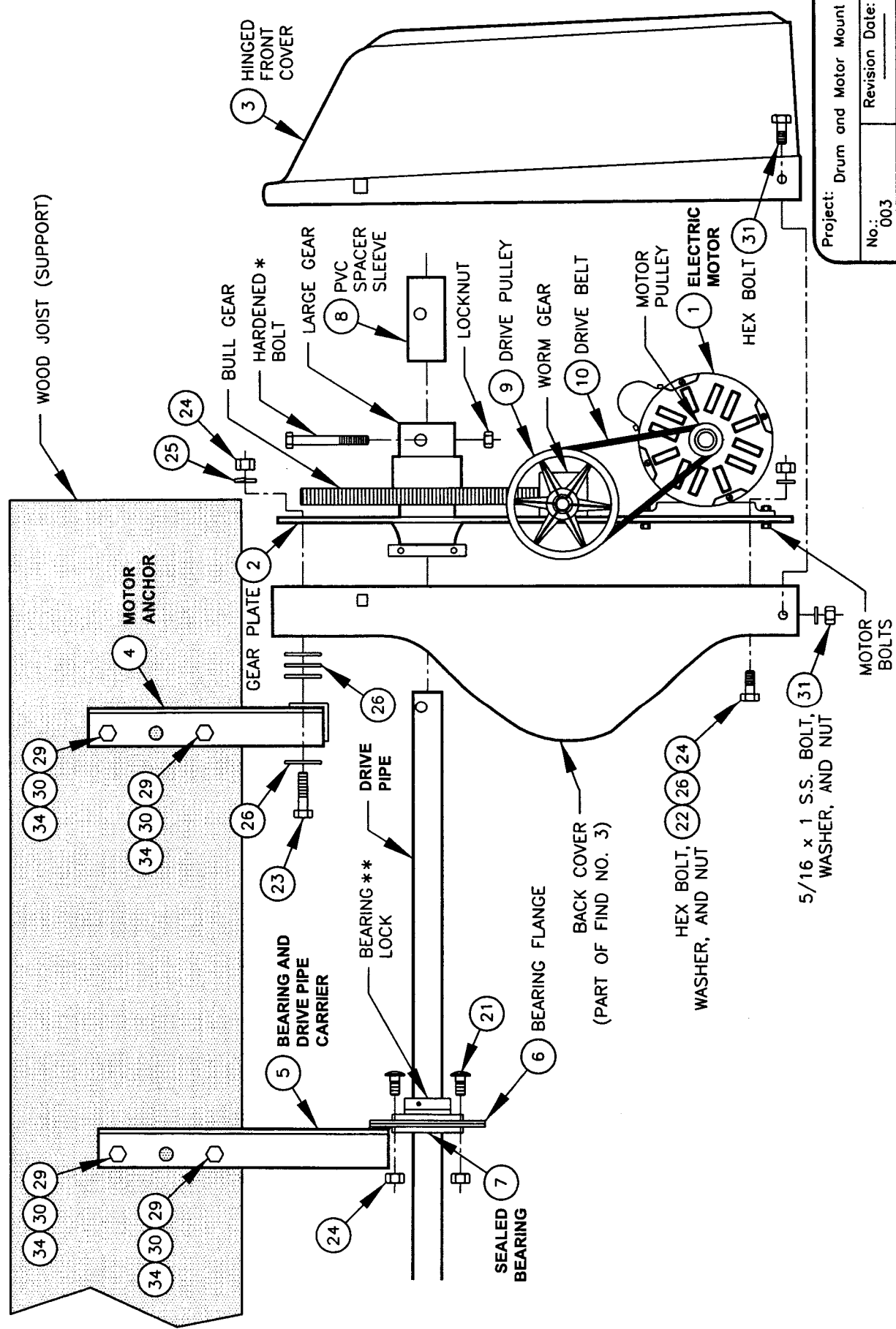


Project: "Boat House" Model	
Installation, Part Numbers	
No.: 002	Revision Date: 06-15-03
Scale: None	Date: 08-08-01
	Sheet: 1 of 1

BOAT LIFTS UNLIMITED, INC.

GENERAL NOTES:

1. * CAUTION: INSTALL ONLY THE HARDENED BOLT SUPPLIED WITH THE GEAR ASSEMBLY.
2. ** USE BEARING LOCKS ON ALL BEARINGS TO PREVENT THE DRIVE PIPE FROM WALKING.
3. FOR LIST OF MATERIALS RELATED TO PART NUMBERS, SEE PARTS LIST.

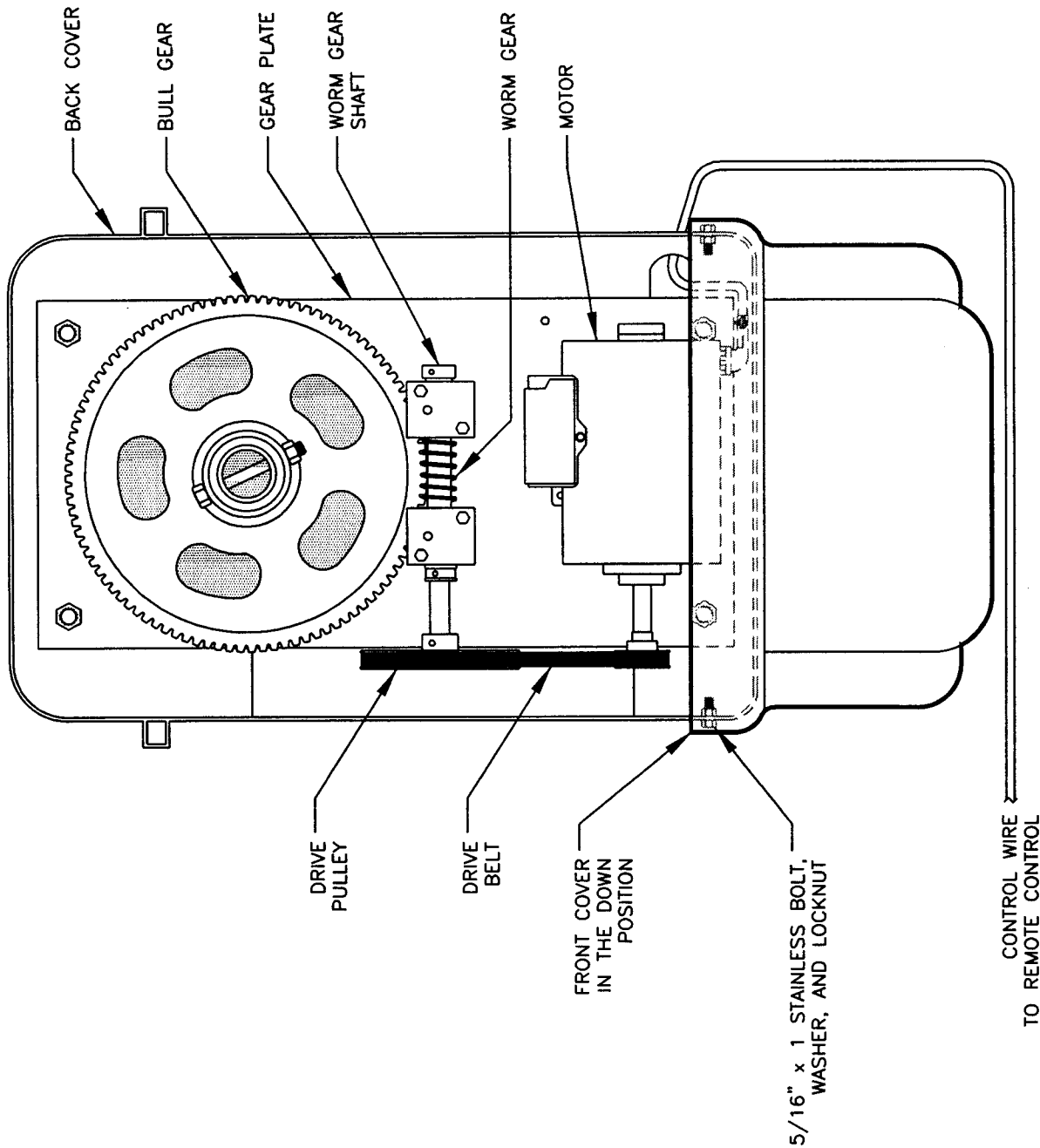


Project: Drum and Motor Mount	
No.: 003	Revision Date:
Scale: None	Date: 08-03-01
	Sheet: 1 of 1

BOAT LIFTS UNLIMITED, INC.

GENERAL NOTES:

1. SEE DRAWING NO. 003 (DRUM AND MOTOR MOUNT) FOR A SIDE VIEW OF MOTOR AND MOTOR HOUSING.

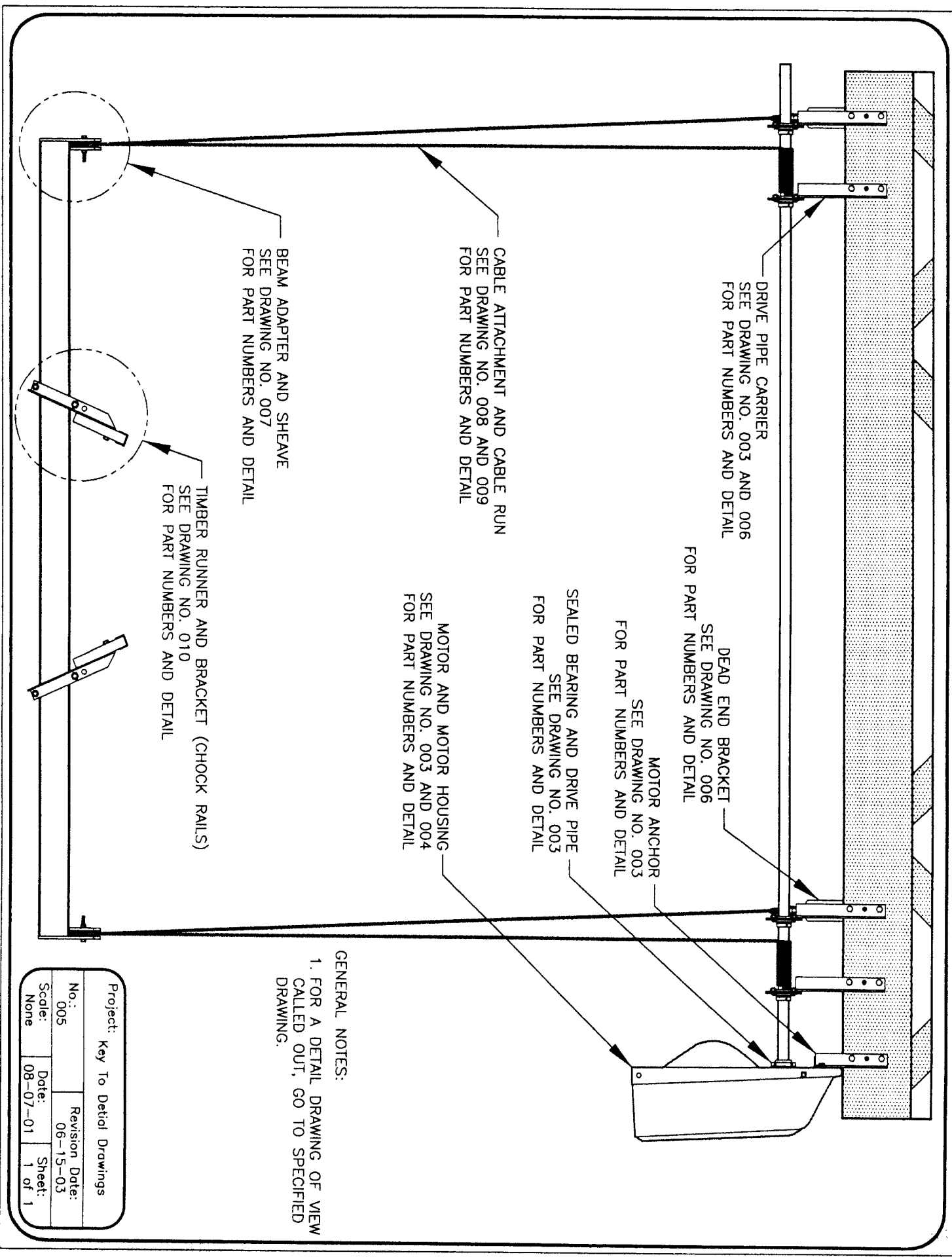


MOTOR HOUSING - FRONT VIEW

(COVER DOWN)

Project: Motor and Motor Housing	
No.: 004	Revision Date:
Scale: None	Date: 08-03-01
	Sheet: 1 of 1

CONTROL WIRE
TO REMOTE CONTROL

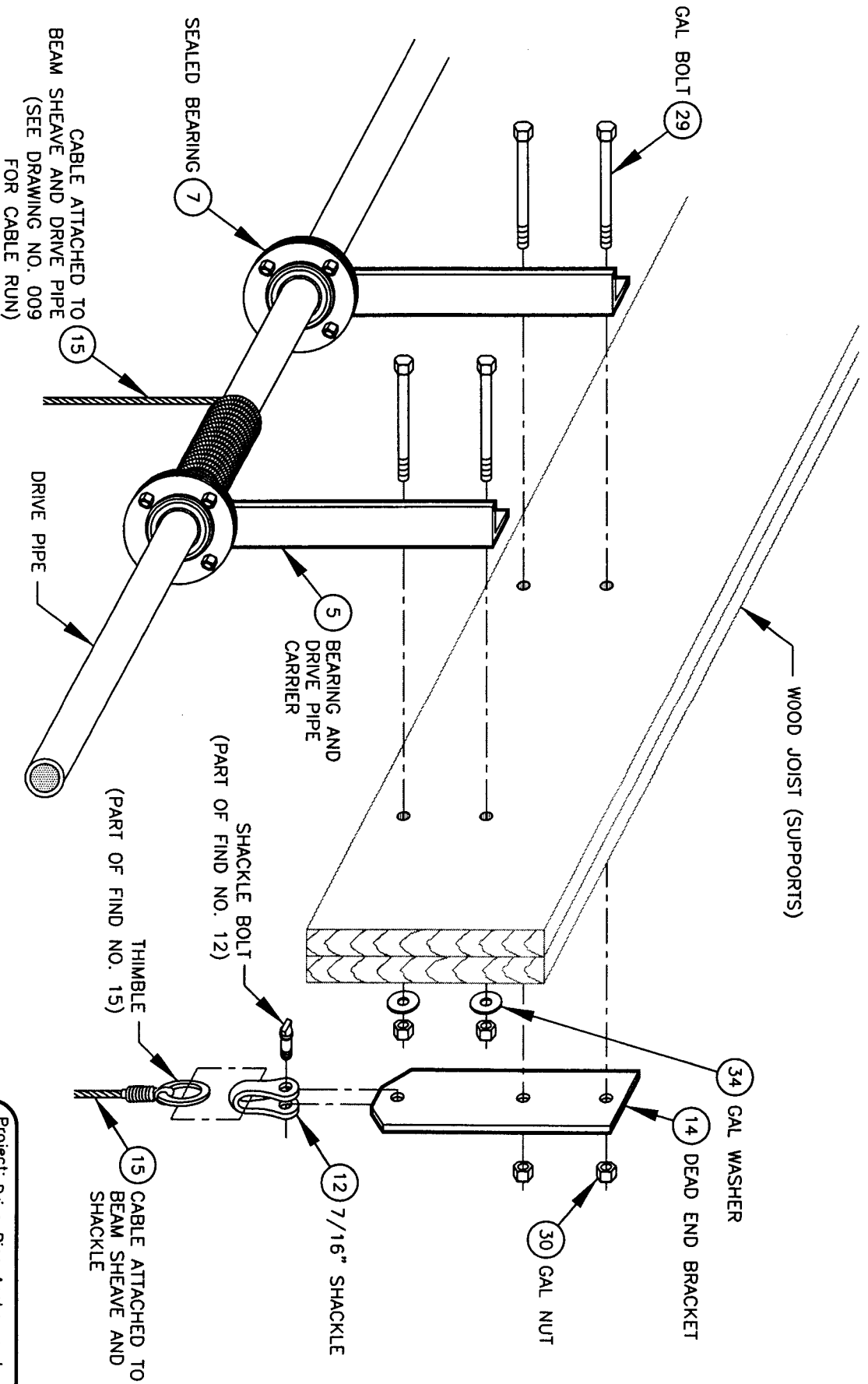


GENERAL NOTES:
 1. FOR A DETAIL DRAWING OF VIEW CALLED OUT, GO TO SPECIFIED DRAWING.

Project: Key To Detail Drawings			
No.:	005	Revision Date:	06-15-03
Scale:	None	Date:	08-07-01
		Sheet:	1 of 1

GENERAL NOTES:

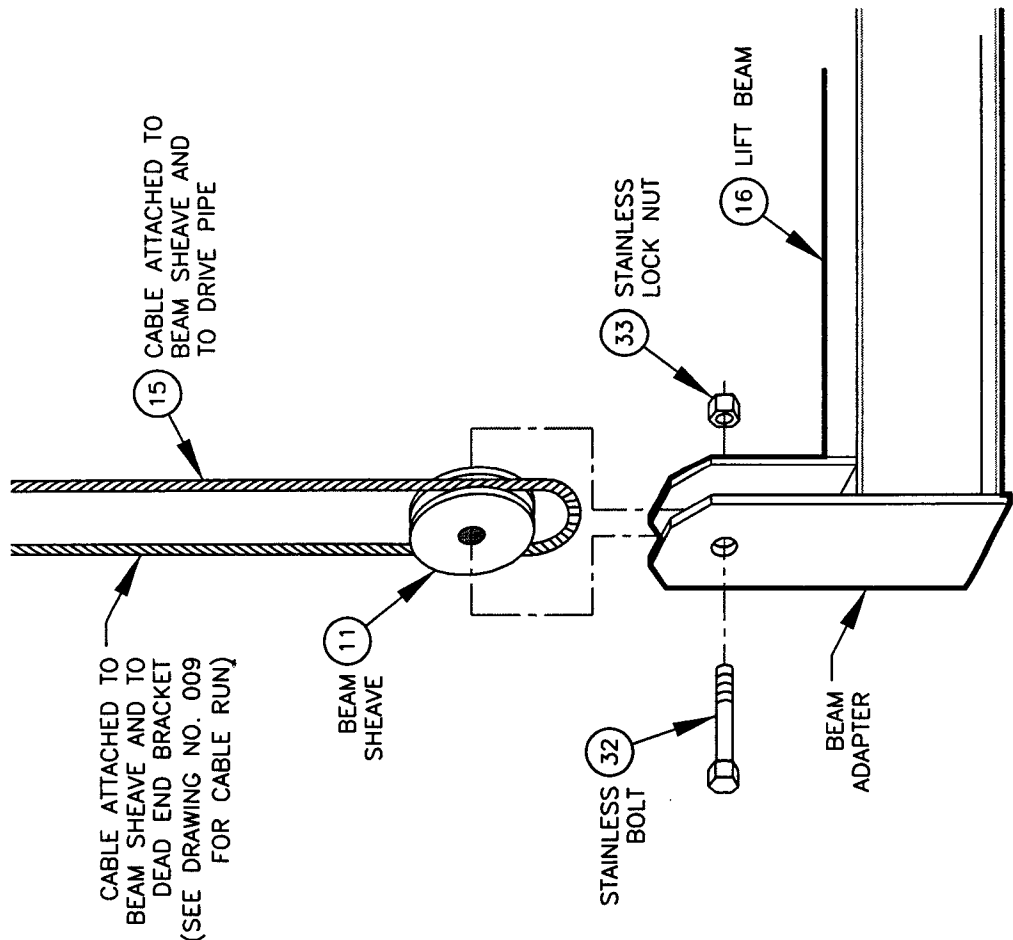
1. FOR LIST OF MATERIALS RELATED TO PART NUMBERS, SEE PARTS LIST.



Project: Drive Pipe Anchor and Dead End Bracket Detail			
No.: 006	Revision:	Date:	Sheet: 1 of 1
Scale: None	Date: 08-06-01	Revision Date:	

GENERAL NOTES:

1. FOR LIST OF MATERIALS RELATED TO PART NUMBERS, SEE PARTS LIST.

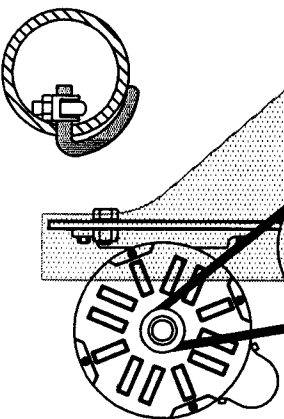
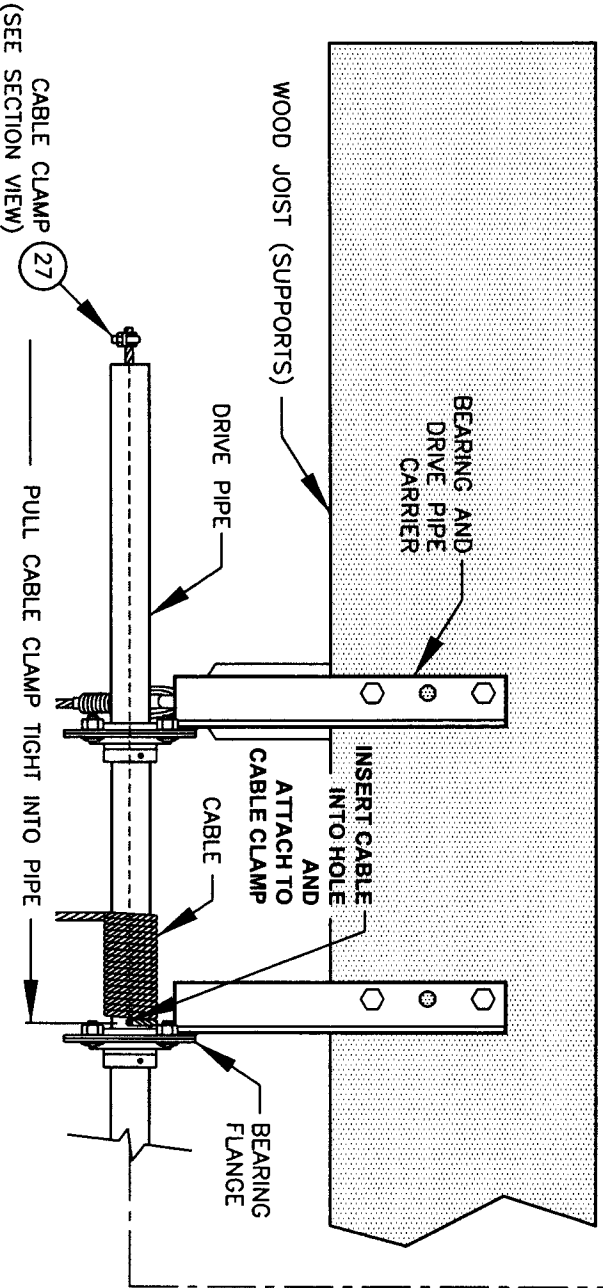
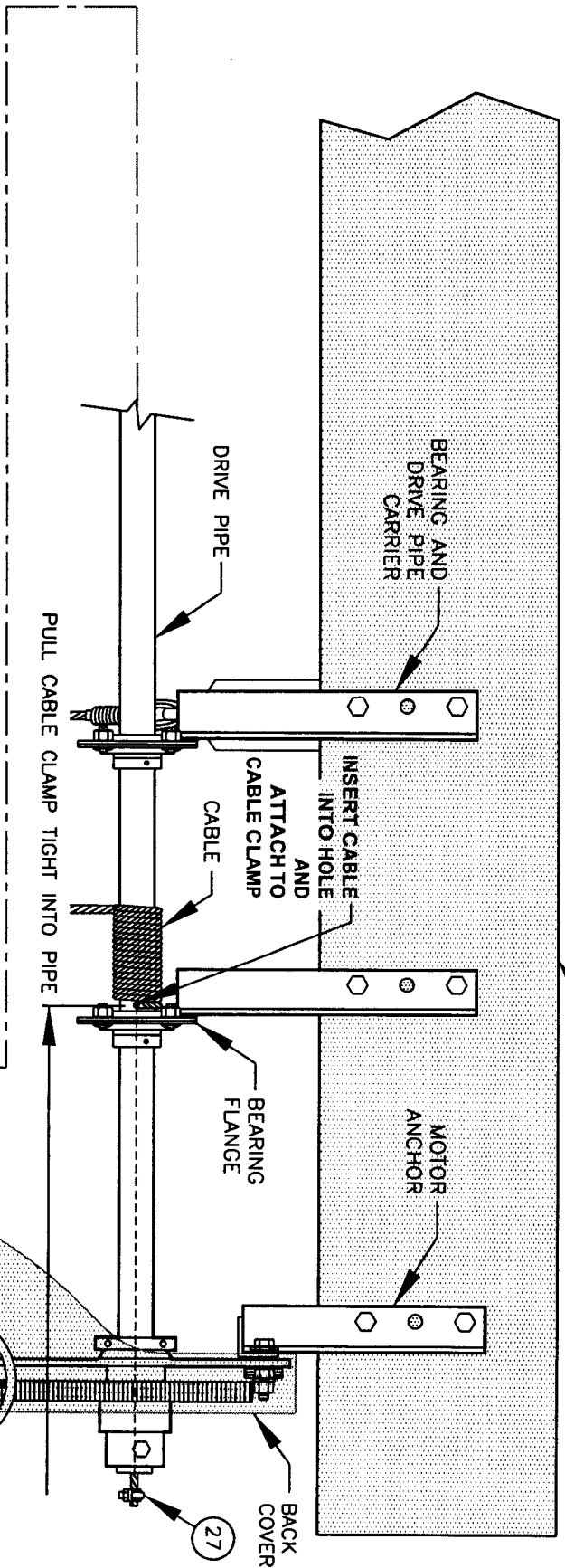


MODEL 8,000

Project: Beam Adapter and Sheave Detail	
No.: 007	Revision Date:
Scale: None	Date: 08-03-01
	Sheet: 1 of 1

GENERAL NOTES:

1. FOR LIST OF MATERIALS RELATED TO PART NUMBERS, SEE PARTS LIST.



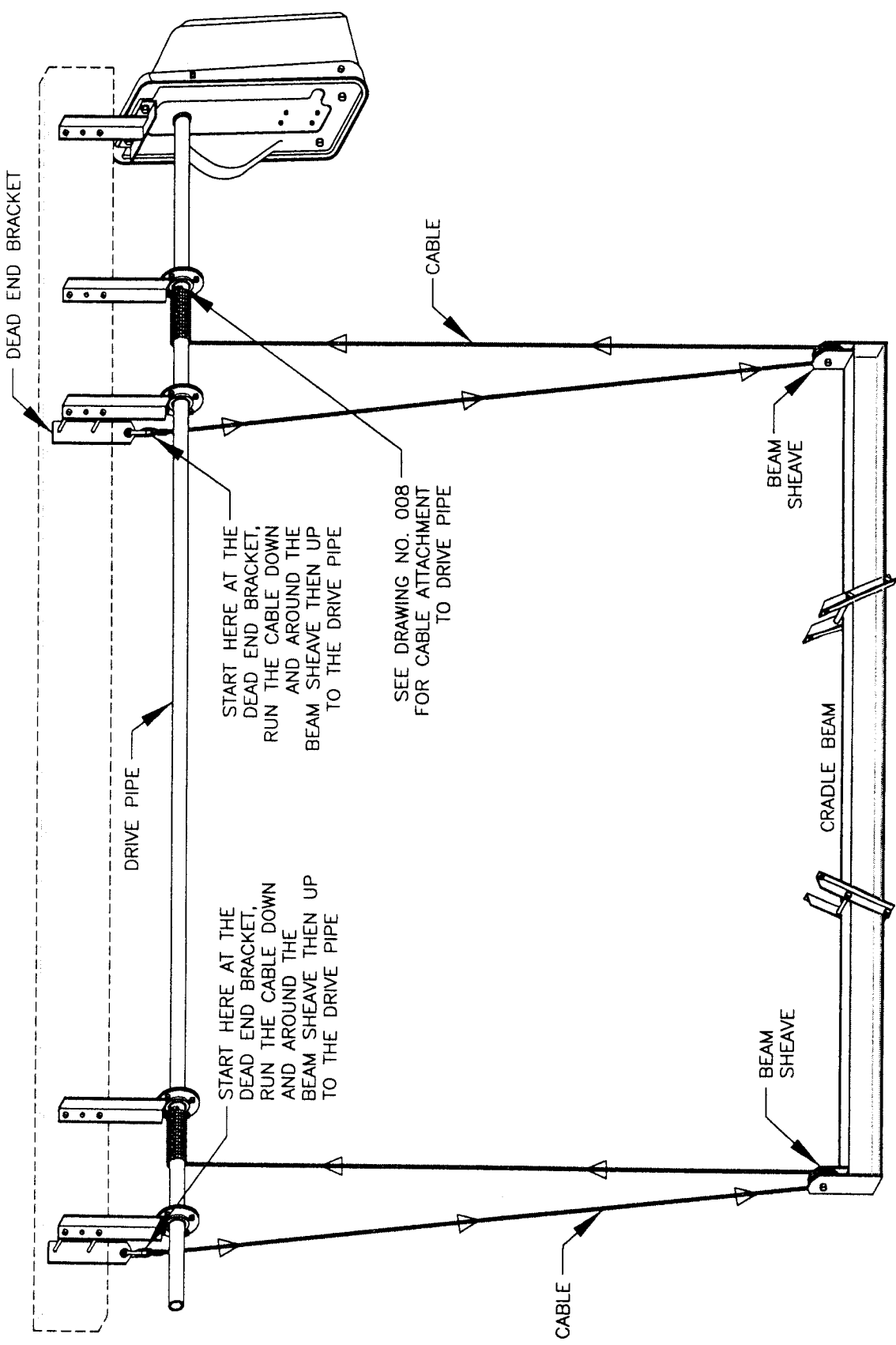
CABLE ATTACHMENT

Project: Cable Connections Assembly Detail and Cable Attachment			
No.: 008	Revision Date:		
Scale: None	Date: 08-06-01	Sheet: 1 of 1	

BOAT LIFTS UNLIMITED, INC.

GENERAL NOTES:

- 1. ENOUGH CABLE IS SUPPLIED WITH THE LIFT TO LOWER THE CRADLE BEAM 15' BELOW THE DRIVE PIPE.
- IF A GREATER AMOUNT OF DROP IS REQUIRED, CALL YOUR LIFT SUPPLIER TO ACQUIRE LONGER CABLES.

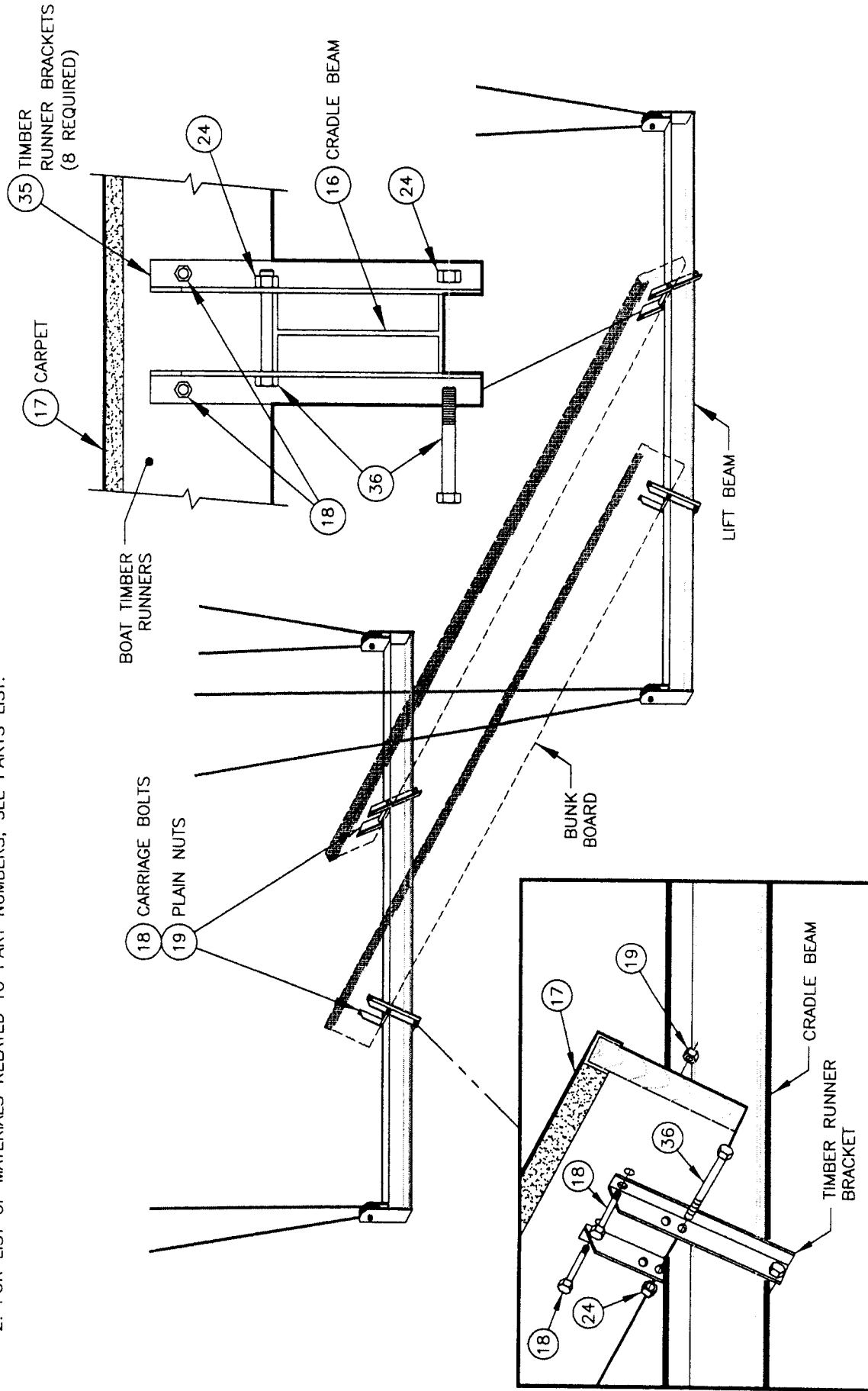


Project: "Boathouse" Model	
Cable Run Detail	
No.: 009	Revision Date: 06-15-03
Scale: None	Date: 08-09-01
Sheet: 1	of 1

BOAT LIFTS UNLIMITED, INC.

GENERAL NOTES:

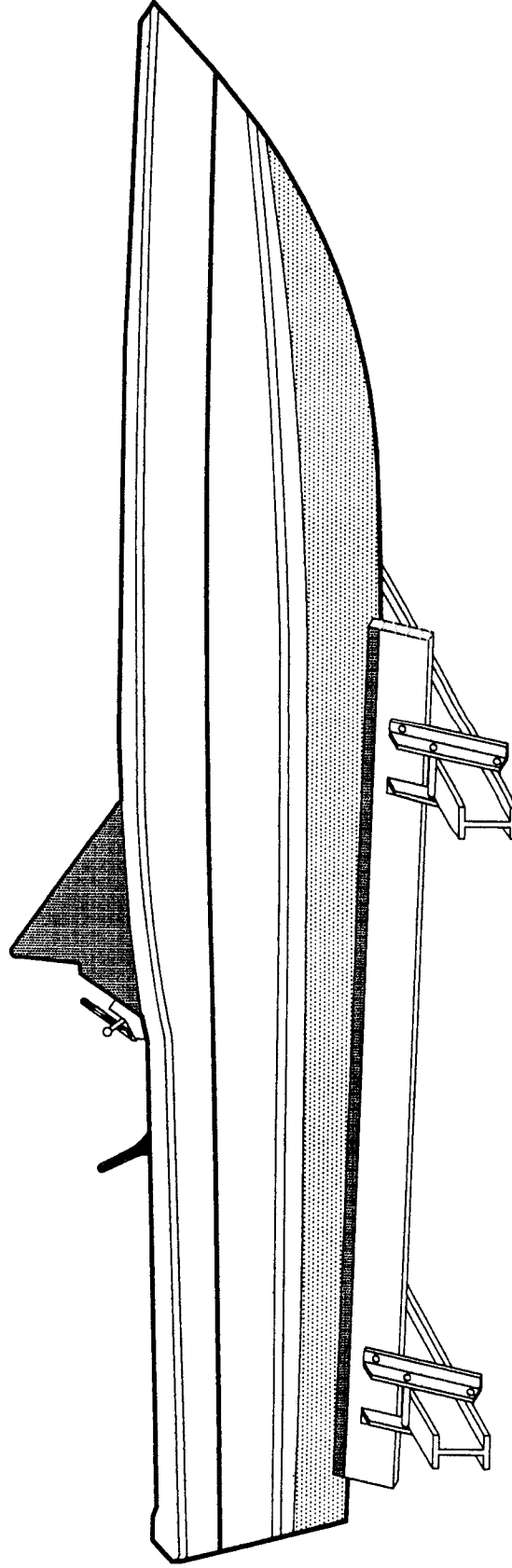
1. BUNK BOARDS, IF NOT SUPPLIED, SHOULD BE 2" x 8" OR 2" x 10" DIMENSIONAL LUMBER.
2. FOR LIST OF MATERIALS RELATED TO PART NUMBERS, SEE PARTS LIST.



Project: Chock Rails Assembly Detail	
No.: 010	Revision Date: 06-15-03
Scale: None	Date: 07-19-01
	Sheet: 1 of 1

GENERAL NOTES:

1. FOR OPTIMUM PERFORMANCE, EQUAL WEIGHT DISTRIBUTION IS REQUIRED OVER BOTH CRADLE ARMS.
2. TO OBTAIN EQUAL WEIGHT DISTRIBUTION:
 - A. USE BALANCE POINT OF BOAT.
 - B. DO NOT USE CENTER OF BOAT LENGTH.



SIDE VIEW OF BOAT

Project: Instructions For	
Weight Distribution	
No.: 011	Revision Date: 06-15-03
Scale: None	Date: 08-03-01
	Sheet: 1 of 1