

MAGNUM

Sidemount

MODEL

INSTALLATION

INSTRUCTIONS

6000 lb, 8,000 lb , 10,000 lb

Boat Lifts Unlimited
Odenton, Maryland
410-674-3100

Prior to installation:

- a). To insure that the lift will operate properly, adequate electricity should be available. Electricity will also be needed to install the lift.
- b). If mounting to pilings, the piles should be driven in the ground to refusal and tied back to the dock or seawall. Otherwise the weight of the boat will pull the piles over.
- c). Seawalls should be tied back to dead men and a solid mounting provided for the seawall mount
- d). obtain any locally required permits.

DO NOT USE ANY POWER TOOLS WHILE STANDING IN THE WATER. IF ELECTRICITY MUST BE USED NEAR THE WATER, INSURE THAT THE CIRCUIT IS PROTECTED BY A GROUND FAULT INTERRUPTER.

- 1.) Install the track in accordance with fig. 005,006. Insure that the track is securely anchored. Piling mounted units should be mounted to piles that are 10" in diameter. If the pile is of a smaller diameter there will be a gap in the pile clamp ring fig 011, item 42 This gap should be shimmed so the collars fit tightly around the pile. If the pile is larger then 10" it should be shaved down. The donkey bar fig. 003, item 8, should be cut to fit incline angle of the track.

- 2.) Install the trolley fig.003 it. 45, by removing the wheel assemblies fig. 003, item 32 from one side of the trolley. Place the trolley on the track and suspend the trolley with a rope or chain to the cable tie off. reinstall the wheel assemblies. Install the cable drum and motor and gear assemblies fig 012. Be sure to install the back cover fig 012 item 16 before installing the drive gear fig.012 item 41 on the drum. The long cord motor should be used on the bow portion of the lift and the short cord motor on the stern portion of the lift. The manual drum switches are designed to be mounted in the cover. There are 6 drill marks in the upper left and right corners of each cover. The center holes should be drilled 3/8" and the four outer holes 3/16". Install the cable fig 012

- 3.) Install the lift arms in accordance with fig 009 install the Arm brace item 11 and the guide pole item 12. The lift arm should be installed so that it is about 4" higher on the outboard tip. This will help compensate for settling of the track and lift parts upon lifting the boat.

- 4.) Install the cross bracing in accordance with fig. 007. The braces need to be fitted and drilled onsite. Install the timber runners fig. 013 . When positioning the runners on the lift, keep the boat as close to the pier as possible. This will make boarding the boat easier as well as reduce the stress on the lift.

IMPORTANT

Lubricate the drive gears before lifting the boat. Failure to do this will result in damage to the gears. The existing grease on the gears is for corrosion prevention only. It is not properly lubricated prior to shipment. Lubricate the gears semi annually thereafter.

Check all nuts and bolts and insure that they are tightened.

Check cables for fraying or damage regularly.

**SIDE MOUNTED 6,000 LB, 8,000 LB, 10,000 LB LIFTS
PARTS LIST**

NO.	TROLLEY ASSEMBLY				QTY
2	TRACKS 14'/16'/18'				2
5	5/8" STAINLESS STEEL SHEAVES				2
6	1/2" SHACKLES				2
8	DONKEY BAR				2
9	DONKEY FEET				2
10	8' CRADLE BEAMS				2
11	LIFT ARM STRAPS				4
12	GUIDE POLES				2
13	GUIDE POLE POSITIONING PLATES				4
15	TIMBER RUNNER KIT				1
16	2 1/2" x 2 1/2" x 3/16" ANGLES, 13' LONG				2
18	RIGHT-HAND COVERS				2
19	SPACER SLEEVES				2
20	CABLE SETS (6,000 LB = 2 x TRACK LENGTH - 8' OF 1/4" WITH NICO & EYE) (8,000 & 10,000 LB = 2 x TRACK LENGTH - 8' OF 5/16" WITH NICO & EYE)				2
21	CABLE DRUMS				2
29	TRACK FEET				2
30	GUIDE POLE ANGLE CLAMPS				4
32	PHONELIC WHEEL ASSEMBLIES (8 ON 6,000 LB AND 8,000 LB/12 ON 10,000 LB)				8/12
33	MOTOR ANCHORS				2
34	8' LONG 2" PVC WITH CAP				2
39	10" PULLEYS				2
40	4L360 BELTS				2
41	AMS 3000, RIGHT-HAND				2
41a	3/4 HP MOTORS (1 LONG CORD & 1 SHORT CORD)				2
45	TROLLEYS (6,000 & 8,000 LB USE 4 LEGS, 10,000 LB USES 6 LEGS)				2
46	ROLLS OF 5" x 14' CARPET				2
47	BOAT RUNNER TIMBERS				2
MOUNTING					
NO.	PILE MOUNTED	QTY	NO.	SEAWALL MOUNTED	QTY
3	SLIDE BRACKETS ASSEMBLY	2	1	SEAWALL MOUNTS	2
3a	SLIDE PLATES ASSEMBLY	2	3/3a	SLIDE BRACKETS ASSEMBLY	4
42	PILING SIDEMOUNT	2	4a	BACK STRAPS 3" TUBE	2
			4b	BACK STRAPS 4" TUBE	2
			41a	SLIDE PLATES ASSEMBLY	4

SIDE MOUNTED LIFTS HARDWARE LOADOUT

NO.	COVER AND MOTOR ANCHOR	QTY
28	1/2"x 1 1/2" GAL HEX BOLTS	8
28a	GAL WASHERS	16
28b	GAL NUTS	10
28c	GAL LOCK WASHERS	4
51	5/16" x 1" S.S. HEX BOLT	4
50	1/2"x 2" GAL HEX BOLTS	2
51a	5/16" S.S. WASHER	4
51b	5/16" S.S. LOCK NUT	4
NO.	DONKEY BAR ASSEMBLY	QTY
26	5/8" x 5 1/2" GAL HEX BOLT GRADE 325	4
26a	5/8" GAL WASHERS GRADE 325	8
26b	5/8" GAL NUT GRADE 325	4
26c	5/8" GAL LOCK WASHERS	4
NO.	GUIDE AND ANGLE CROSS BRACING	QTY
24	1/2" x 6 1/2" GAL HEX BOLT	2
31	1/2" x 4 1/2" GAL HEX BOLT	2
30	1/2" x 5 1/2" GAL HEX BOLT	2
25	1/2" GAL NUTS	11
25a	1/2" GAL LOCK WASHERS	11
25b	1/2" GAL WASHERS	8
22	1/2" x 1 1/2" GAL HEX BOLTS	5
NO.	PILING SIDE MOUNTS	QTY
27	3/4" x 6 1/2" GAL HEX BOLTS GRADE 325	2
27a	3/4" GAL HEX NUTS GRADE 325	2
27b	3/4" GAL WASHERS GRADE 325	4
27c	3/4" GAL LOCK WASHERS	2
37	5/8" x 2" GAL CARRIAGE BOLTS	4
37a	5/8" GAL NUTS	4
37b	5/8" GAL LOCK WASHERS	4

SIDE MOUNTED LIFTS HARDWARE LOADOUT

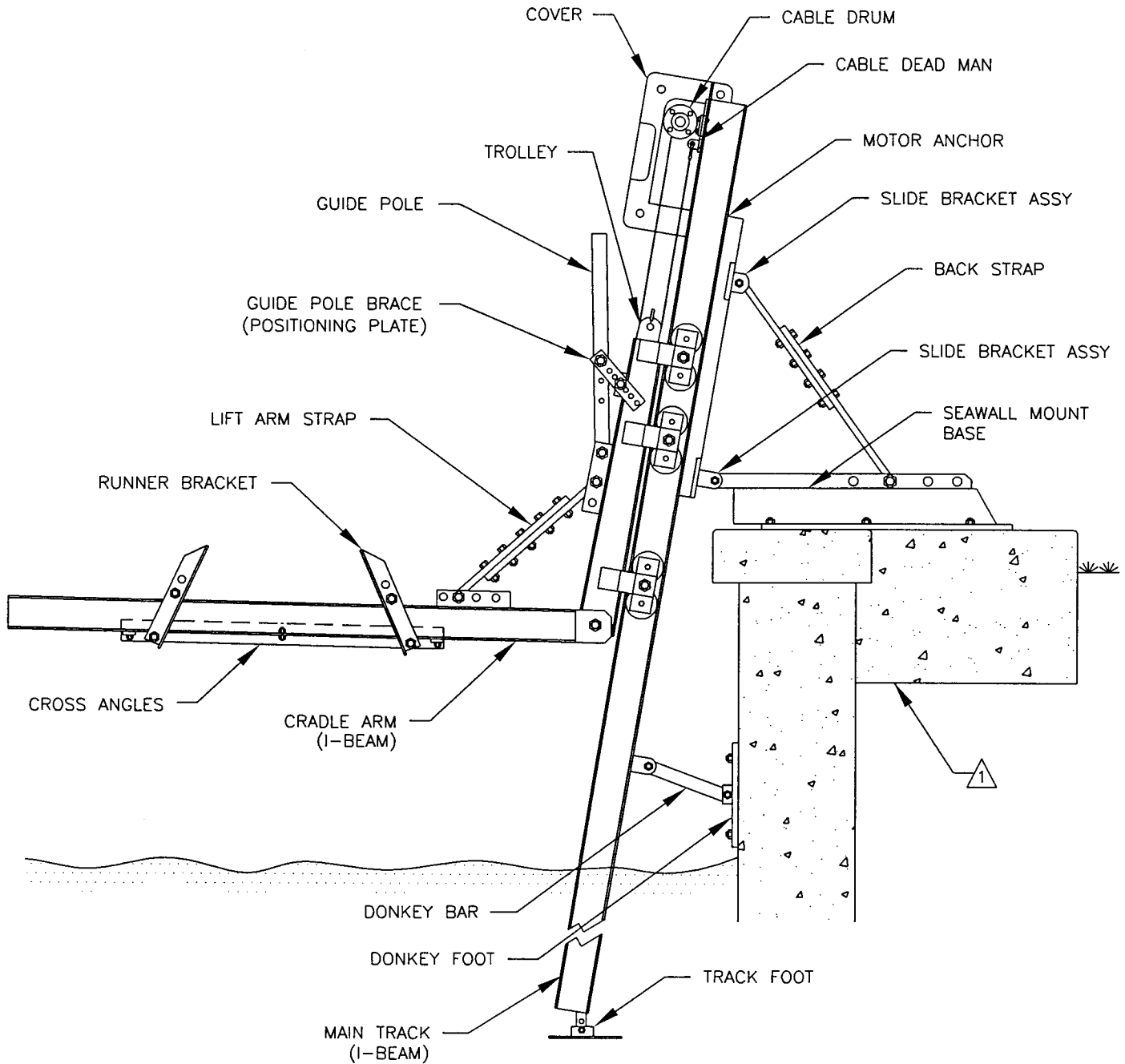
NO.	TROLLEY HARDWARE	QTY
23	5/8" x 3" S.S. HEX BOLT-SHEAVE MOUNT	2
23a	5/8" S.S. HEX NUT-SHEAVE MOUNT	2
27	3/4" x 5 1/2" GAL HEX BOLT GRADE 325	2
27a	3/4" GAL HEX NUT GRADE 325	2
27b	3/4" GAL WASHERS GRADE 325	4
27c	3/4" GAL LOCK WASHERS	2
NO.	WHEEL ASSEMBLIES	QTY
35	3/4" x 2 1/2" GAL HEX BOLT GRADE 325	8/12
35a	3/4" GAL NUTS GRADE 325	8/12
35b	3/4" GAL WASHERS (SPACER)	8/12
35c	3/4" GAL WASHERS GRADE 325	16/24
35d	3/4" GAL LOCK WASHERS	8/12
NO.	LIFT ARM BRACE	QTY
27	3/4" x 6 1/2" GAL HEX BOLT GRADE 325	4
27a	3/4" GAL WASHERS GRADE 325	8
27b	3/4" GAL NUTS GRADE 325	4
27c	3/4" GAL LOCK WASHERS	4
36	1/2" x 2" GAL HEX BOLT GRADE 325	10
36a	1/2" GAL NUTS GRADE 325	10
36b	1/2" GAL WASHERS GRADE 325	20
36c	1/2" GAL LOCK WASHERS	10
NO.	CABLE DRUM	QTY
49	3/16" CABLE CLAMPS	2
22	5/8" x 2" GAL HEX BOLT GRADE 325	8
22a	5/8" GAL NUTS GRADE 325	8
22b	5/8" GAL LOCK WASHERS	8
22c	5/8" GAL WASHERS GRADE 325	16

SIDE MOUNTED LIFTS HARDWARE LOADOUT

SIDE MOUNTED LIFTS HARDWARE LOADOUT		
NO.	PILING SIDE MOUNTS (CONTINUED)	QTY
52	3/4" x 12" GAL HEX BOLTS	4
52a	3/4" GAL HEX NUTS	4
52b	3/4" GAL WASHERS	4
53	5/8" x 6" GAL CARRIAGE BOLTS	8
53a	5/8" GAL WASHERS	8
NO.	SEAWALL MOUNT BASE WITH BACK STRAP AND 4 SLIDES	QTY
38	3/4" x 5 1/2" GAL HEX BOLT GRADE 325	2
27	3/4" x 6 1/2" GAL HEX BOLT GRADE 325	4
38a/27a	3/4" GAL NUT GRADE 325	6
38b/27b	3/4" GAL WASHER GRADE 325	12
37a	5/8" GAL NUT	8
37	5/8" x 2" GAL CARRIAGE BOLT	8
37b	5/8" GAL LOCK WASHER	8
38c/27c	3/4" GAL LOCK WASHER	6
36	1/2" x 2" GAL HEX BOLT GRADE 325	8
36a	1/2" GAL NUT GRADE 325	8
36b	1/2" GAL WASHER GRADE 325	16
36c	1/2" GAL LOCK WASHER	8
NO.	TIMBER RUNNER BOLT PAK	QTY
43	1/2" x 5 1/2" GAL HEX BOLTS	8
43a	1/2" GAL NUTS	8
44	3/8" x 3 1/2" GAL CARRIAGE BOLTS	8
44a	3/8" GAL NUTS	8

GENERAL NOTES:

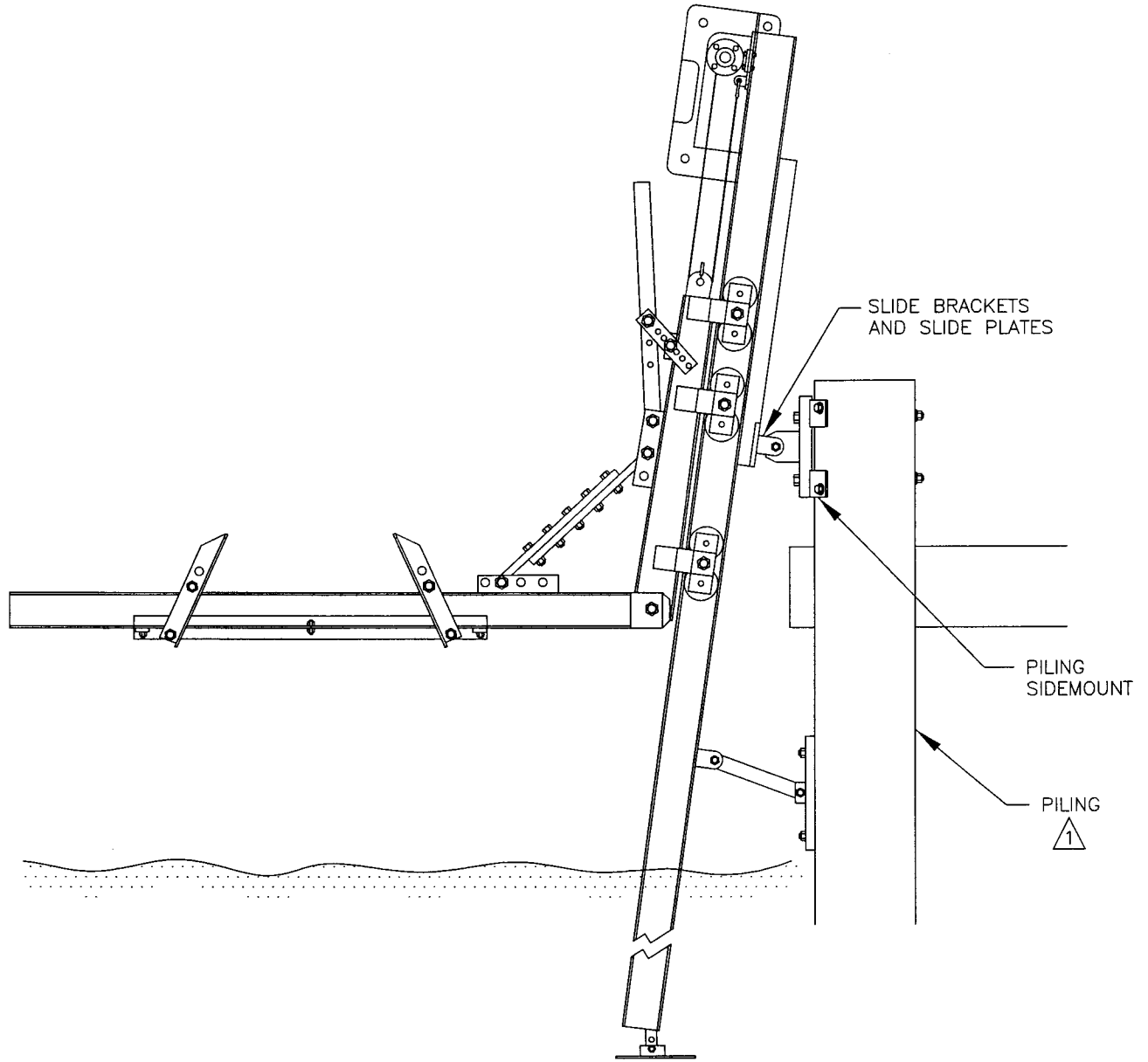
⚠ CONCRETE BASE PADS INSTALLED ACCORDING TO LOCAL CODES AND LAND CONDITIONS.



Project: Assembly Drawing		
Part Names		
No.: 001	Revision Date:	
Scale: None	Date: 04-11-00	Sheet: 1 of 1

GENERAL NOTES:

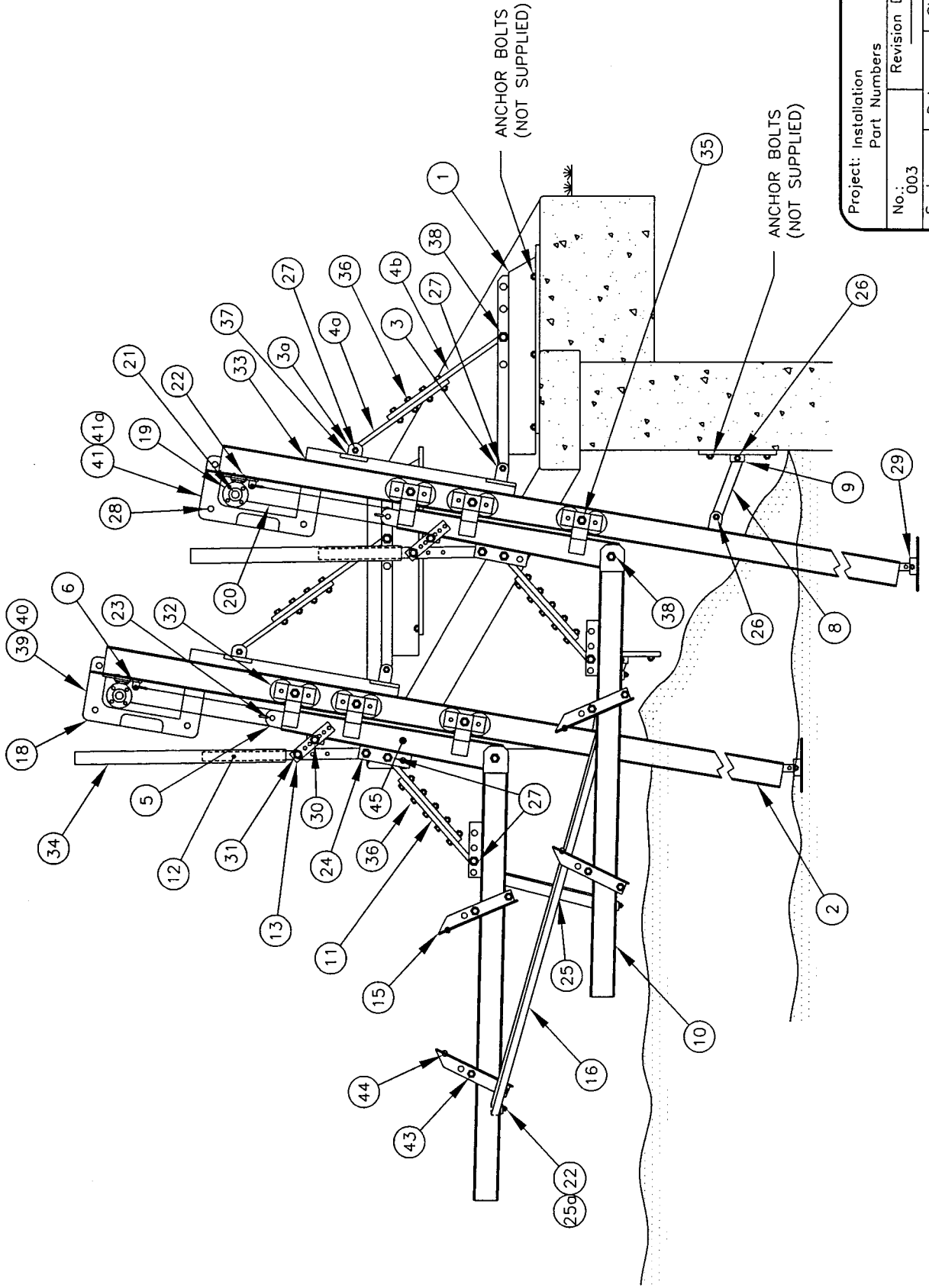
1 PILINGS MUST BE SECURELY ANCHORED TO DEAD MEN BEHIND A SEA WALL OR A BRACED DOCK.



Project: Assembly Drawing Piling Mount		
No.: 002	Revision Date: 01-18-04	
Scale: None	Date: 04-11-00	Sheet: 1 of 1

GENERAL NOTES:

- 1. FOR LIST OF MATERIALS RELATED TO PART NUMBERS, SEE PARTS LIST.
- 2. PART NUMBERS 1, 3a, 4, 23, AND 27 ARE NOT USED WITH A PILING MOUNT.

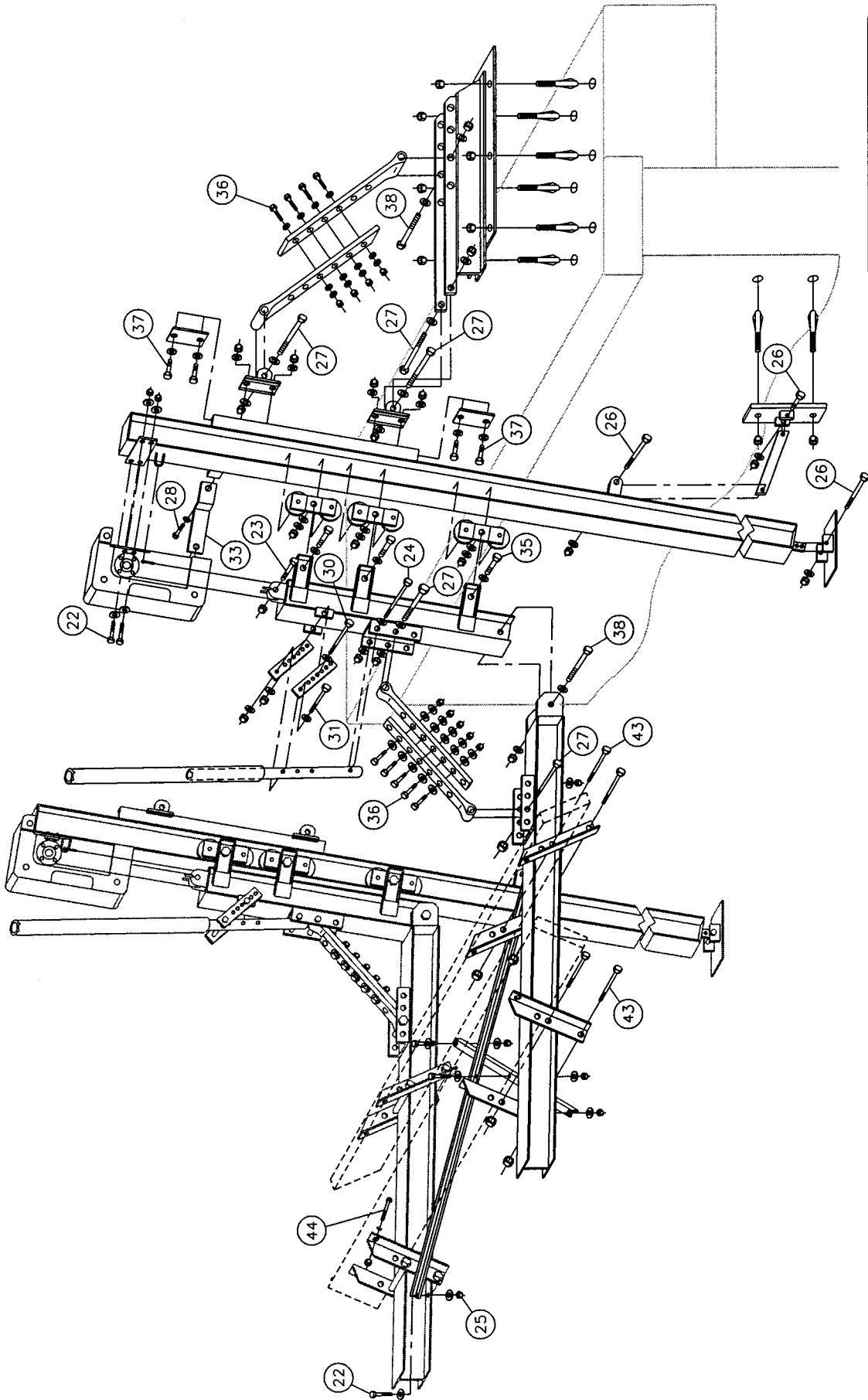


Project: Installation	
Part Numbers	
No.: 003	Revision Date:
Scale: None	Date: 04-11-00
Sheet: 1 of 1	

BOAT LIFTS UNLIMITED, INC.

GENERAL NOTES:

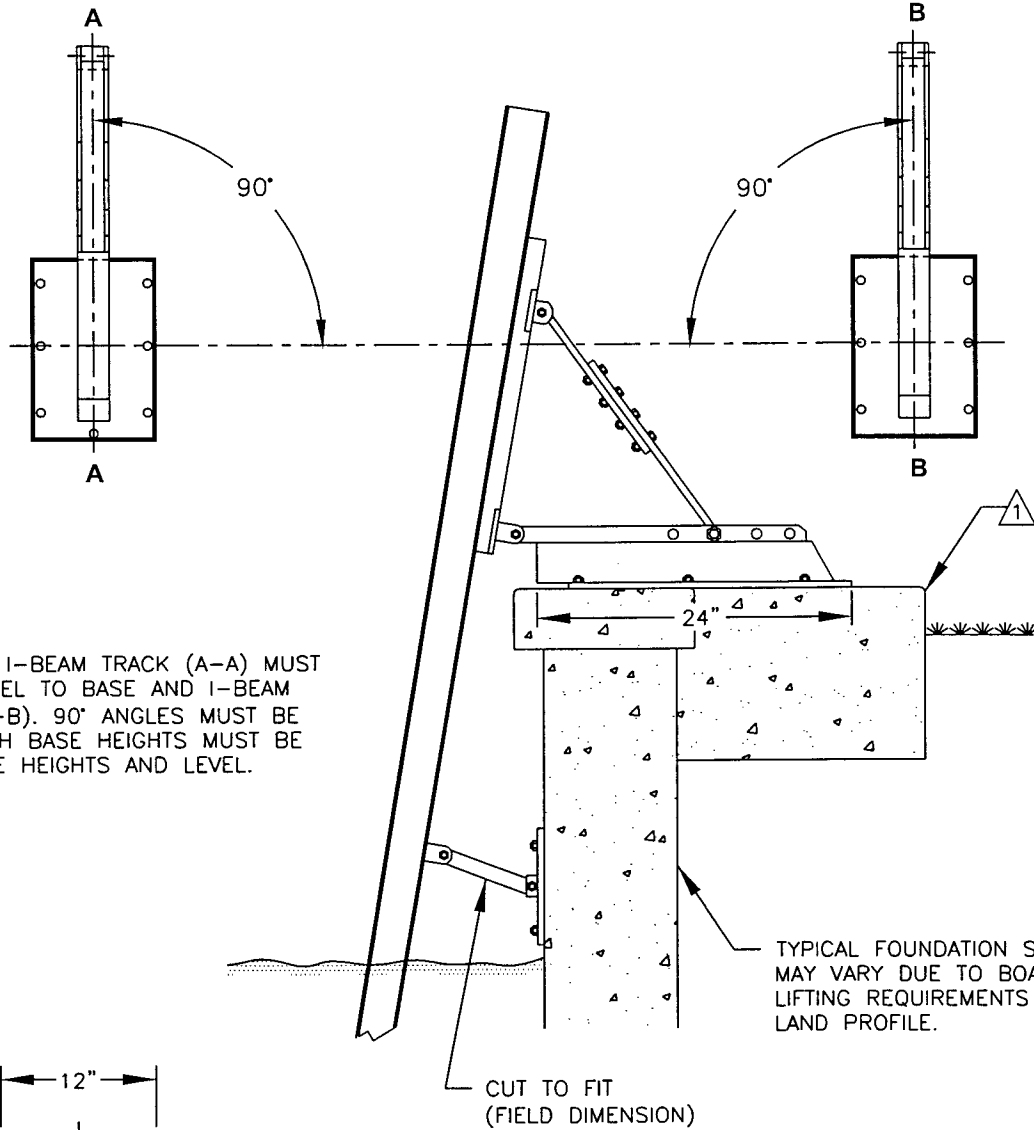
- 1. FOR LIST OF MATERIALS RELATED TO PART NUMBERS, SEE PARTS LIST.



Project: Exploded View	
No: 004	Revision Date:
Scale: None	Date: 04-11-00
	Sheet: 1 of 1

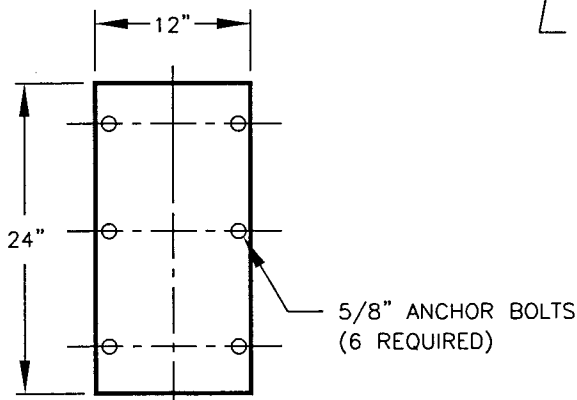
GENERAL NOTES:

1 CONCRETE BASE PADS INSTALLED ACCORDING TO LOCAL CODES AND LAND CONDITIONS.



CAUTION

BASE AND I-BEAM TRACK (A-A) MUST BE PARALLEL TO BASE AND I-BEAM TRACK (B-B). 90° ANGLES MUST BE HELD, BOTH BASE HEIGHTS MUST BE HELD SAME HEIGHTS AND LEVEL.

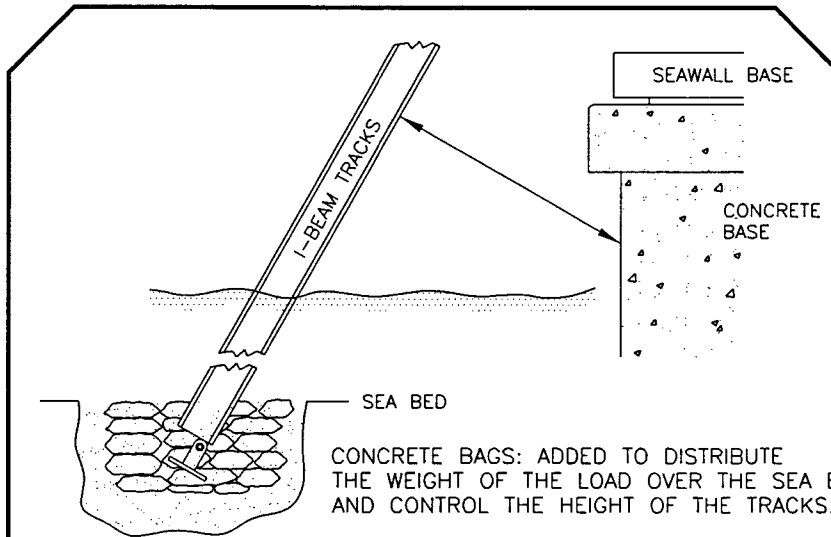


BASE BOLT PATTERN
(SCALE: NONE)

Project: Base Installation		
No.: 005	Revision Date:	
Scale: None	Date: 04-11-00	Sheet: 1 of 1

GENERAL NOTES:

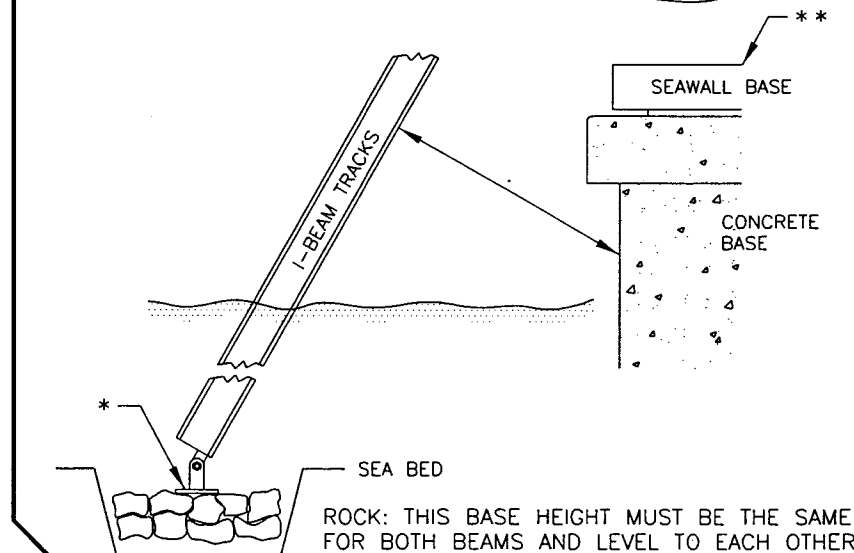
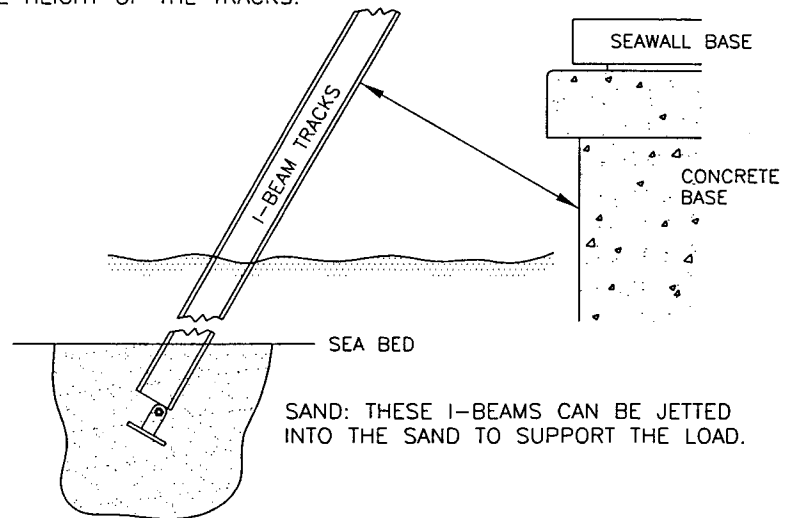
1. ILLUSTRATED BELOW ARE SOME TECHNIQUES USED TO INSURE A FIRM SUPPORT OF THE I-BEAM TRACK.



CAUTION

THE SEAWALL I-BEAM TRACK MUST BE FIRMLY SUPPORTED ON THE SEA BED. ANY SHIFTING OR SINKING OF THE TRACK WILL ADVERSELY AFFECT THE SAFETY AND OPERATION OF THE LIFT.

* THE TRACK FOOT COMES WITH A 7" x 9 1/2" PLATE.

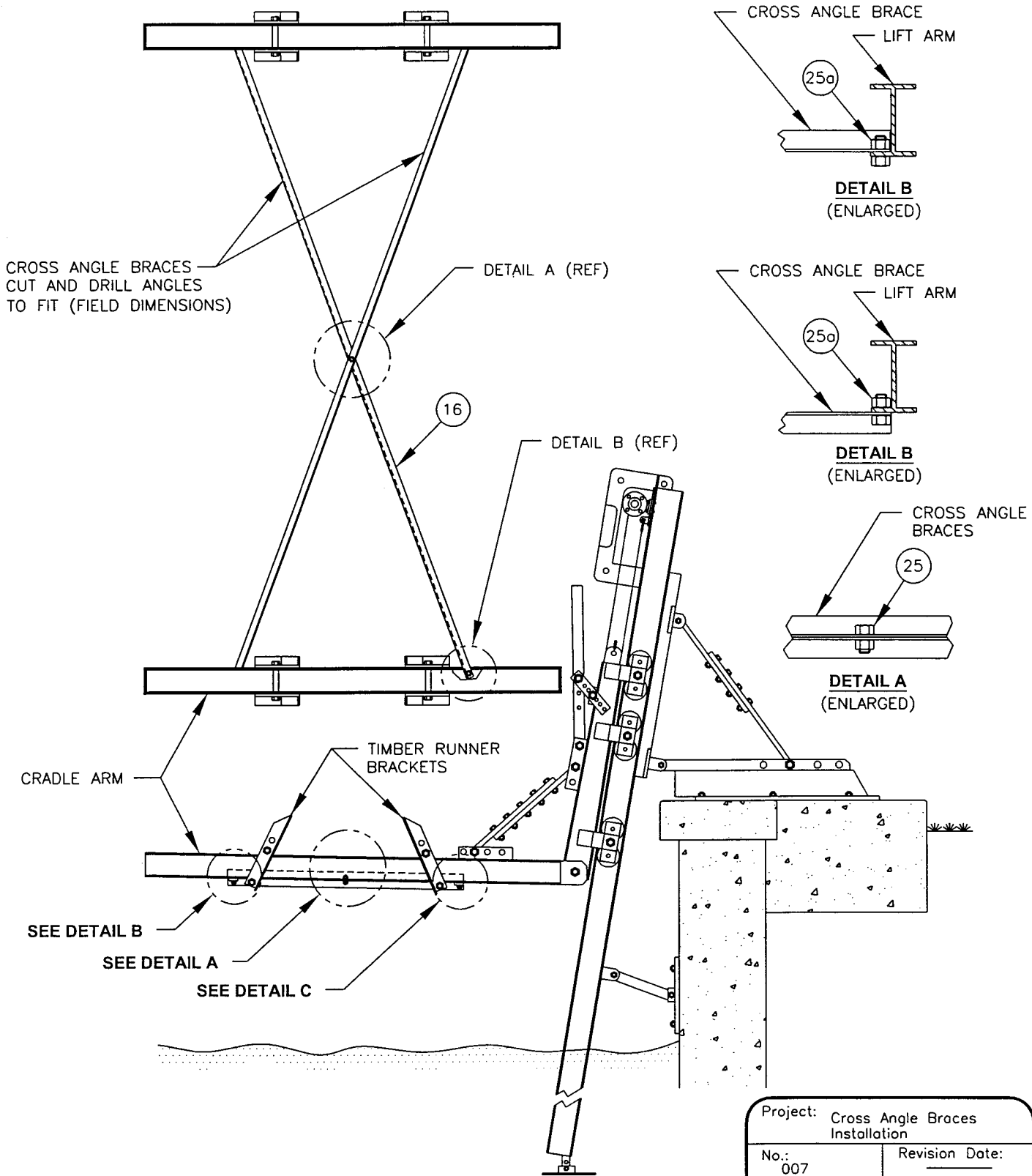


** SEAWALL BASE SHOWN BUT SAME TECHNIQUES CAN BE USED FOR PILING MOUNT.

Project: I-Beam Support Installation		
No.: 006	Revision Date:	
Scale: None	Date: 04-11-00	Sheet: 1 of 1

GENERAL NOTES:

1. ATTACH TIMBER RUNNER BRACKETS AND CROSS ANGLE BRACES TO CRADLE ARMS.

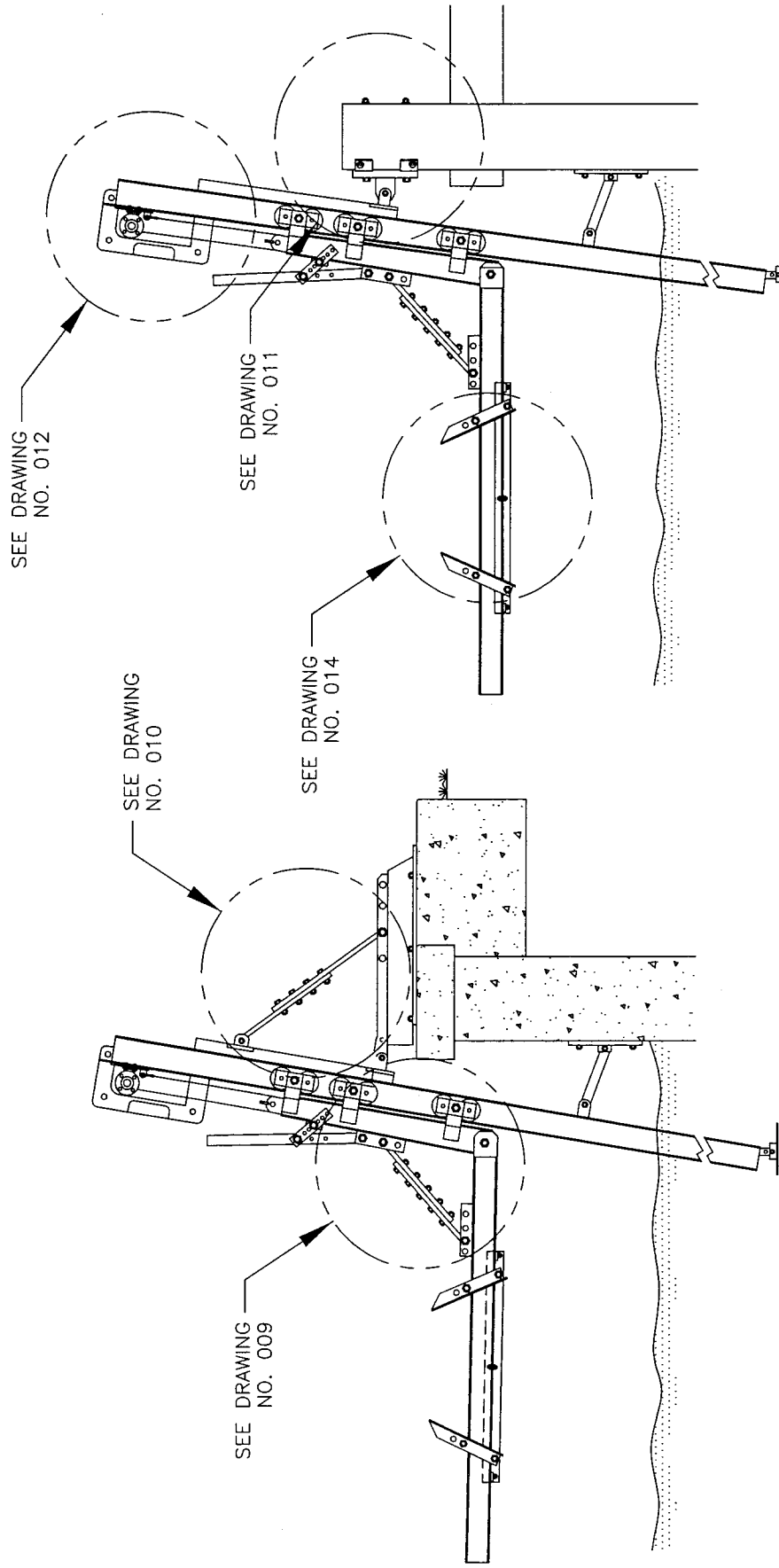


Project: Cross Angle Braces Installation		
No.: 007	Revision Date:	
Scale: None	Date: 04-11-00	Sheet: 1 of 1

BOAT LIFTS UNLIMITED, INC.

GENERAL NOTES:

- 1. FOR A DETAIL DRAWING OF VIEW CALLED OUT, GO TO SPECIFIED DRAWING.



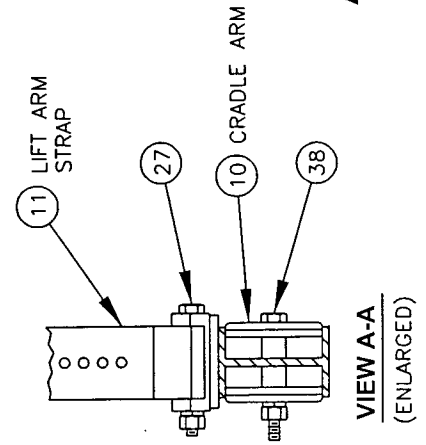
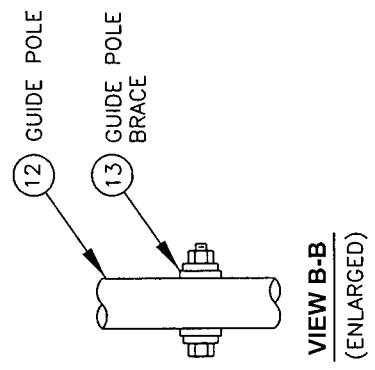
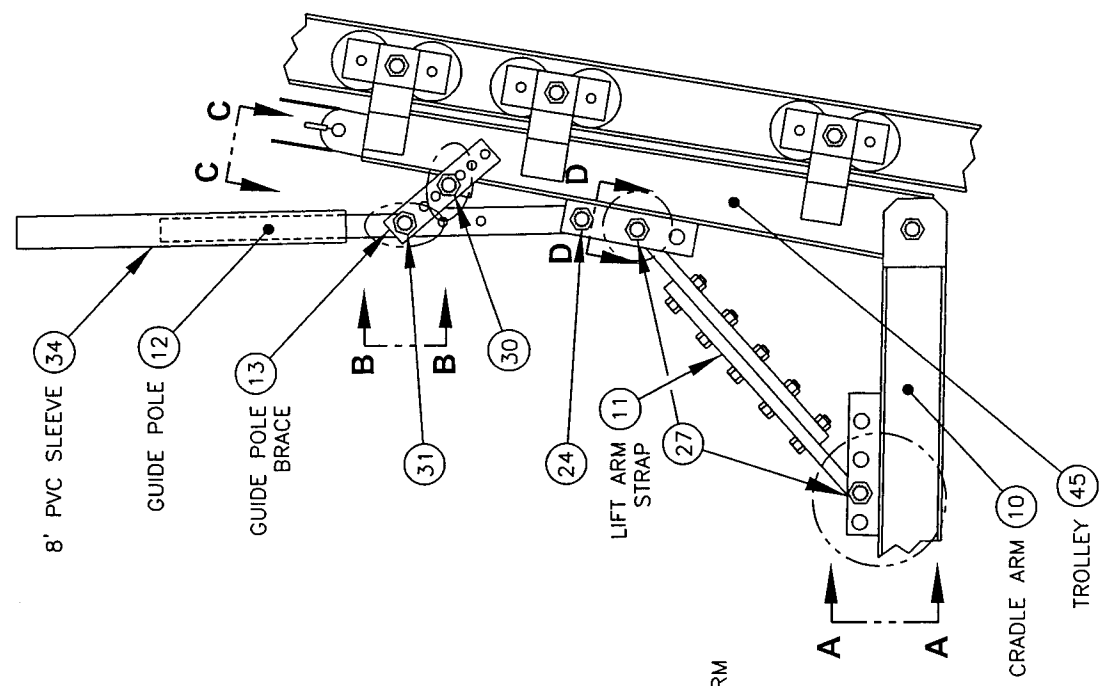
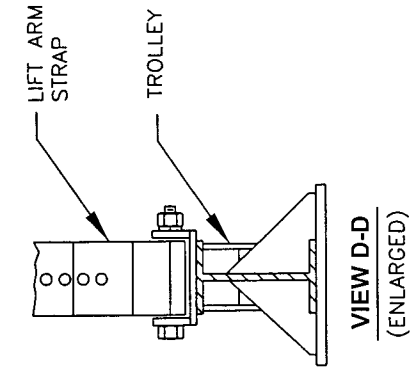
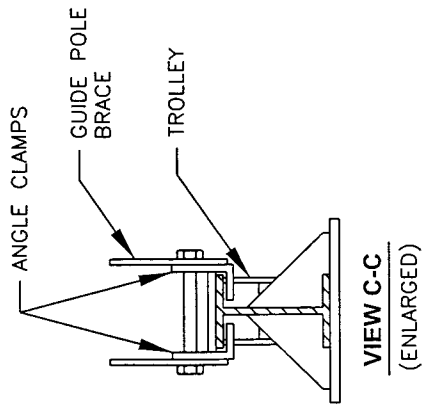
Project: Key To Detail Drawings

No.:	008	Revision Date:	01-18-04
Scale:	None	Date:	04-11-00
		Sheet:	1 of 1

BOAT LIFTS UNLIMITED, INC.

GENERAL NOTES:

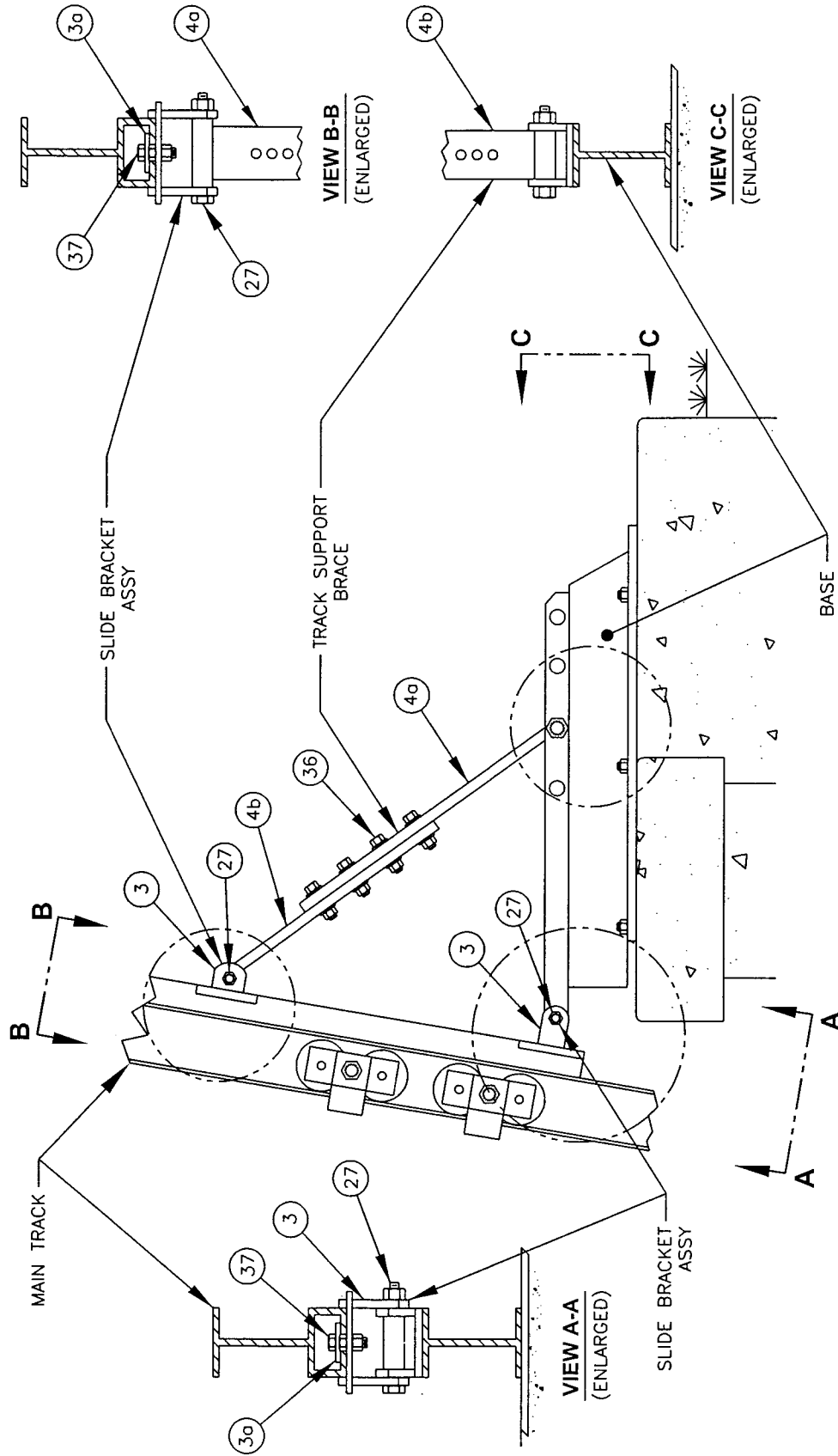
1. ATTACH TROLLEY TO CRADLE ARM (SEE VIEW A-A).
2. ATTACH CRADLE ARM BRACE TO CRADLE ARM (SEE VIEW A-A).
3. ATTACH CRADLE ARM BRACE (SEE VIEW D-D) AND GUIDE PIPE BRACE (SEE VIEW C-C) TO TROLLEY.
4. ATTACH GUIDE PIPE TO GUIDE PIPE BRACE (SEE VIEW B-B).



Project: Cradle Arm and Guide Pipe Brace Detail	
No.: 009	Revision Date:
Scale: None	Date: 04-11-00
Sheet: 1	of 1

GENERAL NOTES:

1. ATTACH SLIDE BRACKET ASSY TO MAIN TRACK AND TRACK SUPPORT BRACE (SEE VIEWS A-A AND B-B).
2. ATTACH BASE TO SLIDE BRACKET ASSY AND TRACK SUPPORT BRACE (SEE VIEWS A-A AND C-C).

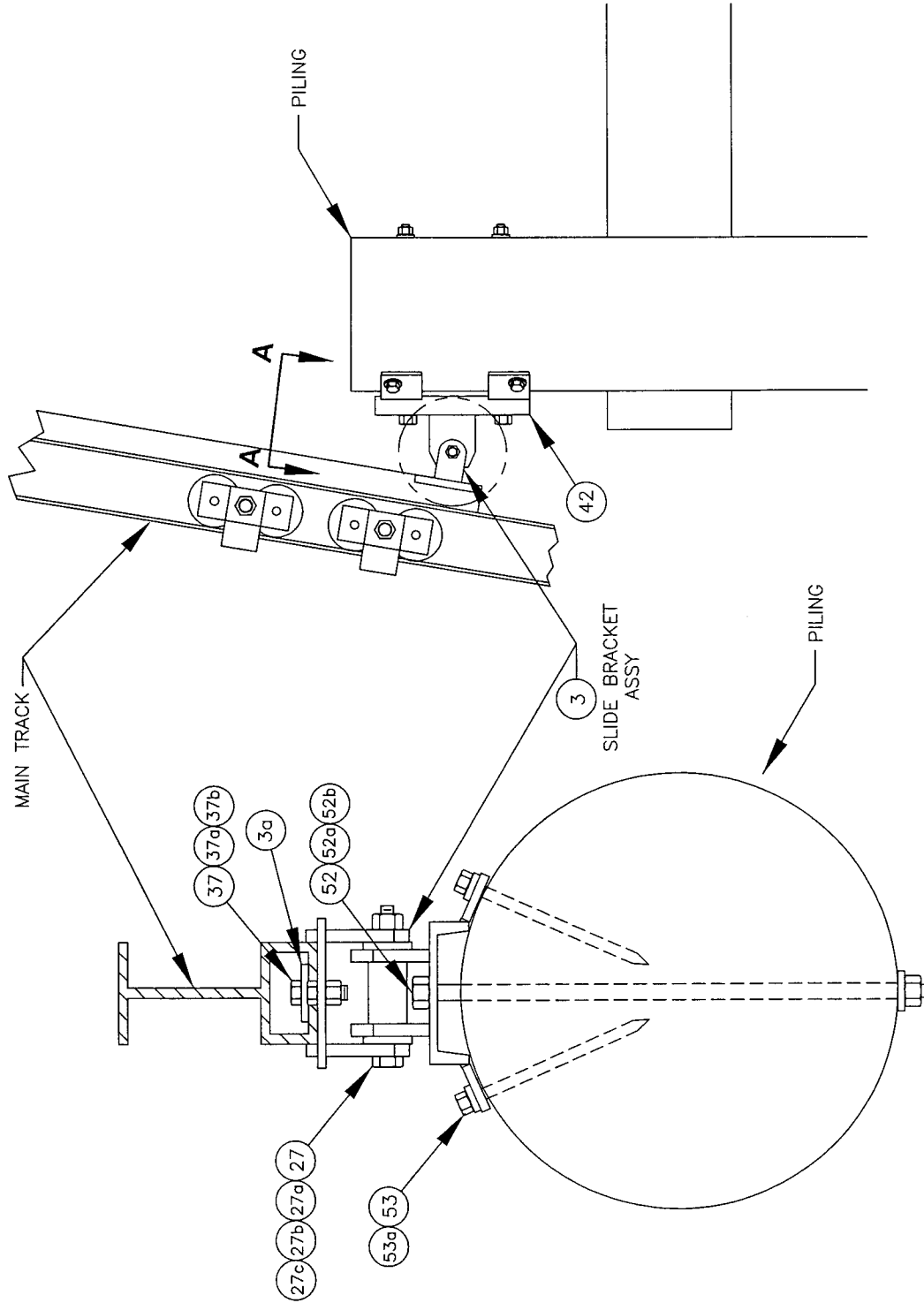


Project: Base Mount and Track Support Brace Assembly Detail	
No.: 010	Revision Date:
Scale: None	Date: 04-11-00
	Sheet: 1 of 1

BOAT LIFTS UNLIMITED, INC.

GENERAL NOTES:

1. ATTACH SLIDE BRACKET ASSY TO PILING MOUNT (SEE VIEW A-A).
2. ATTACH PILING MOUNT TO PILING (SEE VIEW B-B).



VIEW A-A

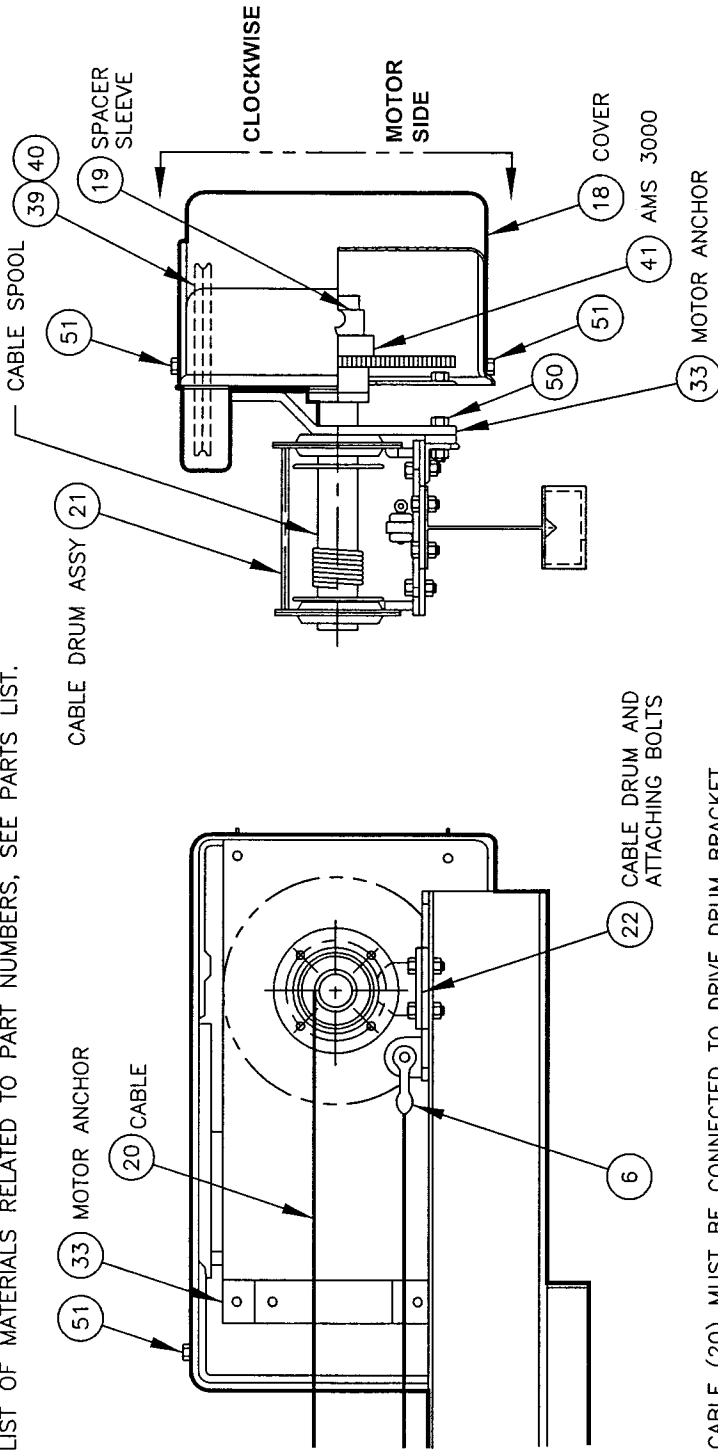
(ENLARGED-NOT TO SCALE)

Project: Piling Mount Assembly Detail	
No.: 011	Revision Date: 01-18-04
Scale: None	Date: 04-11-00
	Sheet: 1 of 1

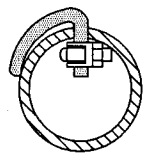
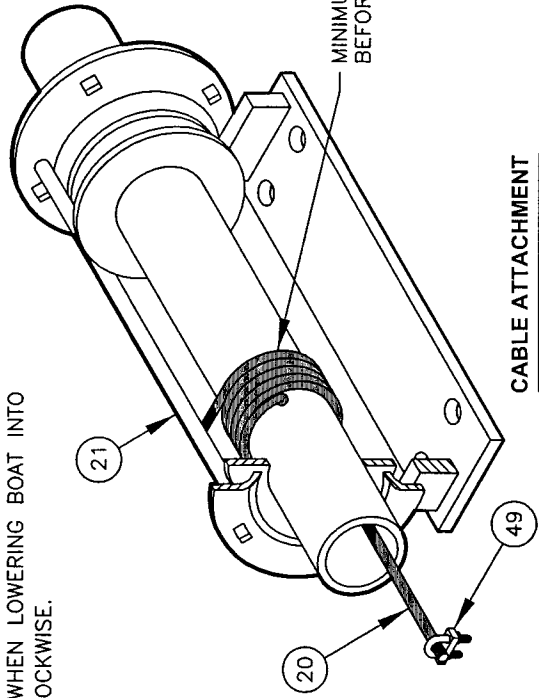
BOAT LIFTS UNLIMITED, INC.

GENERAL NOTES:

- FOR LIST OF MATERIALS RELATED TO PART NUMBERS, SEE PARTS LIST.



CAUTION
 ENDS OF CABLE (20) MUST BE CONNECTED TO DRIVE DRUM BRACKET LOOP (6) AND DRIVE DRUM (22) SO THAT, WHEN LOWERING BOAT INTO WATER, THE BULL GEAR TURNS COUNTER CLOCKWISE.



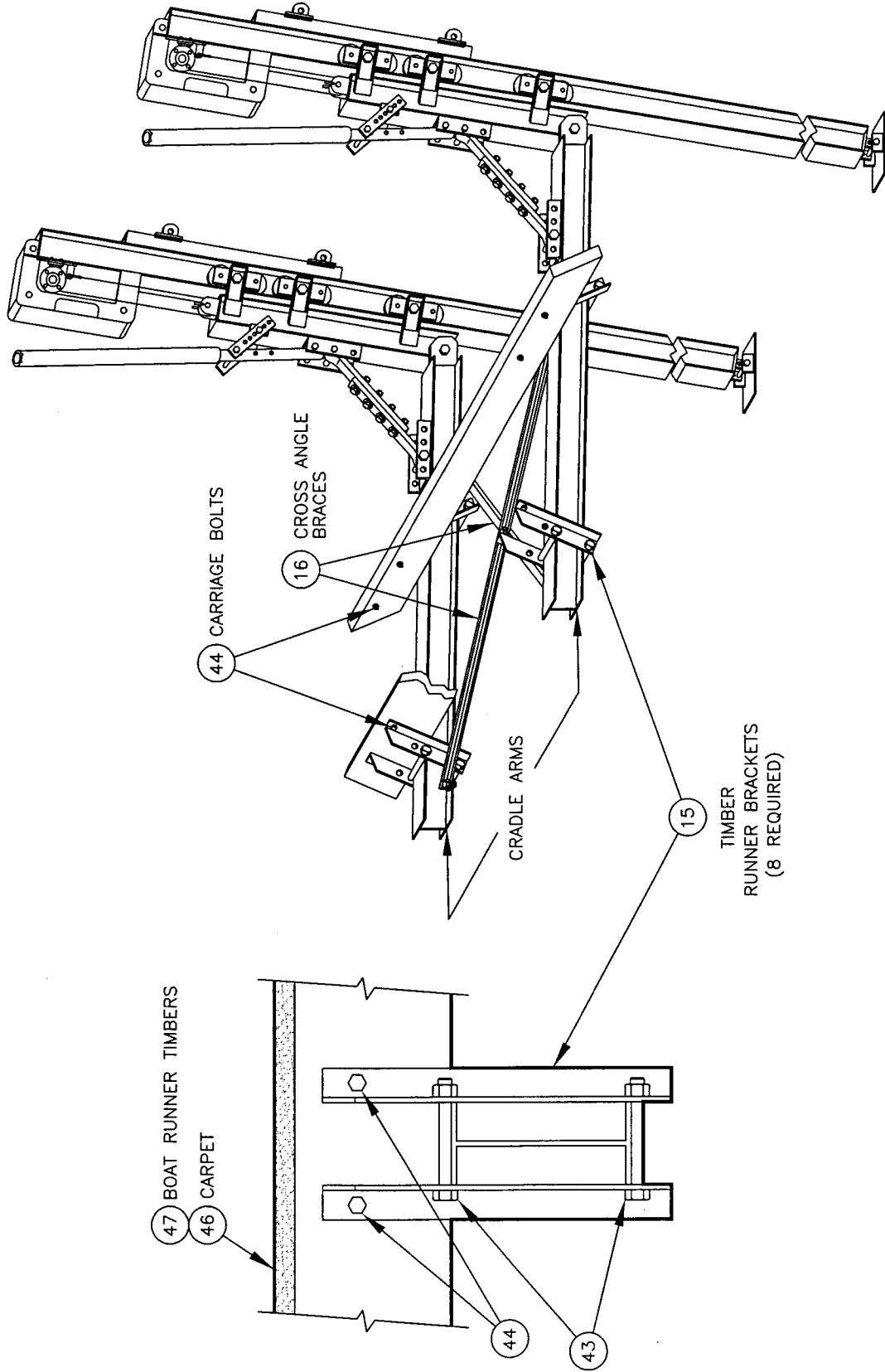
SECTION VIEW
 CABLE CLAMP IS PULLED TIGHT INTO DRIVE PIPE

Project: Cable Connections Assembly Detail and Cable Attachment	
No.: 012	Revision Date:
Scale: None	Date: 04-11-00
	Sheet: 1 of 1

BOAT LIFTS UNLIMITED, INC.

GENERAL NOTES:

1. FOR LIST OF MATERIALS RELATED TO PART NUMBERS, SEE PARTS LIST.

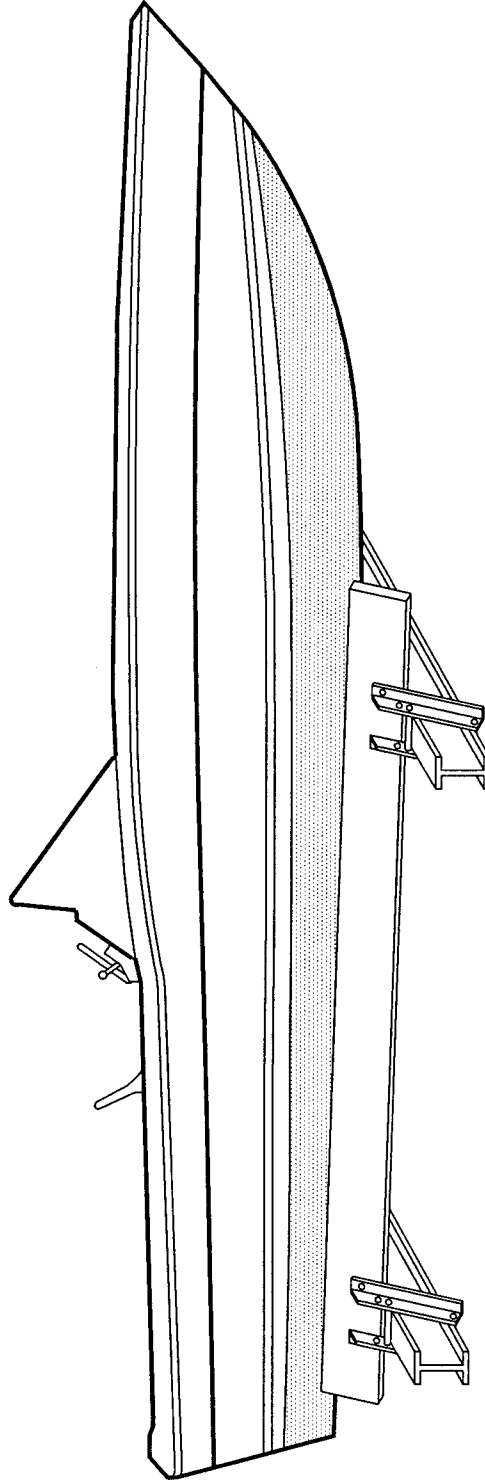


Project: Chock Rails Assembly Detail	
No.: 013	Revision Date:
Scale: None	Date: 04-11-00
	Sheet: 1 of 1

BOAT LIFTS UNLIMITED, INC.

GENERAL NOTES:

1. FOR OPTIMUM PERFORMANCE, EQUAL WEIGHT DISTRIBUTION IS REQUIRED OVER BOTH CRADLE ARMS.
2. TO OBTAIN EQUAL WEIGHT DISTRIBUTION:
 - A. USE BALANCE POINT OF BOAT.
 - B. DO NOT USE CENTER OF BOAT LENGTH.
3. POSITION THE BOAT IN THE LIFT AS CLOSE TO THE TRACK AS POSSIBLE.



Project: Instructions For			
Weight Distribution			
No.:	014	Revision Date:	
Scale:	None	Date:	04-11-00
		Sheet:	1 of 1